

## **Excellent Integrated System Limited**

Stocking Distributor

Click to view price, real time Inventory, Delivery & Lifecycle Information:

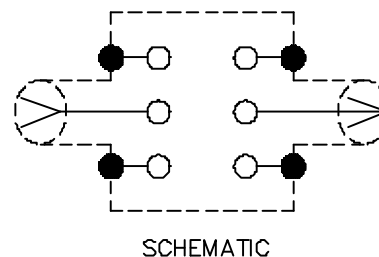
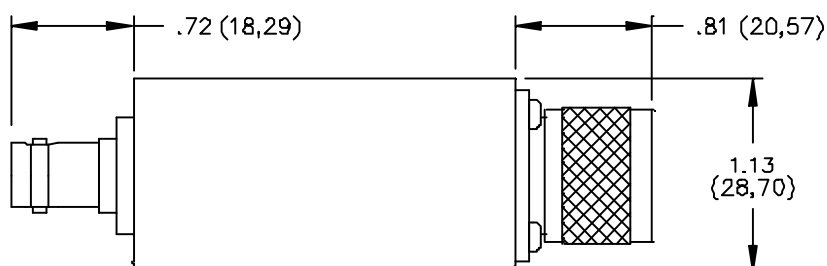
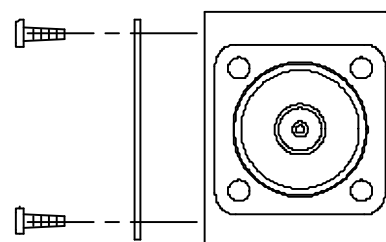
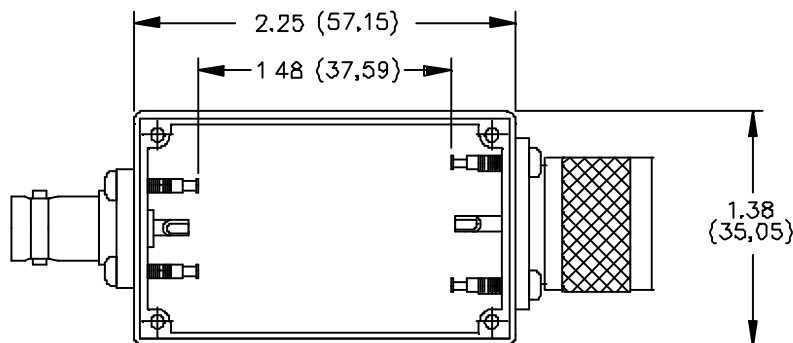
[Pomona Electronics](#)  
[2420](#)

For any questions, you can email us directly:

[sales@integrated-circuit.com](mailto:sales@integrated-circuit.com)

# Pomona®

## Model 2420 Size B Aluminum Box With Cover BNC Female To Type N Male



### MATERIALS:

Connector: BNC (M) & BNC (F)

Body: Tarnish Resistant Plating, Center Contact: Male – Gold Plated Brass, Female - Gold Plated Beryllium Copper, Solder Turret Terminal Screws: Steel

Shielded Housing: Die cast aluminum alloy A380 or A384.

Finish: Blue paint per Federal Standard 595 #25109 over Phosphoric Etch

Cover: .040 thick aluminum 1100-H14

Finish: Clear anodized

Marking: "Pomona 2420"

Screws: 4 each #2-32 x 1/4" Pan Head self-tapping. Steel.

### RATINGS:

Operating Voltage: Inner conductor/Shield: 500 VRMS Max.

Operating Temperature: -55°C to +150°C

Nominal Impedance: 50 Ohms

### ORDERING INFORMATION: Model 2420

All dimensions are in inches. Tolerances (except noted): .xx = ±.02" (.51 mm), .xxx = ±.005" (.127 mm).

All specifications are to the latest revisions. Specifications are subject to change without notice.

Registered trademarks are the property of their respective companies. Made in USA