

Excellent Integrated System Limited

Stocking Distributor

Click to view price, real time Inventory, Delivery & Lifecycle Information:

[Molex Connector Corporation](#)
[0353620250](#)

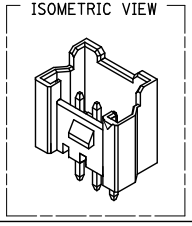
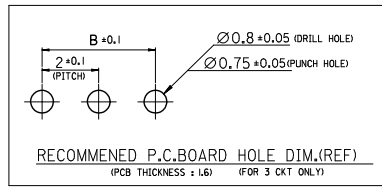
For any questions, you can email us directly:

sales@integrated-circuit.com

10 9 8 7 6 5 4 3 2 1

FOR 2 & 3 CKTS.

SECTION K-K'
ONLY 3 CKT



LEGEND

SD-35362-***	COLOR	0 : NATURAL
CTK NO.	1 : BLACK	2 : RED
	3 : YELLOW	4 : BLUE
	5 : GREEN	6 : TUBE PACKING (Natural Color)
	7 : TUBE PACKING (Red Color)	8 : TUBE PACKING (Blue Color)

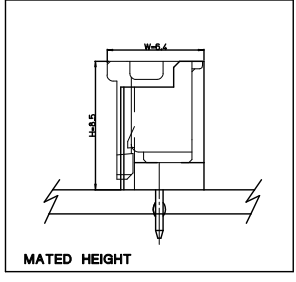
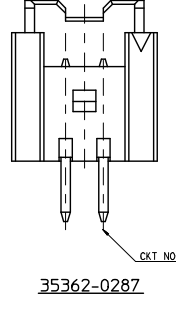
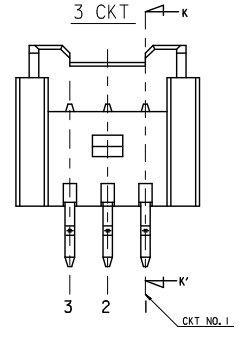
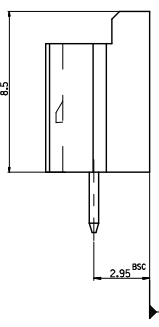
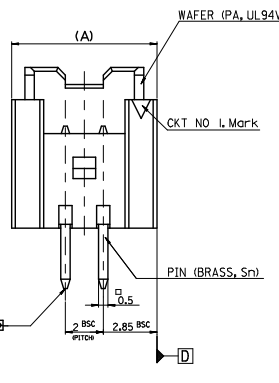
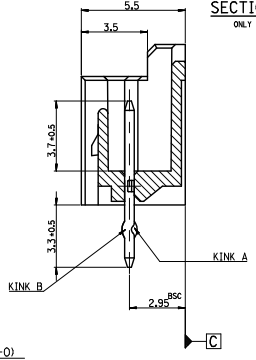
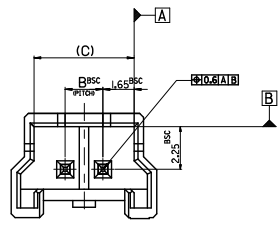
FINAL GOOD (BULK)	5 : SELECTIVE KINK (LEAD FREE)
	6 : NONE KINK (LEAD FREE)
SUB ASSY (TUBE)	7 : SELECTIVE KINK (LEAD FREE)
	8 : NONE KINK (LEAD FREE)

NOTES

- MATERIAL : UNFILLED POLYAMIDE, UL94V-0
PIN : BRASS
- FINISHES : PIN : Tin(Sn) 1-34um OVERALL
- PRODUCT SPECIFICATION : PS-35507-003
- MATING HOUSING : 35507-***0
MATING TERMINAL : 50212-8000
- KINK

CKT NO	1	2	3
2 CKT			
3 CKT	A	B	A

CKT NO	1	2
PRODUCT NO.	A	B
35362-0287		



LEAD FREE	
30 over	± 0.3
10 over 30 under	± 0.25
10 under	± 0.2
ANGLE	$\pm 3^\circ$
GENERAL TOLERANCE	

REVISED	EC NO: KOR2015-0019	2014/08/25
	DRMANKI M01	2014/08/26
	CHKD:SKIM	2014/09/03
	APPR:TSKIM02	

7.3	4	9.7	3536203**	35362-03**	3
5.3	2	7.7	3536202**	35362-02**	2
(C)	B	(A)	MATERIAL NO.	ENG. NO.	CKT

QUALITY SYMBOLS	GENERAL TOLERANCES (UNLESS SPECIFIED)		DIMENSION STYLE		SCALE	DESIGN UNITS	THIRD ANGLE PROJECTION
	mm	INCH	MM ONLY	DATE			
$\nabla=0$	4 PLACES	±---	±---	DRAWN BY	5:1	METRIC	2.0 W/B WAFER ASSY -LEAD FREE-
$\nabla=0$	3 PLACES	±---	±---	DATE			
$\nabla=0$	2 PLACES	±---	±---	CHECKED BY			
	1 PLACE	±---	±---	DATE			
	0 PLACE	±	±	APPROVED BY			
	ANGULAR ±---°		MATERIAL NO.		DOCUMENT NO.		SHEET NO.
	DRAFT WHERE APPLICABLE MUST REMAIN WITHIN DIMENSIONS		SEE TABLE		SD-35362-002		1 OF 1

molex

THIS DRAWING CONTAINS INFORMATION THAT IS PROPRIETARY TO MOLEX INCORPORATED AND SHOULD NOT BE USED WITHOUT WRITTEN PERMISSION

9 8 7 6 5 4 3 2 1