



Excellent Integrated System Limited

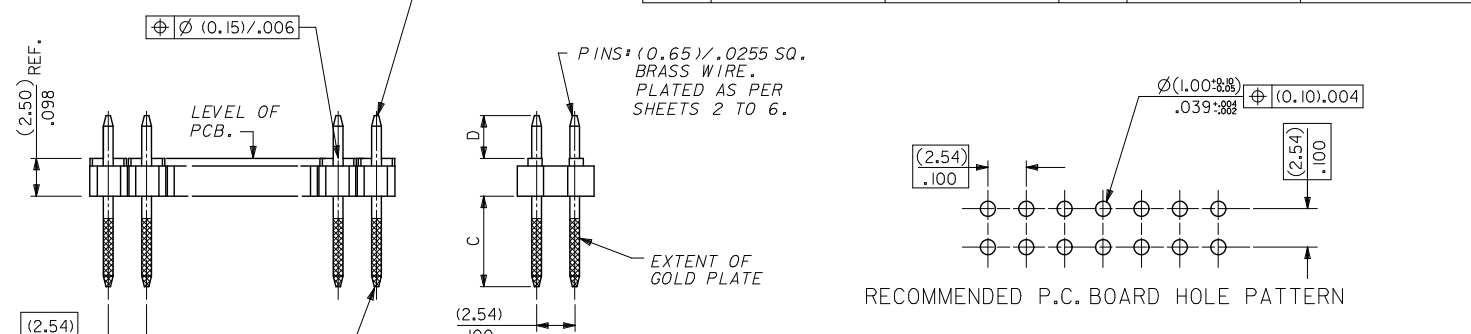
Stocking Distributor

Click to view price, real time Inventory, Delivery & Lifecycle Information:

[Molex Connector Corporation](#)
[0901310780](#)

For any questions, you can email us directly:
sales@integrated-circuit.com

10	9	8	7	6	5	4	3	2	1
<p>WAFER: 15% GLASS FILLED POLYESTER TO UL 94V-0. COLOUR: BLACK.</p>					CKT SIZE DIM. "A" DIM. "B" $(+0.20)$ (-0.08)	CKT SIZE DIM. "A" DIM. "B" $(+0.20)$ (-0.08)	CKT SIZE DIM. "A" DIM. "B" $(+0.20)$ (-0.08)	CKT SIZE DIM. "A" DIM. "B" $(+0.20)$ (-0.08)	CKT SIZE DIM. "A" DIM. "B" $(+0.20)$ (-0.08)
2X 1	(2.54)	.100	(2.54)	.100	2X21	(50.80)	2.000	(53.34)	2.100
2X 2	(2.54)	.100	(5.08)	.200	2X22	(53.34)	2.100	(55.88)	2.200
2X 3	(5.08)	.200	(7.62)	.300	2X23	(55.88)	2.200	(58.42)	2.300
2X 4	(7.62)	.300	(10.16)	.400	2X24	(58.42)	2.300	(60.96)	2.400
2X 5	(10.16)	.400	(12.70)	.500	2X25	(60.96)	2.400	(63.50)	2.500
2X 6	(12.70)	.500	(15.24)	.600	2X26	(63.50)	2.500	(66.04)	2.600
2X 7	(15.24)	.600	(17.78)	.700	2X27	(66.04)	2.600	(68.58)	2.700
2X 8	(17.78)	.700	(20.32)	.800	2X28	(68.58)	2.700	(71.12)	2.800
2X 9	(20.32)	.800	(22.86)	.900	2X29	(71.12)	2.800	(73.66)	2.900
2X10	(22.86)	.900	(25.40)	1.000	2X30	(73.66)	2.900	(76.20)	3.000
2X11	(25.40)	1.000	(27.94)	1.100	2X31	(76.20)	3.000	(78.74)	3.100
2X12	(27.94)	1.100	(30.48)	1.200	2X32	(78.74)	3.100	(81.28)	3.200
2X13	(30.48)	1.200	(33.02)	1.300	2X33	(81.28)	3.200	(83.82)	3.300
2X14	(33.02)	1.300	(35.56)	1.400	2X34	(83.82)	3.300	(86.36)	3.400
2X15	(35.56)	1.400	(38.10)	1.500	2X35	(86.36)	3.400	(88.90)	3.500
2X16	(38.10)	1.500	(40.64)	1.600	2X36	(88.90)	3.500	(91.44)	3.600
2X17	(40.64)	1.600	(43.18)	1.700	2X37	(91.44)	3.600	(93.98)	3.700
2X18	(43.18)	1.700	(45.72)	1.800	2X38	(93.98)	3.700	(96.52)	3.800
2X19	(45.72)	1.800	(48.26)	1.900	2X39	(96.52)	3.800	(99.06)	3.900
2X20	(48.26)	1.900	(50.80)	2.000	2X40	(99.06)	3.900	(101.60)	4.000



- NOTES
- PLEASE REFER TO SHT 2 FOR PLATING DETAILS.
 - PLEASE REFER TO SHT 3-8 FOR DIMENSIONS C & D.
 - RECOMMENDED PCB THICKNESS 1.60MM
 - PRODUCT SPECIFICATION: PS-99020-0001

CHANGE DOC. NO EC NO: S7012-0490 ODRINKATSEE 2011/12/21 CHYK-SKANG 2011/12/28 APPR: MLONG 2012/02/24	QUALITY SYMBOLS $\nabla=0$ $\nabla=0$ $\nabla=0$	GENERAL TOLERANCES (UNLESS SPECIFIED)		DIMENSION STYLE		SCALE	DESIGN UNITS	THIRD ANGLE PROJECTION	
		mm	INCH	MM ONLY		NTS	METRIC		
		4 PLACES ± ---	± ---	DRAWN BY	DATE	TITLE			
		3 PLACES ± ---	± ---	DB	1987/07/16	C GRID III DUAL ROW STRAIGHT PIN HEADER			
		2 PLACES ± 0.20	± ---	CHECKED BY	DATE	MOLEX INCORPORATED			
		1 PLACE ± ---	± ---	APPROVED BY	DATE	MOLEX INCORPORATED			
		ANGULAR ± 3°		MLONG	2012/02/24	MOLEX INCORPORATED			
		DRAFT WHERE APPLICABLE MUST REMAIN WITHIN DIMENSIONS		MATERIAL NO.		DOCUMENT NO.		SHEET NO.	
				SEE TABLE		SD-90131-001		1 OF 8	
				THIS DRAWING CONTAINS INFORMATION THAT IS PROPRIETARY TO MOLEX INCORPORATED AND SHOULD NOT BE USED WITHOUT WRITTEN PERMISSION					

10 9 8 7 6 5 4 3 2 1

PLATING OPTIONS	PLATING DESCRIPTION
A	3.00µm MIN TIN OVER 1.27µm NICKEL OVERALL
B	0.38µm MIN GOLD IN SELECTED AREA AND 3.00µm MIN TIN IN SELECTED AREA AND 1.30µm MIN NICKEL OVERALL
C	0.76µm MIN GOLD IN SELECTED AREA AND 3.00µm MIN TIN IN SELECTED AREA AND 1.30µm MIN NICKEL OVERALL
D	0.05-0.10µm GOLD FLASH IN SELECTED AREA AND 3.00µm MIN TIN IN SELECTED AREA AND 1.30µm MIN NICKEL OVERALL
E	0.38µm MIN GOLD IN SELECTED AREA (2 SIDES) AND 3.00µm MIN TIN IN SELECTED AREA AND 1.30µm MIN NICKEL OVERALL
F	0.76µm MIN GOLD IN SELECTED AREA (2 SIDES) AND 3.00µm MIN TIN IN SELECTED AREA AND 1.30µm MIN NICKEL OVERALL
G	0.05-0.10µm GOLD FLASH IN SELECTED AREA (2 SIDES) AND 3.00µm MIN TIN IN SELECTED AREA AND 1.30µm MIN NICKEL OVERALL

CHANGE DOC. NO EC NO: S2012-0490 DRAWN/SEE CHKD:SKANG APPR:MLONG O	2011/12/24 2011/12/28 2012/02/24	QUALITY SYMBOLS ∇=0 ∇=0 ∇=0	GENERAL TOLERANCES (UNLESS SPECIFIED) 4 PLACES ± --- ± --- 3 PLACES ± --- ± --- 2 PLACES ± 0.20 ± --- 1 PLACE ± --- ± --- ANGULAR ± 3 °	DIMENSION STYLE MM ONLY DRAWN BY DATE DB 1987/07/16 CHECKED BY DATE DB 1987/07/16 APPROVED BY DATE MLONG 2012/02/24	SCALE NTS DESIGN UNITS METRIC THIRD ANGLE PROJECTION	TITLE C GRID III DUAL ROW STRAIGHT PIN HEADER	MOLEX INCORPORATED	MATERIAL NO. SEE TABLE	DOCUMENT NO. SD-90131-001	SHEET NO. 2 OF 8											
											DRAFT WHERE APPLICABLE MUST REMAIN WITHIN DIMENSIONS										
											THIS DRAWING CONTAINS INFORMATION THAT IS PROPRIETARY TO MOLEX INCORPORATED AND SHOULD NOT BE USED WITHOUT WRITTEN PERMISSION										
											SIZE A3										

9 8 7 6 5 4 3 2 1

	10	9	8	7	6	5	4	3	2	1
	CIRCUIT SIZE	PLATING TYPE A PART NO.	PLATING TYPE E PART NO.	PLATING TYPE F PART NO.						
	2 X 1	90131-0121	90131-0761	90131-0921						
	2 X 2	-0122	-0762	-0922						
	2 X 3	-0123	-0763	-0923						
	2 X 4	-0124	-0764	-0924						
	2 X 5	-0125	-0765	-0925						
	2 X 6	-0126	-0766	-0926						
	2 X 7	-0127	-0767	-0927						
	2 X 8	-0128	-0768	-0928						
	2 X 9	-0129	-0769	-0929						
	2 X 10	-0130	-0770	-0930						
	2 X 11	-0131	-0771	-0931						
	2 X 12	-0132	-0772	-0932						
	2 X 13	-0133	-0773	-0933						
	2 X 14	-0134	-0774	-0934						
	2 X 15	-0135	-0775	-0935						
	2 X 16	-0136	-0776	-0936						
	2 X 17	-0137	-0777	-0937						
	2 X 18	-0138	-0778	-0938						
	2 X 19	-0139	-0779	-0939						
	2 X 20	-0140	-0780	-0940						
	2 X 21	-0141	-0781	-0941						
	2 X 22	-0142	-0782	-0942						
	2 X 23	-0143	-0783	-0943						
	2 X 24	-0144	-0784	-0944						
	2 X 25	-0145	-0785	-0945						
	2 X 26	-0146	-0786	-0946						
	2 X 27	-0147	-0787	-0947						
	2 X 28	-0148	-0788	-0948						
	2 X 29	-0149	-0789	-0949						
	2 X 30	-0150	-0790	-0950						
	2 X 31	-0151	-0791	-0951						
	2 X 32	-0152	-0792	-0952						
	2 X 33	-0153	-0793	-0953						
	2 X 34	-0154	-0794	-0954						
	2 X 35	-0155	-0795	-0955						
	2 X 36	-0156	-0796	-0956						
	2 X 37	-0157	-0797	-0957						
	2 X 38	-0158	-0798	-0958						
	2 X 39	-0159	-0799	-0959						
	2 X 40	90131-0160	90131-0800	90131-0960						

DIM C (+0.20 / ±.008) (6.75) .266

DIM D (+0.30 / ±.008) (2.90) .114

STANDARD PRODUCTS

CHANGE DOC. NO. EC. NO. S2012-0490 DRAWN BY: O CHKD: SKANG APPR: MLONG REV. DESCRIPTION	QUALITY SYMBOLS	GENERAL TOLERANCES (UNLESS SPECIFIED)	DIMENSION STYLE	SCALE	DESIGN UNITS	THIRD ANGLE PROJECTION
	$\sqrt{\text{---}}=0$ $\sqrt{\text{---}}=0$ $\sqrt{\text{---}}=0$	mm INCH 4 PLACES ± --- ± --- 3 PLACES ± --- ± --- 2 PLACES ± 0.20 ± --- 1 PLACE ± --- ± --- ANGULAR ± 3°	MM ONLY	NTS	METRIC	
		DRAFT WHERE APPLICABLE MUST REMAIN WITHIN DIMENSIONS	DRAWN BY: DB CHECKED BY: DB APPROVED BY: MLONG DATE: 1987/07/16 DATE: 1987/07/16 DATE: 2012/02/24	TITLE	C GRID III DUAL ROW STRAIGHT PIN HEADER	
			SEE TABLE	MATERIAL NO.	DOCUMENT NO.	SHEET NO.
						MOLEX INCORPORATED SD-90131-001 3 OF 8

10 9 8 7 6 5 4 3 2 1

CIRCUIT SIZE	PLATING TYPE A PART NO.	PLATING TYPE E PART NO.	PLATING TYPE F PART NO.
2 X 1	90131-0041	90131-0681	90131-0841
2 X 2	-0042	-0682	-0842
2 X 3	-0043	-0683	-0843
2 X 4	-0044	-0684	-0844
2 X 5	-0045	-0685	-0845
2 X 6	-0046	-0686	-0846
2 X 7	-0047	-0687	-0847
2 X 8	-0048	-0688	-0848
2 X 9	-0049	-0689	-0849
2 X 10	-0050	-0690	-0850
2 X 11	-0051	-0691	-0851
2 X 12	-0052	-0692	-0852
2 X 13	-0053	-0693	-0853
2 X 14	-0054	-0694	-0854
2 X 15	-0055	-0695	-0855
2 X 16	-0056	-0696	-0856
2 X 17	-0057	-0697	-0857
2 X 18	-0058	-0698	-0858
2 X 19	-0059	-0699	-0859
2 X 20	-0060	-0700	-0860
2 X 21	-0061	-0701	-0861
2 X 22	-0062	-0702	-0862
2 X 23	-0063	-0703	-0863
2 X 24	-0064	-0704	-0864
2 X 25	-0065	-0705	-0865
2 X 26	-0066	-0706	-0866
2 X 27	-0067	-0707	-0867
2 X 28	-0068	-0708	-0868
2 X 29	-0069	-0709	-0869
2 X 30	-0070	-0710	-0870
2 X 31	-0071	-0711	-0871
2 X 32	-0072	-0712	-0872
2 X 33	-0073	-0713	-0873
2 X 34	-0074	-0714	-0874
2 X 35	-0075	-0715	-0875
2 X 36	-0076	-0716	-0876
2 X 37	-0077	-0717	-0877
2 X 38	-0078	-0718	-0878
2 X 39	-0079	-0719	-0879
2 X 40	90131-0080	90131-0720	90131-0880

DIM C
(±0.20)
±.008
(5.75)
.226

DIM D
(±0.20)
±.008
(2.90)
.114

CIRCUIT SIZE	PLATING TYPE A PART NO.	PLATING TYPE E PART NO.	PLATING TYPE F PART NO.
2 X 1	90131-0081	90131-0721	90131-0881
2 X 2	-0082	-0722	-0882
2 X 3	-0083	-0723	-0883
2 X 4	-0084	-0724	-0884
2 X 5	-0085	-0725	-0885
2 X 6	-0086	-0726	-0886
2 X 7	-0087	-0727	-0887
2 X 8	-0088	-0728	-0888
2 X 9	-0089	-0729	-0889
2 X 10	-0090	-0730	-0890
2 X 11	-0091	-0731	-0891
2 X 12	-0092	-0732	-0892
2 X 13	-0093	-0733	-0893
2 X 14	-0094	-0734	-0894
2 X 15	-0095	-0735	-0895
2 X 16	-0096	-0736	-0896
2 X 17	-0097	-0737	-0897
2 X 18	-0098	-0738	-0898
2 X 19	-0099	-0739	-0899
2 X 20	-0100	-0740	-0900
2 X 21	-0101	-0741	-0901
2 X 22	-0102	-0742	-0902
2 X 23	-0103	-0743	-0903
2 X 24	-0104	-0744	-0904
2 X 25	-0105	-0745	-0905
2 X 26	-0106	-0746	-0906
2 X 27	-0107	-0747	-0907
2 X 28	-0108	-0748	-0908
2 X 29	-0109	-0749	-0909
2 X 30	-0110	-0750	-0910
2 X 31	-0111	-0751	-0911
2 X 32	-0112	-0752	-0912
2 X 33	-0113	-0753	-0913
2 X 34	-0114	-0754	-0914
2 X 35	-0115	-0755	-0915
2 X 36	-0116	-0756	-0916
2 X 37	-0117	-0757	-0917
2 X 38	-0118	-0758	-0918
2 X 39	-0119	-0759	-0919
2 X 40	90131-0120	90131-0760	90131-0920

DIM C
(±0.20)
±.008
(5.75)
.226

DIM D
(±0.20)
±.008
(4.50)
.177

NON-STANDARD PRODUCTS

CHANGE DOC. NO
EC NO. S2012-0490
DRAWN BY
CHKD:SKANG
APPR:MLONG

2011/12/21
2011/12/28
2012/02/24

QUALITY SYMBOLS
√=0
√=0
√=0

GENERAL TOLERANCES (UNLESS SPECIFIED)
mm INCH
4 PLACES ± --- ± ---
3 PLACES ± --- ± ---
2 PLACES ± 0.20 ± ---
1 PLACE ± --- ± ---
ANGULAR ± 3°

DIMENSION STYLE
MM ONLY
DRAWN BY DATE
CHECKED BY DATE
APPROVED BY DATE

SCALE NTS
DESIGN UNITS METRIC
THIRD ANGLE PROJECTION
C GRID III DUAL ROW STRAIGHT PIN HEADER
MOLEX INCORPORATED
MATERIAL NO. SEE TABLE
DOCUMENT NO. SD-90131-001
SHEET NO. 4 OF 8

9 8 7 6 5 4 3 2 1

10 9 8 7 6 5 4 3 2 1

CIRCUIT SIZE	PLATING TYPE A PART NO.	PLATING TYPE E PART NO.	PLATING TYPE F PART NO.
2 X 1	90131-0161	90131-0801	90131-0961
2 X 2	-0162	-0802	-0962
2 X 3	-0163	-0803	-0963
2 X 4	-0164	-0804	-0964
2 X 5	-0165	-0805	-0965
2 X 6	-0166	-0806	-0966
2 X 7	-0167	-0807	-0967
2 X 8	-0168	-0808	-0968
2 X 9	-0169	-0809	-0969
2 X 10	-0170	-0810	-0970
2 X 11	-0171	-0811	-0971
2 X 12	-0172	-0812	-0972
2 X 13	-0173	-0813	-0973
2 X 14	-0174	-0814	-0974
2 X 15	-0175	-0815	-0975
2 X 16	-0176	-0816	-0976
2 X 17	-0177	-0817	-0977
2 X 18	-0178	-0818	-0978
2 X 19	-0179	-0819	-0979
2 X 20	-0180	-0820	-0980
2 X 21	-0181	-0821	-0981
2 X 22	-0182	-0822	-0982
2 X 23	-0183	-0823	-0983
2 X 24	-0184	-0824	-0984
2 X 25	-0185	-0825	-0985
2 X 26	-0186	-0826	-0986
2 X 27	-0187	-0827	-0987
2 X 28	-0188	-0828	-0988
2 X 29	-0189	-0829	-0989
2 X 30	-0190	-0830	-0990
2 X 31	-0191	-0831	-0991
2 X 32	-0192	-0832	-0992
2 X 33	-0193	-0833	-0993
2 X 34	-0194	-0834	-0994
2 X 35	-0195	-0835	-0995
2 X 36	-0196	-0836	-0996
2 X 37	-0197	-0837	-0997
2 X 38	-0198	-0838	-0998
2 X 39	-0199	-0839	-0999
2 X 40	90131-0200	90131-0840	90131-1000

DIM C (±0.20) (±.008) (6.75) .266

DIM D (±0.25) (±.010) (4.50) .177

NON-STANDARD PRODUCTS

CHANGE DOC. NO EC NO. S2012-0490 DRAWN BY CHYK-SKANG APPR: MLONG 2011/12/27 2011/12/28 2012/02/24	QUALITY SYMBOLS √=0 √=0 √=0	GENERAL TOLERANCES (UNLESS SPECIFIED)		DIMENSION STYLE		SCALE	DESIGN UNITS	THIRD ANGLE PROJECTION
				MM ONLY		NTS	METRIC	
				DRAWN BY DATE		TITLE		
				CHECKED BY DATE		C GRID III DUAL ROW STRAIGHT PIN HEADER		
		APPROVED BY DATE		MATERIAL NO.		DOCUMENT NO.		SHEET NO.
		ANGULAR ± 3 °		MLONG		MOLEX INCORPORATED		5 OF 8
		DRAFT WHERE APPLICABLE MUST REMAIN WITHIN DIMENSIONS		SEE TABLE		SD-90131-001		
				SIZE A3		THIS DRAWING CONTAINS INFORMATION THAT IS PROPRIETARY TO MOLEX INCORPORATED AND SHOULD NOT BE USED WITHOUT WRITTEN PERMISSION		

9 8 7 6 5 4 3 2 1

	10	9	8	7	6	5	4	3	2	1
	CIRCUIT SIZE	PLATING TYPE B PART NO.	PLATING TYPE C PART NO.	PLATING TYPE D PART NO.	PLATING TYPE G PART NO.	CIRCUIT SIZE	PLATING TYPE B PART NO.	PLATING TYPE C PART NO.	PLATING TYPE D PART NO.	PLATING TYPE G PART NO.
	2 X 1	90131-0281	90131-0441	90131-0601	90131-1081	2 X 1	90131-0201	90131-0361	90131-0521	90131-1001
	2 X 2	-0282	-0442	-0602	-1082	2 X 2	-0202	-0362	-0522	-1002
	2 X 3	-0283	-0443	-0603	-1083	2 X 3	-0203	-0363	-0523	-1003
	2 X 4	-0284	-0444	-0604	-1084	2 X 4	-0204	-0364	-0524	-1004
	2 X 5	-0285	-0445	-0605	-1085	2 X 5	-0205	-0365	-0525	-1005
	2 X 6	-0286	-0446	-0606	-1086	2 X 6	-0206	-0366	-0526	-1006
	2 X 7	-0287	-0447	-0607	-1087	2 X 7	-0207	-0367	-0527	-1007
	2 X 8	-0288	-0448	-0608	-1088	2 X 8	-0208	-0368	-0528	-1008
	2 X 9	-0289	-0449	-0609	-1089	2 X 9	-0209	-0369	-0529	-1009
	2 X 10	-0290	-0450	-0610	-1090	2 X 10	-0210	-0370	-0530	-1010
	2 X 11	-0291	-0451	-0611	-1091	2 X 11	-0211	-0371	-0531	-1011
	2 X 12	-0292	-0452	-0612	-1092	2 X 12	-0212	-0372	-0532	-1012
	2 X 13	-0293	-0453	-0613	-1093	2 X 13	-0213	-0373	-0533	-1013
	2 X 14	-0294	-0454	-0614	-1094	2 X 14	-0214	-0374	-0534	-1014
	2 X 15	-0295	-0455	-0615	-1095	2 X 15	-0215	-0375	-0535	-1015
	2 X 16	-0296	-0456	-0616	-1096	2 X 16	-0216	-0376	-0536	-1016
	2 X 17	-0297	-0457	-0617	-1097	2 X 17	-0217	-0377	-0537	-1017
	2 X 18	-0298	-0458	-0618	-1098	2 X 18	-0218	-0378	-0538	-1018
	2 X 19	-0299	-0459	-0619	-1099	2 X 19	-0219	-0379	-0539	-1019
	2 X 20	-0300	-0460	-0620	-1100	2 X 20	-0220	-0380	-0540	-1020
	2 X 21	-0301	-0461	-0621	-1101	2 X 21	-0221	-0381	-0541	-1021
	2 X 22	-0302	-0462	-0622	-1102	2 X 22	-0222	-0382	-0542	-1022
	2 X 23	-0303	-0463	-0623	-1103	2 X 23	-0223	-0383	-0543	-1023
	2 X 24	-0304	-0464	-0624	-1104	2 X 24	-0224	-0384	-0544	-1024
	2 X 25	-0305	-0465	-0625	-1105	2 X 25	-0225	-0385	-0545	-1025
	2 X 26	-0306	-0466	-0626	-1106	2 X 26	-0226	-0386	-0546	-1026
	2 X 27	-0307	-0467	-0627	-1107	2 X 27	-0227	-0387	-0547	-1027
	2 X 28	-0308	-0468	-0628	-1108	2 X 28	-0228	-0388	-0548	-1028
	2 X 29	-0309	-0469	-0629	-1109	2 X 29	-0229	-0389	-0549	-1029
	2 X 30	-0310	-0470	-0630	-1110	2 X 30	-0230	-0390	-0550	-1030
	2 X 31	-0311	-0471	-0631	-1111	2 X 31	-0231	-0391	-0551	-1031
	2 X 32	-0312	-0472	-0632	-1112	2 X 32	-0232	-0392	-0552	-1032
	2 X 33	-0313	-0473	-0633	-1113	2 X 33	-0233	-0393	-0553	-1033
	2 X 34	-0314	-0474	-0634	-1114	2 X 34	-0234	-0394	-0554	-1034
	2 X 35	-0315	-0475	-0635	-1115	2 X 35	-0235	-0395	-0555	-1035
	2 X 36	-0316	-0476	-0636	-1116	2 X 36	-0236	-0396	-0556	-1036
	2 X 37	-0317	-0477	-0637	-1117	2 X 37	-0237	-0397	-0557	-1037
	2 X 38	-0318	-0478	-0638	-1118	2 X 38	-0238	-0398	-0558	-1038
	2 X 39	-0319	-0479	-0639	-1119	2 X 39	-0239	-0399	-0559	-1039
	2 X 40	90131-0320	90131-0480	90131-0640	90131-1120	2 X 40	90131-0240	90131-0400	90131-0560	90131-1040

DIM C (+0.20 / -0.08) ±.008 (6.75) .266

DIM D (+0.20 / -0.08) ±.012 (2.90) .114

DIM C (+0.20 / -0.08) ±.008 (5.75) .226

DIM D (+0.20 / -0.08) ±.012 (2.90) .114

**NON-STANDARD PRODUCTS
NOT FOR GENERAL RELEASE**

CHANGE DOC. NO	2011/12/21
EC NO. S2012-0490	
DRAWN BY	CHYKO-SKANG
DATE	2012/02/24
APPR. BY	MLONG
REV	

QUALITY SYMBOLS	DESCRIPTION
√=0	
∇=0	
∇=0	

GENERAL TOLERANCES (UNLESS SPECIFIED)	DIMENSION STYLE
mm	MM ONLY
INCH	
4 PLACES ±---	DRAWN BY
3 PLACES ±---	DATE
2 PLACES ±0.20	1987/07/16
1 PLACE ±---	CHECKED BY
	DATE
	1987/07/16
	APPROVED BY
	DATE
	2012/02/24
	MATERIAL NO.
	MLONG

SCALE	DESIGN UNITS	THIRD ANGLE PROJECTION
NTS	METRIC	
C GRID III DUAL ROW STRAIGHT PIN HEADER		
MOLEX INCORPORATED		
DOCUMENT NO.	SD-90131-001	
SHEET NO.	6 OF 8	

SEE TABLE

THIS DRAWING CONTAINS INFORMATION THAT IS PROPRIETARY TO MOLEX INCORPORATED AND SHOULD NOT BE USED WITHOUT WRITTEN PERMISSION

	10	9	8	7	6	5	4	3	2	1
	CIRCUIT SIZE	PLATING TYPE B PART NO.	PLATING TYPE C PART NO.	PLATING TYPE D PART NO.	PLATING TYPE G PART NO.	CIRCUIT SIZE	PLATING TYPE B PART NO.	PLATING TYPE C PART NO.	PLATING TYPE D PART NO.	PLATING TYPE G PART NO.
	2 X 1	90131-0241	90131-0401	90131-0561	90131-1041	2 X 1	90131-0321	90131-0481	90131-0641	90131-1121
	2 X 2	↑ -0242	↑ -0402	↑ -0562	↑ -1042	2 X 2	↑ -0322	↑ -0482	↑ -0642	↑ -1122
	2 X 3	-0243	-0403	-0563	-1043	2 X 3	-0323	-0483	-0643	-1123
	2 X 4	-0244	-0404	-0564	-1044	2 X 4	-0324	-0484	-0644	-1124
	2 X 5	-0245	-0405	-0565	-1045	2 X 5	-0325	-0485	-0645	-1125
	2 X 6	-0246	-0406	-0566	-1046	2 X 6	-0326	-0486	-0646	-1126
	2 X 7	-0247	-0407	-0567	-1047	2 X 7	-0327	-0487	-0647	-1127
	2 X 8	-0248	-0408	-0568	-1048	2 X 8	-0328	-0488	-0648	-1128
	2 X 9	-0249	-0409	-0569	-1049	2 X 9	-0329	-0489	-0649	-1129
	2 X 10	-0250	-0410	-0570	-1050	2 X 10	-0330	-0490	-0650	-1130
	2 X 11	-0251	-0411	-0571	-1051	2 X 11	-0331	-0491	-0651	-1131
	2 X 12	-0252	-0412	-0572	-1052	2 X 12	-0332	-0492	-0652	-1132
	2 X 13	-0253	-0413	-0573	-1053	2 X 13	-0333	-0493	-0653	-1133
	2 X 14	-0254	-0414	-0574	-1054	2 X 14	-0334	-0494	-0654	-1134
	2 X 15	-0255	-0415	-0575	-1055	2 X 15	-0335	-0495	-0655	-1135
	2 X 16	-0256	-0416	-0576	-1056	2 X 16	-0336	-0496	-0656	-1136
	2 X 17	-0257	-0417	-0577	-1057	2 X 17	-0337	-0497	-0657	-1137
	2 X 18	-0258	-0418	-0578	-1058	2 X 18	-0338	-0498	-0658	-1138
	2 X 19	-0259	-0419	-0579	-1059	2 X 19	-0339	-0499	-0659	-1139
	2 X 20	-0260	-0420	-0580	-1060	2 X 20	-0340	-0500	-0660	-1140
	2 X 21	-0261	-0421	-0581	-1061	2 X 21	-0341	-0501	-0661	-1141
	2 X 22	-0262	-0422	-0582	-1062	2 X 22	-0342	-0502	-0662	-1142
	2 X 23	-0263	-0423	-0583	-1063	2 X 23	-0343	-0503	-0663	-1143
	2 X 24	-0264	-0424	-0584	-1064	2 X 24	-0344	-0504	-0664	-1144
	2 X 25	-0265	-0425	-0585	-1065	2 X 25	-0345	-0505	-0665	-1145
	2 X 26	-0266	-0426	-0586	-1066	2 X 26	-0346	-0506	-0666	-1146
	2 X 27	-0267	-0427	-0587	-1067	2 X 27	-0347	-0507	-0667	-1147
	2 X 28	-0268	-0428	-0588	-1068	2 X 28	-0348	-0508	-0668	-1148
	2 X 29	-0269	-0429	-0589	-1069	2 X 29	-0349	-0509	-0669	-1149
	2 X 30	-0270	-0430	-0590	-1070	2 X 30	-0350	-0510	-0670	-1150
	2 X 31	-0271	-0431	-0591	-1071	2 X 31	-0351	-0511	-0671	-1151
	2 X 32	-0272	-0432	-0592	-1072	2 X 32	-0352	-0512	-0672	-1152
	2 X 33	-0273	-0433	-0593	-1073	2 X 33	-0353	-0513	-0673	-1153
	2 X 34	-0274	-0434	-0594	-1074	2 X 34	-0354	-0514	-0674	-1154
	2 X 35	-0275	-0435	-0595	-1075	2 X 35	-0355	-0515	-0675	-1155
	2 X 36	-0276	-0436	-0596	-1076	2 X 36	-0356	-0516	-0676	-1156
	2 X 37	-0277	-0437	-0597	-1077	2 X 37	-0357	-0517	-0677	-1157
	2 X 38	-0278	-0438	-0598	-1078	2 X 38	-0358	-0518	-0678	-1158
	2 X 39	-0279	-0439	-0599	-1079	2 X 39	-0359	-0519	-0679	-1159
	2 X 40	90131-0280	90131-0440	90131-0600	90131-1080	2 X 40	90131-0360	90131-0520	90131-0680	90131-1160

DIM C (±0.20) ±.008 (5.75) .226

DIM D (±0.25) ±.010 (4.50) .177

DIM C (±0.20) ±.008 (6.75) .266

DIM D (±0.25) ±.010 (4.50) .177

**NON-STANDARD PRODUCTS
NOT FOR GENERAL RELEASE**

CHANGE DOC. NO	2011/12/21	QUALITY SYMBOLS	GENERAL TOLERANCES (UNLESS SPECIFIED)
EC. NO. S:2012-0490	2011/12/28	▽=0	mm INCH
DRAWN/SEE	2012/02/24	▽=0	4 PLACES ± --- ± ---
CHKD:SKANG		▽=0	3 PLACES ± --- ± ---
APPR:MLONG		▽=0	2 PLACES ±0.20 ± ---
REV			1 PLACE ± --- ± ---
			ANGULAR ± 3°

DRAWN BY	DATE	TITLE
DB	1987/07/16	C GRID III DUAL ROW STRAIGHT PIN HEADER
CHECKED BY	DATE	
DB	1987/07/16	
APPROVED BY	DATE	
MLONG	2012/02/24	
MATERIAL NO.		
SEE TABLE		
DRAFT WHERE APPLICABLE MUST REMAIN WITHIN DIMENSIONS		

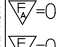
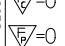


DIMENSION STYLE	SCALE	DESIGN UNITS	THIRD ANGLE PROJECTION
MM ONLY	NTS	METRIC	☉

MOLEX INCORPORATED	SD-90131-001	SHEET NO. 7 OF 8
THIS DRAWING CONTAINS INFORMATION THAT IS PROPRIETARY TO MOLEX INCORPORATED AND SHOULD NOT BE USED WITHOUT WRITTEN PERMISSION		

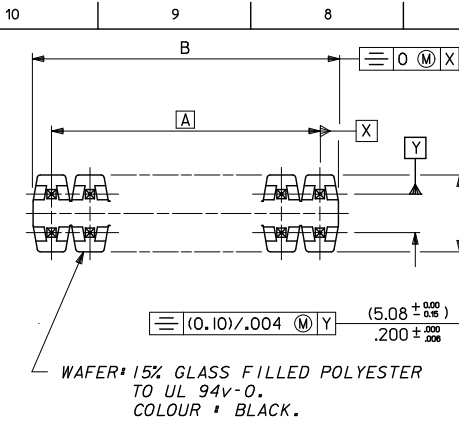
10 9 8 7 6 5 4 3 2 1

CIRCUIT SIZE	PLATING TYPE A PART NO.	PIN PART NUMBER	WAFER PART NUMBER	DIM C ^(±0.20) ±.008	DIM D ^(±0.38) ±.012
2 X 6	90131-3126	90129-2008	90131-0040	(14.60) .575	(2.38) .094
2 X 36	90131-3128	90129-2008	90131-0040	(14.60) .575	(2.38) .094
2 X 40	90131-3127	90129-2008	90131-0040	(14.60) .575	(2.38) .094

STANDARD PRODUCTS

CHANGE DOC. NO EC NO: S2012-0490 O DRWINATSEE 2011/12/24 CHYKDSKANG 2011/12/28 APPR: MLONG 2012/02/24	QUALITY SYMBOLS  = 0  = 0  = 0	GENERAL TOLERANCES (UNLESS SPECIFIED)		DIMENSION STYLE MM ONLY		SCALE NTS	DESIGN UNITS METRIC	 THIRD ANGLE PROJECTION
		4 PLACES ± --- ± ---	DRAWN BY DB DATE 1987/07/16	TITLE C GRID III DUAL ROW STRAIGHT PIN HEADER				
		3 PLACES ± --- ± ---	CHECKED BY DB DATE 1987/07/16	MOLEX INCORPORATED				
		2 PLACES ± 0.20 ± --- 1 PLACE ± --- ± --- ANGULAR ± 3 °	APPROVED BY MLONG DATE 2012/02/24	MATERIAL NO. SEE TABLE	DOCUMENT NO. SD-90131-001	SHEET NO. 8 OF 8		

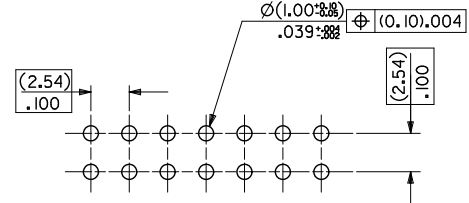
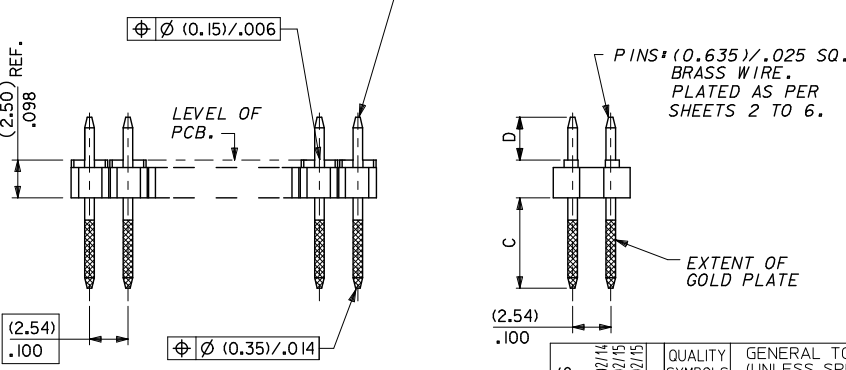
9 8 7 6 5 4 3 2 1



CKT SIZE	DIM. "A"		DIM. "B" $\begin{matrix} (+.20) \\ (-.008) \end{matrix}$		CKT SIZE	DIM. "A"		DIM. "B" $\begin{matrix} (+.20) \\ (-.008) \end{matrix}$	
2X 1			(2.54)	.100	2X21	(50.80)	2.000	(53.34)	2.100
2X 2	(2.54)	.100	(5.08)	.200	2X22	(53.34)	2.100	(55.88)	2.200
2X 3	(5.08)	.200	(7.62)	.300	2X23	(55.88)	2.200	(58.42)	2.300
2X 4	(7.62)	.300	(10.16)	.400	2X24	(58.42)	2.300	(60.96)	2.400
2X 5	(10.16)	.400	(12.70)	.500	2X25	(60.96)	2.400	(63.50)	2.500
2X 6	(12.70)	.500	(15.24)	.600	2X26	(63.50)	2.500	(66.04)	2.600
2X 7	(15.24)	.600	(17.78)	.700	2X27	(66.04)	2.600	(68.58)	2.700
2X 8	(17.78)	.700	(20.32)	.800	2X28	(68.58)	2.700	(71.12)	2.800
2X 9	(20.32)	.800	(22.86)	.900	2X29	(71.12)	2.800	(73.66)	2.900
2X10	(22.86)	.900	(25.40)	1.000	2X30	(73.66)	2.900	(76.20)	3.000
2X11	(25.40)	1.000	(27.94)	1.100	2X31	(76.20)	3.000	(78.74)	3.100
2X12	(27.94)	1.100	(30.48)	1.200	2X32	(78.74)	3.100	(81.28)	3.200
2X13	(30.48)	1.200	(33.02)	1.300	2X33	(81.28)	3.200	(83.82)	3.300
2X14	(33.02)	1.300	(35.56)	1.400	2X34	(83.82)	3.300	(86.36)	3.400
2X15	(35.56)	1.400	(38.10)	1.500	2X35	(86.36)	3.400	(88.90)	3.500
2X16	(38.10)	1.500	(40.64)	1.600	2X36	(88.90)	3.500	(91.44)	3.600
2X17	(40.64)	1.600	(43.18)	1.700	2X37	(91.44)	3.600	(93.98)	3.700
2X18	(43.18)	1.700	(45.72)	1.800	2X38	(93.98)	3.700	(96.52)	3.800
2X19	(45.72)	1.800	(48.26)	1.900	2X39	(96.52)	3.800	(99.06)	3.900
2X20	(48.26)	1.900	(50.80)	2.000	2X40	(99.06)	3.900	(101.60)	4.000

NOTES

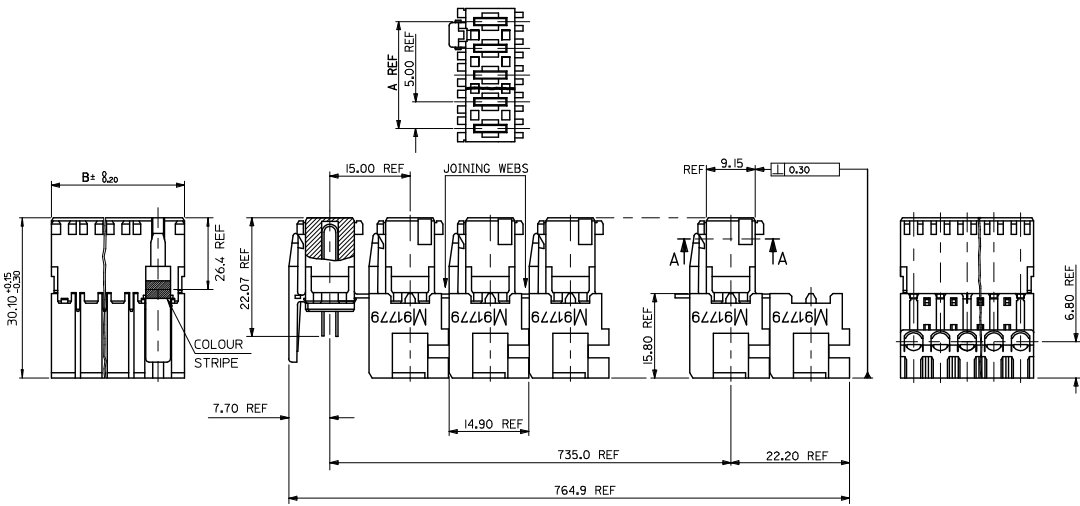
1. FOR ASSY NUMBERS WITH FINISH OPTIONS AND DIM'S C & D SEE SHEETS 2 TO 7.



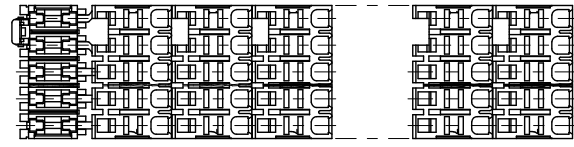
RECOMMENDED P.C. BOARD HOLE PATTERN

- NOTES
2. RECOMMENDED PCB THICKNESS 1.6MM
3. PRODUCT SPECIFICATION: PS-99020-0001

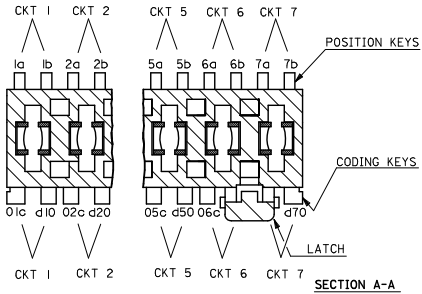
ADDED NOTES EC NO: E2008-0337 2008/02/14 DRAWN: K. FERMAN CHKD: 2008/02/15 APPR: BMAGUIRE 2008/02/15 REV DESCRIPTION	QUALITY SYMBOLS ▽ = ▽ =	GENERAL TOLERANCES (UNLESS SPECIFIED) <table border="1"> <tr><th></th><th>mm</th><th>INCH</th></tr> <tr><td>4 PLACES</td><td>± ---</td><td>± ---</td></tr> <tr><td>3 PLACES</td><td>± ---</td><td>± ---</td></tr> <tr><td>2 PLACES</td><td>± ---</td><td>± ---</td></tr> <tr><td>1 PLACE</td><td>± ---</td><td>± ---</td></tr> <tr><td colspan="3">ANGULAR ± ---°</td></tr> </table>		mm	INCH	4 PLACES	± ---	± ---	3 PLACES	± ---	± ---	2 PLACES	± ---	± ---	1 PLACE	± ---	± ---	ANGULAR ± ---°			DIMENSION STYLE MM ONLY DRAWN BY: DB DATE: 16/7/87 CHECKED BY: DATE: APPROVED BY: DATE:	SCALE: 4:1 DESIGN UNITS: METRIC THIRD ANGLE PROJECTION	TITLE: C GRID III DUAL ROW STRAIGHT PIN HEADER
		mm	INCH																				
	4 PLACES	± ---	± ---																				
	3 PLACES	± ---	± ---																				
2 PLACES	± ---	± ---																					
1 PLACE	± ---	± ---																					
ANGULAR ± ---°																							
DRAFT WHERE APPLICABLE MUST REMAIN WITHIN DIMENSIONS	MATERIAL NO. SEE CHART	MOLEX INCORPORATED	DOCUMENT NO. SDA-90131	SHEET NO. 1 OF 7																			
THIS DRAWING CONTAINS INFORMATION THAT IS PROPRIETARY TO MOLEX INCORPORATED AND SHOULD NOT BE USED WITHOUT WRITTEN PERMISSION																							



CKT SIZE	A	B
2	5.00	9.90
3	10.00	14.90
4	15.00	19.90



- NOTES
1. MATERIALS:
HOUSING: PA 6, UL94 V-2
COLOUR: SEE SHEET 2
TERMINAL: PHOSPHOR BRONZE, (0.50V.020 THICK REF
PLATING: 2 um/79 um MIN SILVER IN CONTACT AREA
(0.10 um/204 um MIN SILVER FLASH ALLOWER
 2. PRODUCT CONFORMS TO SPECIFICATION PS-99020-0037
 3. ACCEPTS CABLE, PER ES-99036-0010
 4. SEE SUBSEQUENT SHEETS FOR PART NUMBERS SHOWING THE VARIOUS CODING, KEYING AND LATCHING OPTIONS.
 5. PACKAGING SPECIFICATION PK-90833-001
 6. APPLICATION SPECIFICATION AS-99033-0004

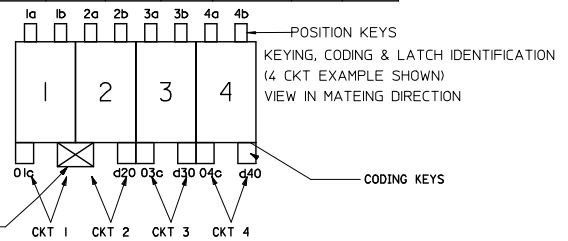


KEYING, CODING, & LATCH IDENTIFICATION
(7 CKT EXAMPLE SHOWN)

ADDED PART NUMBERS EC NO: IFC2014-1233 DRAWN: MONAHAN 2014/01/06 CHKD: APPR: STORIEFFEN 2014/01/20 REV:	QUALITY SYMBOLS ▽=0 ▽=0	GENERAL TOLERANCES (UNLESS SPECIFIED) mm INCH 4 PLACES ±--- ±--- 3 PLACES ±--- ±--- 2 PLACES ±0.05 ±--- 1 PLACE ±0.1 ±--- ANGULAR ±---°	DIMENSION STYLE MM ONLY	SCALE 1:1	DESIGN UNITS METRIC	THIRD ANGLE PROJECTION
	DRAFT WHERE APPLICABLE MUST REMAIN WITHIN DIMENSIONS	DRAWN BY: GMSWEEN 2004/10/14 CHECKED BY: BMAGUIRE 2005/01/07 APPROVED BY: BMAGUIRE 2010/10/20	MATERIAL NO. SEE FOLLOWING SHEETS	TITLE RAST 5 INDIRECT FEMALE ASSEMBLY 16 AMPS	MOLEX INCORPORATED	DOCUMENT NO. SD-91779-001

MOLEX PART NO.	HOUSING NO.	CIRCUIT SIZE	COLOUR	POSITION KEYS	CODING KEYS	LATCH POSITION	CONFIGURATION	COLOUR STRIP	REF.
91779-0001	91779-9001	2	NATURAL	1a, 1b, 2a, 2b	01c, d20	1/2		NONE	K00
91779-0002	91779-9001	2	NATURAL	1b, 2a	01c, d20	1/2		NONE	K01
91779-0003	91779-9001	2	NATURAL	1a, 2b	d20	1/2		NONE	K05
91779-0004	91779-9001	2	NATURAL	1a	01c, d20	1/2		NONE	K12
91779-0005	91779-9001	2	NATURAL	1a, 2b	01c, d20	1/2		BLUE	K48
91779-0006	91779-9004	2	RED	1a, 1b, 2a, 2b	NONE	1/2		NONE	K41
91779-0007	91779-9001	2	NATURAL	2a	01c	1/2		NONE	K42
91779-0008	91779-9004	2	RED	1a, 1b, 2a, 2b	d20	1/2		NONE	K34
91779-0009 PART NUMBER OBSOLETE, REPLACED WITH 91779-0006.									
91779-0010	91779-9003	2	BLACK	1a, 1b, 2a, 2b	NONE	1/2		NONE	K41
91779-0011	91779-9001	2	NATURAL	1a	d20	1/2		NONE	K66
91779-0012	91779-9001	2	NATURAL	1b	01c, d20	1/2		NONE	K16
91779-0013	91779-9001	2	NATURAL	1a	NONE	1/2		NONE	K70
91779-0014	91779-9001	2	NATURAL	1b, 2a, 2b	d20	1/2		NONE	K--
91779-0015	91779-9001	2	NATURAL	1a, 1b, 2a, 2b	d20	1/2		NONE	K34
91779-0016	91779-9001	2	NATURAL	1a, 1b, 2a, 2b	01c	1/2		NONE	K33
91779-0017	91779-9004	2	RED	1a, 1b, 2b	NONE	1/2		NONE	K43
91779-0018	91779-9001	2	NATURAL	1b, 2b	01c	1/2		NONE	K09
91779-0019	91779-9001	2	NATURAL	1b, 2b	01c	1/2		GREEN	K--
91779-0020	91779-9001	2	NATURAL	1a, 2b	d20	1/2		GREEN	K--
91779-0021	91779-9001	2	NATURAL	2a	01c, d20	1/2		BLACK	K--
91779-0022	91779-9001	2	NATURAL	1b	d20	1/2		RED	K--
91779-0023	91779-9001	2	NATURAL	1b, 2b	01c	1/2		BLUE	K--

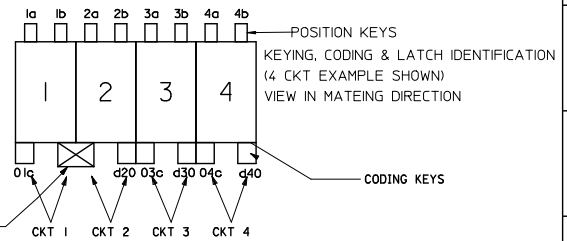
MOLEX PART NO.	HOUSING NO.	CIRCUIT SIZE	COLOUR	POSITION KEYS	CODING KEYS	LATCH POSITION	CONFIGURATION	COLOUR STRIP	REF.
91779-0024	91779-9001	2	NATURAL	1b, 2b	01c	1/2		ORANGE	K--
91779-0025	91779-9001	2	NATURAL	1a, 1b	d20	1/2		NONE	K--
91779-0026	91779-9001	2	NATURAL	1a, 2b	01c	1/2		NONE	K--
91779-0027	91779-9003	2	BLACK	1a, 2b	NONE	1/2		NONE	K06
91779-0028	91779-9004	2	RED	2a, 2b	NONE	1/2		NONE	K31
91779-0029	91779-9001	2	NATURAL	NONE	01c, d20	1/2		NONE	K--
91779-0030	91779-9001	2	NATURAL	1a, 2a, 2b	01c, d20	1/2		NONE	K62
91779-0031	91779-9001	2	NATURAL	1a, 2a	01c, d20	1/2		NONE	K--
91779-0032	91779-9001	2	NATURAL	1b, 2b	01c, d20	1/2		NONE	K--
91779-0033	91779-9001	2	NATURAL	1a, 1b, 2a, 2b	01c, d20	1/2		RED	K09
91779-0034	91779-9001	2	NATURAL	1a, 1b, 2a, 2b	01c, d20	1/2		GREEN	K--
91779-0035	91779-9001	2	NATURAL	2b	NONE	1/2		NONE	K--
91779-0036	91779-9001	2	NATURAL	1a, 1b, 2a, 2b	NONE	1/2		NONE	K41
91779-0038	91779-9001	2	NATURAL	1b	NONE	1/2		NONE	K--



SEE SHEET 1 IEC NO: JFG2014-1233 DRAWING NO: 2014/01/06 CHKD: DRIVINGMANN APPR: STORLEIN REV: 2014/01/20	QUALITY SYMBOLS	GENERAL TOLERANCES (UNLESS SPECIFIED)	DIMENSION STYLE	SCALE	DESIGN UNITS	THIRD ANGLE PROJECTION	
	▽=0	mm	MM ONLY	2:1	METRIC		
	▽=0	INCH					
		4 PLACES ±---		DRAWN BY	DATE	TITLE	
	3 PLACES ±---		GMC SWEEN	2004/10/14	RAST 5 INDIRECT FEMALE ASSEMBLY		
	2 PLACES ±0.05		CHECKED BY	DATE	16 AMPS		
	1 PLACE ±0.1		BMAGUIE	2005/01/07			
	ANGULAR ±---		APPROVED BY	DATE			
			BMAGUIE	2010/10/20			
	DRAFT WHERE APPLICABLE MUST REMAIN WITHIN DIMENSIONS		MATERIAL NO.	DOCUMENT NO.			
			SEE TABLES	SD-91779-001			
			SIZE				
			AZ				
			THIS DRAWING CONTAINS INFORMATION THAT IS PROPRIETARY TO MOLEX INCORPORATED AND SHOULD NOT BE USED WITHOUT WRITTEN PERMISSION				

13 12 11 10 9 8 7 6 5 4 3 2 1

CIRCUIT 2 CONTIN'D									
MOLEX PART NO.	HOUSING NO.	CIRCUIT SIZE	COLOUR	POSITION KEYS	CODING KEYS	LATCH POSITION	CONFIGURATION	COLOUR STRIPE	REF.
91779-0039	91779-9001	2	NATURAL	1a 2b	NONE	1/2		NONE	K06

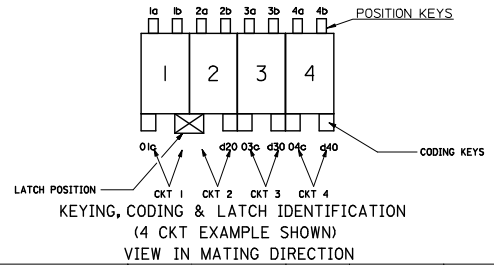


SEE SHEET 1 IEC NO: IFCG2014-1233 DRAWN BY: DR. MOHAMMAD CHKD: CHIKD: APPR: S. GRIFIN 2014/01/20 REV: AC	QUALITY SYMBOLS	GENERAL TOLERANCES (UNLESS SPECIFIED)	DIMENSION STYLE	SCALE	DESIGN UNITS	THIRD ANGLE PROJECTION
		mm INCH	MM ONLY	1:1	METRIC	
		4 PLACES ±---	DRAWN BY: GMC SWEEN DATE: 2004/10/14	TITLE: RAST 5 INDIRECT FEMALE ASSEMBLY 16 AMPS		
		3 PLACES ±---	CHECKED BY: BMAGUIRE DATE: 2005/01/07	MATERIAL NO. SEE TABLES		
	2 PLACES ±0.05	APPROVED BY: BMAGUIRE DATE: 2010/10/20	SIZE: A	SHEET NO. 3 OF 5		
	1 PLACE ±0.1		THIS DRAWING CONTAINS INFORMATION THAT IS PROPRIETARY TO MOLEX INCORPORATED AND SHOULD NOT BE USED WITHOUT WRITTEN PERMISSION			
	0 PLACE ±					

13 12 11 10 9 8 7 6 5 4 3 2 1

MOLEX PART NO.	HOUSING NO.	CIRCUIT SIZE	COLOUR	POSITION KEYS	CODING KEYS	LATCH POSITION	CONFIGURATION	COLOUR STRIP	REF.
91779-0101	91779-9101	3	NATURAL	1a 1b 2a 2b 3a 3b	01c d20 03c d30	1/2		NONE	K00
91779-0102	91779-9102	3	NATURAL	1a 1b 2a 2b 3a 3b	01c d10 02c d30	2/3		NONE	K90
91779-0103	91779-9101	3	NATURAL	1b	01c d20	1/2		NONE	K01
91779-0104	91779-9102	3	NATURAL	2a	d10 d30	2/3		NONE	K44
91779-0105	91779-9102	3	NATURAL	3b	02c d30	2/3		NONE	K--
91779-0106	91779-9101	3	NATURAL	NONE	NONE	1/2		NONE	K59
91779-0107	91779-9101	3	NATURAL	1b	01c d20	1/2		RED	K01
91779-0108	91779-9101	3	NATURAL	1a	01c d20	1/2		NONE	K154
91779-0109	91779-9103	3	RED	1a 1b 2a 2b 3a 3b	NONE	2/3		NONE	K39
91779-0110	91779-9103	3	RED	2b 3b	d10	2/3		NONE	K84
91779-0111	91779-9102	3	NATURAL	2b 3a	d10, d30	2/3		NONE	K--
91779-0112	PART NUMBER OBSOLETE. REPLACED WITH 91779-0109.								
91779-0113	91779-9103	3	RED	1a 1b 2a 2b 3a 3b	d10	2/3		NONE	K41
91779-0114	91779-9102	3	NATURAL	1a 1b 2a 2b 3a 3b	d10	2/3		NONE	K41
91779-0115	91779-9101	3	NATURAL	NONE	03C	1/2		NONE	K72
91779-0116	91779-9101	3	NATURAL	1a 1b	d30	1/2		NONE	K05
91779-0117	91779-9102	3	NATURAL	2a	d10 02c d30	2/3		NONE	K--
91779-0118	91779-9102	3	NATURAL	2a	d10	2/3		NONE	K--
91779-0119	91779-9101	3	NATURAL	2a	01c d30	1/2		NONE	K--

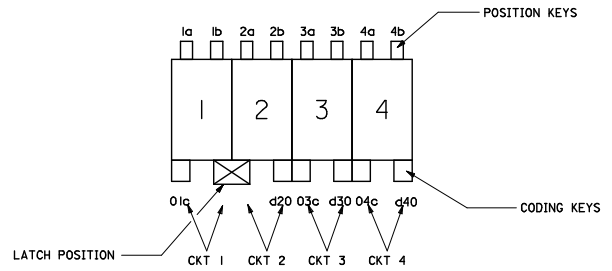
MOLEX PART NO.	HOUSING NO.	CIRCUIT SIZE	COLOUR	VOID CIRCUIT	POSITION KEYS	CODING KEYS	LATCH POSITION	CONFIGURATION	COLOUR STRIP	REF.
91779-0120	91779-9102	3	NATURAL	NONE	2b 3b	d30	2/3		NONE	K--
91779-0121	91779-9101	3	NATURAL	NONE	NONE	01c d30	1/2		NONE	K--
91779-0122	91779-9103	3	RED	NONE	1b 2a 2b 3b	NONE	2/3		NONE	K124
91779-0123	91779-9103	3	RED	2	2b 3b	d10	2/3		NONE	K84
91779-0124	91779-9102	3	NATURAL	NONE	NONE	d10 02c d30	2/3		NONE	K--
91779-0126	91779-9101	3	NATURAL	NONE	3b	01c d30	1/2		NONE	K--
91779-0127	91779-9102	3	NATURAL	NONE	1a 2a 3b	d10 d30	2/3		NONE	K170
91779-0128	91779-9102	3	NATURAL	NONE	1a 2b	NONE	2/3		NONE	K--
91779-0129	91779-9102	3	NATURAL	NONE	1a 1b 2a 2b 3a 3b	01c d30	2/3		NONE	K--
91779-0130	91779-9101	3	NATURAL	NONE	1a 3b	01c	1/2		NONE	K--



SEE SHEET 1 IEC NO: IFC2014-1233 DRAWING NO: 2014/0106 CHKD: CHIKD APPR: STURFFEN 2014/01/20	QUALITY SYMBOLS	GENERAL TOLERANCES (UNLESS SPECIFIED)	DIMENSION STYLE	SCALE	DESIGN UNITS	THIRD ANGLE PROJECTION
	▽=0	mm	MM ONLY	2:1	METRIC	
	▽=0	INCH				
		4 PLACES ±--- ±---	DRAWN BY	DATE	TITLE	RAST 5 INDIRECT FEMALE ASSEMBLY 16 AMPS MOLEX INCORPORATED
	3 PLACES ±--- ±---	GMC SWEEN	2004/10/14			
	2 PLACES ±0.05 ±---	CHECKED BY	DATE			
	1 PLACE ±0.1 ±---	BMAGUIE	2005/01/07			
	ANGULAR ±---°	APPROVED BY	DATE			
		BMAGUIE	2010/10/20			
	DRAFT WHERE APPLICABLE MUST REMAIN WITHIN DIMENSIONS	MATERIAL NO.	SEE TABLES	DOCUMENT NO.	SD-91779-001	
		SIZE	THIS DRAWING CONTAINS INFORMATION THAT IS PROPRIETARY TO MOLEX INCORPORATED AND SHOULD NOT BE USED WITHOUT WRITTEN PERMISSION		SHEET NO. 4 OF 5	

MOLEX PART NO.	HOUSING NO.	CIRCUIT SIZE	COLOUR	POSITION KEYS	CODING KEYS	LATCH POSITION	CONFIGURATION	COLOUR STRIP	REF.
91779-0201	91779-9201	4	NATURAL	1a 1b 2a 2b 3a 3b 4a 4b	01c d20 03c d40	1/2, 3/4		NONE	K00
91779-0202	91779-9201	4	NATURAL	1b	03c d40	1/2, 3/4		NONE	K01
91779-0203	91779-9201	4	NATURAL	1a 3a 3b	01c d20 d40	1/2, 3/4		NONE	K32
91779-0204	91779-9202	4	NATURAL	NONE	d20	1/2		NONE	K127
91779-0205	91779-9201	4	NATURAL	2a, 4b	d20	1/2, 3/4		NONE	K--
91779-0206	91779-9201	4	NATURAL	2b	d20	1/2, 3/4		NONE	K--
91779-0207	91779-9207	4	NATURAL	3a	01c d20 03c d40	3/4		NONE	K--
91779-0208	91779-9201	4	NATURAL	3a	01c d20 03c d40	1/2 3/4		NONE	K--
91779-0209	91779-9208	4	NATURAL	1a 2b 3b 4b	01c d10 02c d30 04c d40	2/3		NONE	K--
91779-0210	91779-9201	4	NATURAL	1a 1b 2b 3a 3b 4b	d20 d40	1/2 3/4		NONE	K--
91779-0211	91779-9201	4	NATURAL	2a 2b 3b 4b	01c d20 03c d40	1/2 3/4		NONE	K--
91779-0212	91779-9201	4	NATURAL	2a 3a 4b	01c	1/2 3/4		NONE	K--
91779-0213	91779-9202	4	NATURAL	2a 4b	01c d30	1/2		NONE	K--
91779-0214	91779-9202	4	NATURAL	1a 1b 2a 2b 3a 3b 4a 4b	01c d20 03c d30 04c d40	1/2		NONE	K--
91779-0215	91779-9201	4	NATURAL	1a 2b 3b	d40	1/2 3/4		NONE	K--

MOLEX PART NO.	HOUSING NO.	CIRCUIT SIZE	COLOUR	POSITION KEYS	CODING KEYS	LATCH POSITION	CONFIGURATION	COLOUR STRIP	REF.
91779-0216	91779-9201	4	NATURAL	1b 2a 3a 4b	01c d40	1/2, 3/4		NONE	K--
91779-0217 PART NUMBER OBSOLETE. REPLACED WITH 91779-0205									
91779-0218	91779-9201	4	NATURAL	1a 1b 3a 3b	03c d40	1/2, 3/4		NONE	K--
91779-0219	91779-9201	4	NATURAL	1b 2a 3a 4a	01c d20 03c	1/2, 3/4		NONE	K--



KEYING, CODING & LATCH IDENTIFICATION
(4 CKT EXAMPLE SHOWN)
VIEW IN MATING DIRECTION

SEE SHEET 1 IEC NO: IFC2014-1233 DRAWN: MAMHAN CHKD: APPR: STORLEIN REV:	QUALITY SYMBOLS ▽=0 ▽=0	GENERAL TOLERANCES (UNLESS SPECIFIED) <table border="1"> <tr> <th></th> <th>mm</th> <th>INCH</th> </tr> <tr> <td>4 PLACES</td> <td>±---</td> <td>±---</td> </tr> <tr> <td>3 PLACES</td> <td>±---</td> <td>±---</td> </tr> <tr> <td>2 PLACES</td> <td>±0.05</td> <td>±---</td> </tr> <tr> <td>1 PLACE</td> <td>±0.1</td> <td>±---</td> </tr> <tr> <td colspan="3">ANGULAR ±---</td> </tr> </table>		mm	INCH	4 PLACES	±---	±---	3 PLACES	±---	±---	2 PLACES	±0.05	±---	1 PLACE	±0.1	±---	ANGULAR ±---			DIMENSION STYLE MM ONLY	SCALE 2:1	DESIGN UNITS METRIC	THIRD ANGLE PROJECTION
		mm	INCH																					
4 PLACES	±---	±---																						
3 PLACES	±---	±---																						
2 PLACES	±0.05	±---																						
1 PLACE	±0.1	±---																						
ANGULAR ±---																								
DRAFT WHERE APPLICABLE MUST REMAIN WITHIN DIMENSIONS	DRAWN BY GMSWEN CHECKED BY BMAGUIRE APPROVED BY BMAGUIRE DATE 2004/10/14 2005/01/07 2010/10/20	TITLE RAST 5 INDIRECT FEMALE ASSEMBLY 16 AMPS	MATERIAL NO. SEE TABLES	DOCUMENT NO. SD-91779-001	SHEET NO. 5 OF 5	THIS DRAWING CONTAINS INFORMATION THAT IS PROPRIETARY TO MOLEX INCORPORATED AND SHOULD NOT BE USED WITHOUT WRITTEN PERMISSION																		