

## **Excellent Integrated System Limited**

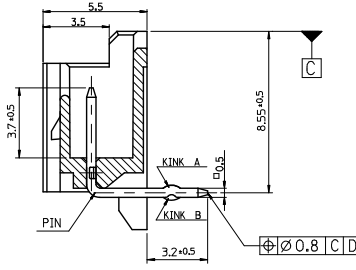
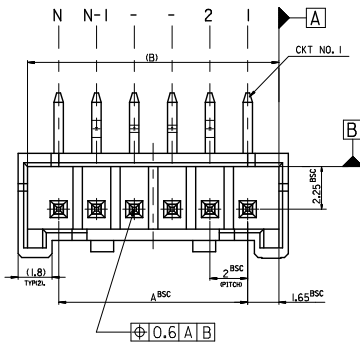
Stocking Distributor

Click to view price, real time Inventory, Delivery & Lifecycle Information:

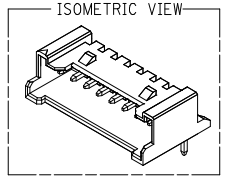
[Molex Connector Corporation](#)  
[35363-2060](#)

For any questions, you can email us directly:  
[sales@integrated-circuit.com](mailto:sales@integrated-circuit.com)

10 9 8 7 6 5 4 3 2 1



**LEAD FREE**

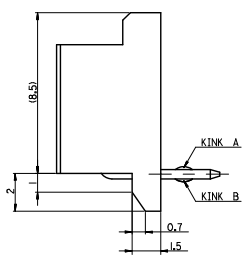
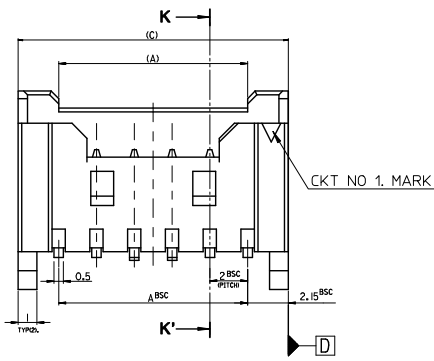
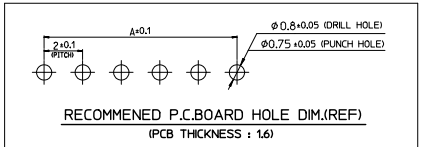


**LEGEND**

SD-35363-\*\*\* 6 \* COLOR

- 0 : NATURAL
- 1 : BLACK
- 2 : RED
- 3 : YELLOW
- 4 : BLUE
- 5 : GREEN

CTKT NO. \_\_\_\_\_ LEAD FREE



32.3	31.3	28	156*	- 156*	15
30.3	29.3	26	146*	- 146*	14
28.3	27.3	24	136*	- 136*	13
26.3	25.3	22	126*	- 126*	12
24.3	23.3	20	116*	- 116*	11
22.3	21.3	18	106*	- 106*	10
20.3	19.3	16	096*	- 096*	9
18.3	17.3	14	086*	- 086*	8
16.3	15.3	12	076*	- 076*	7
14.3	13.3	10	066*	- 066*	6
12.3	11.3	8	056*	- 056*	5
10.3	9.3	6	35363046*	35363-046*	4
(C)	(B)	A	MATERIAL NO.	ENG. NO.	CKT

- NOTES**
- MATERIAL : WAFER - UNFILLED POLYAMIDE, UL94V-0  
PIN - BRASS
  - FINISHES : PIN - Tin(Sn) 1 ~ 3 MICROMETER OVERALL
  - PRODUCT SPECIFICATION : PS-35507-003
  - MATES WITH : HOUSING - 35507-\*\*\*0\*  
TERMINAL - 50212-8000

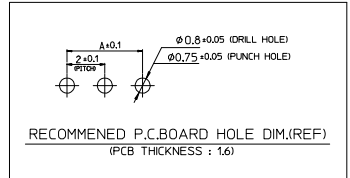
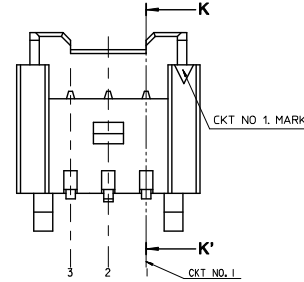
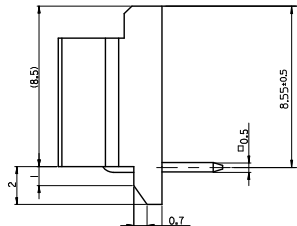
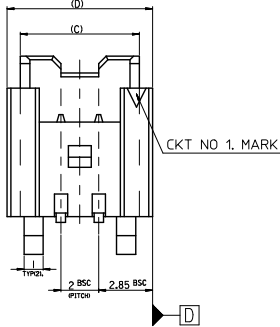
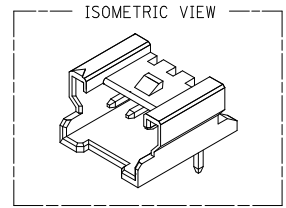
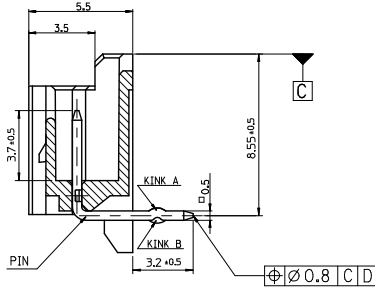
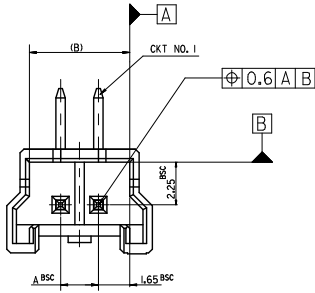
CKT	1	2	3	4	N-2	N-1	N
6 CKT OVER	-	A	B	-	-	B	A
5 CKT	A	B	-	B	A		
4 CKT	A	B	B	A			

30 over	±0.3
10 over 30 under	±0.25
10 under	±0.2
ANGLE	±3°
GENERAL TOLERANCE	

<b>REVISED</b> EC NO: KOR2015-0019 DRW:YKIM01 2014/08/25 CHK:SKIM 2014/08/26 APPR:YSKIM02 2014/09/03	QUALITY SYMBOLS ∇=0 ∇=0 ∇=0 ∇=0	GENERAL TOLERANCES (UNLESS SPECIFIED) mm INCH 4 PLACES ± --- ± --- 3 PLACES ± --- ± --- 2 PLACES ± --- ± --- 1 PLACE ± --- ± --- 0 PLACE ± ± ANGULAR ± --- ° DRAFT WHERE APPLICABLE MUST REMAIN WITHIN DIMENSIONS	DIMENSION STYLE MM ONLY DRAWN BY YSOKIM DATE 1996/09/11 CHECKED BY JKOH DATE 1996/09/11 APPROVED BY _____ DATE _____	SCALE 5:1	DESIGN UNITS METRIC	THIRD ANGLE PROJECTION
				TITLE 2.0 W/B WAFER R/A ASSY -LEAD FREE-		
				MATERIAL NO. SEE TABLE DOCUMENT NO. SD-35363-002		
				SHEET NO. 1 OF 1		

9 8 7 6 5 4 3 2 1

FOR 2 & 3 CKTS. LEAD FREE



**LEGEND**

SD-35363-\*\*\* 6  $\pm$  COLOR

- 0 : NATURAL
- 1 : BLACK
- 2 : RED
- 3 : YELLOW
- 4 : BLUE
- 5 : GREEN

- NOTES**
1. MATERIAL : WAFER - UNFILLED POLYAMIDE, UL94V-0  
PIN - BRASS
  2. FINISHES : PIN - Tin(Sn) 1 ~ 3 MICROMETER OVERALL
  3. PRODUCT SPECIFICATION : PS-35507-003
  4. MATES WITH : HOUSING - 35507-\*\*\*0\*  
TERMINAL - 50212-8000

5. KINK

CKT	CKT NO	1	2	3
2 CKT	NONE	KINK		
3 CKT	A	B	A	

30 over	$\pm 0.3$
10 over 30 under	$\pm 0.25$
10 under	$\pm 0.2$
ANGLE	$\pm 3^\circ$
GENERAL TOLERANCE	

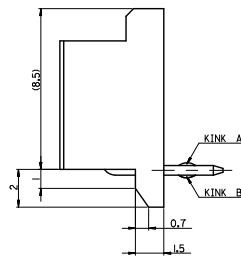
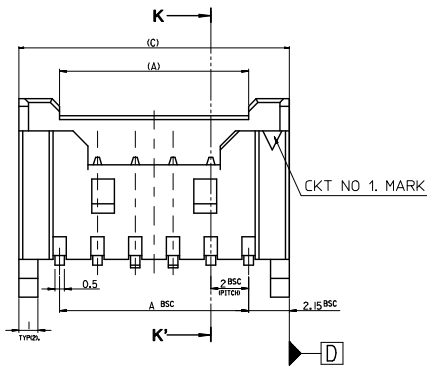
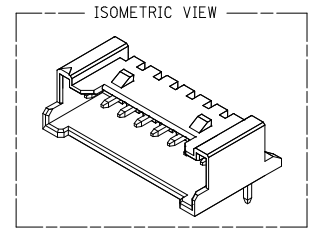
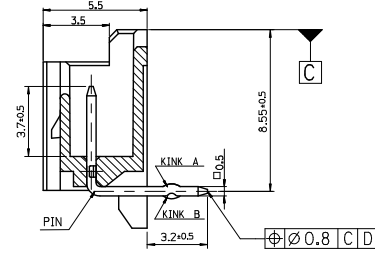
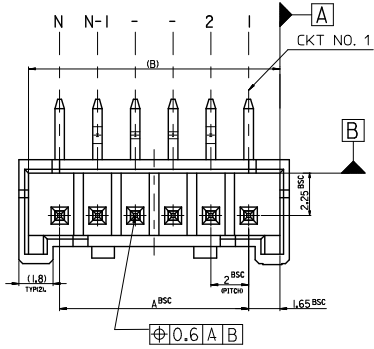
REVISED  
EC NO: KOR2015-0019  
DRAWN: KIM 2014/08/25  
CHKD: SKI 2014/08/26  
APPR: SKI 2014/09/03

QUALITY SYMBOLS	GENERAL TOLERANCES (UNLESS SPECIFIED)	
	mm	INCH
$\nabla=0$	4 PLACES $\pm$ ---	$\pm$ ---
$\nabla=0$	3 PLACES $\pm$ ---	$\pm$ ---
$\nabla=0$	2 PLACES $\pm$ ---	$\pm$ ---
$\nabla=0$	1 PLACE $\pm$ ---	$\pm$ ---
$\nabla=0$	0 PLACE $\pm$	$\pm$
	ANGULAR $\pm$ ---	

DRAFT WHERE APPLICABLE MUST REMAIN WITHIN DIMENSIONS

9.7	8.3	7.3	4	35363036*	35363-036*	3
7.7	6.3	5.3	2	35363026*	35363-026*	2
(D)	(C)	(B)	A	MATERIAL NO.	ENG. NO.	CKT
DIMENSION STYLE			SCALE	DESIGN UNITS	THIRD ANGLE PROJECTION	
MM ONLY			5:1	METRIC		
DRAWN BY			DATE	TITLE		
YSOOKIM			1996/09/11	2.0 W/B WAFER R/A ASSY		
CHECKED BY			DATE	-LEAD FREE-		
JKOH			1996/09/11			
APPROVED BY			DATE			
MATERIAL NO.			DOCUMENT NO.	SHEET NO.		
SEE TABLE			SD-35363-002	1 OF 1		
THIS DRAWING CONTAINS INFORMATION THAT IS PROPRIETARY TO MOLEX INCORPORATED AND SHOULD NOT BE USED WITHOUT WRITTEN PERMISSION						

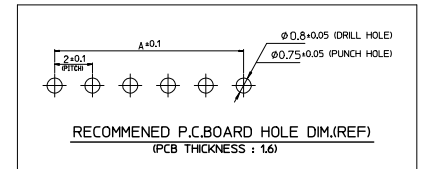
LEAD FREE



**LEGEND**

SD-35363-\*\*-\*\* 6 \* COLOR

- 0 : NATURAL
- 1 : BLACK
- 2 : RED
- 3 : YELLOW
- 4 : BLUE
- 5 : GREEN



**NOTES**

- MATERIAL : WAFER - UNFILLED POLYAMIDE, UL94V-0  
PIN - BRASS
- FINISHES : PIN - Tin(Sn) 1 ~ 3 MICROMETER OVERALL
- PRODUCT SPECIFICATION : PS-35507-003
- MATES WITH : HOUSING - 35507-\*\*-0\*  
TERMINAL - 50212-8000
- KINK

CKT NO	1	2	3	4	N-3	N-2	N-1	N
20	-	A	B	-	-	B	A	-

30 over	±0.3
10 over 30 under	±0.25
10 under	±0.2
ANGLE	±3°
GENERAL TOLERANCE	

REV	DESCRIPTION	DATE
REVISD	EC NO: KOR2015-0019	2014/08/25
D	DRW:KTKI.M01	2014/08/26
	CHK:KSKIM	2014/08/26
	APP:YSKIM02	2014/09/03

QUALITY SYMBOLS	GENERAL TOLERANCES (UNLESS SPECIFIED)	
	mm	INCH
▽=0	4 PLACES ±---	±---
▽=0	3 PLACES ±---	±---
▽=0	2 PLACES ±---	±---
▽=0	1 PLACE ±---	±---
▽=0	0 PLACE ±	±
	ANGULAR ±---°	

DRAFT WHERE APPLICABLE MUST REMAIN WITHIN DIMENSIONS

42.3	41.3	38	35363206*	35363-206*	20
(C)	(B)	A	MATERIAL NO.	ENG. NO.	CKT
DIMENSION STYLE		SCALE	DESIGN UNITS	THIRD ANGLE PROJECTION	
MM ONLY		5:1	METRIC		
DRAWN BY			DATE	TITLE	
YSOOKIM			1998/04/23	2.0 W/B WAFER R/A ASS'Y	
CHECKED BY			DATE	-LEAD FREE-	
JKOH			1998/04/23		
APPROVED BY			DATE		
MATERIAL NO.			DOCUMENT NO.	SHEET NO.	
SEE TABLE			SD-35363-002	1 OF 1	
THIS DRAWING CONTAINS INFORMATION THAT IS PROPRIETARY TO MOLEX INCORPORATED AND SHOULD NOT BE USED WITHOUT WRITTEN PERMISSION					