

Excellent Integrated System Limited

Stocking Distributor

Click to view price, real time Inventory, Delivery & Lifecycle Information:

[EPCOS \(TDK\)](#)
[B39311R2710U310](#)

For any questions, you can email us directly:

sales@integrated-circuit.com



SAW Components

Data Sheet R 2710

Data Sheet

A large, stylized, 3D-rendered graphic of the word "EPCOS" in white, set against a dark, abstract background. The letters are thick and have a slight shadow, giving them a three-dimensional appearance. The background features a faint, glowing globe and some abstract, curved lines.



SAW Components	R 2710
Resonator	311,063 MHz

Data Sheet

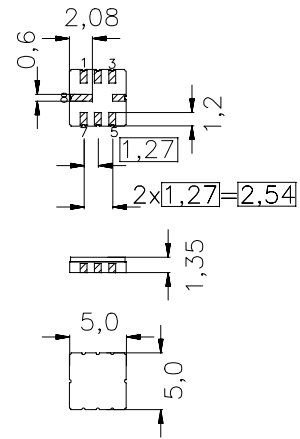
SMD Ceramic package **QCC8C**

Features

- 2-port resonator
- nominal 180°-phase at resonance
- Provides reliable, fundamental mode, quartz frequency stabilization i.e. in transmitters or local oscillators

Terminals

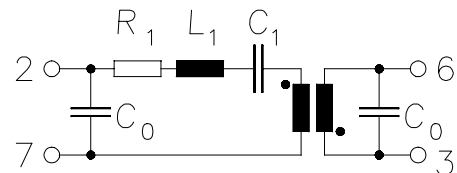
- Ni, gold plated



Dimensions in mm, approx. weight 0,1 g

Pin configuration

- | | |
|-----|-------------------------|
| 2 | Input / Output |
| 6 | Output / Input |
| 7 | Ground (Input / Output) |
| 3 | Ground (Output / Input) |
| 4,8 | Ground (case) |



Type	Ordering code	Marking and Package according to	Packing according to
R 2710	B39311-R2710-U310	C61157-A7-A56	F61074-V8070-Z000

Electrostatic Sensitive Device (ESD)

Maximum ratings

Operable temperature range	T_A	-45/+85	°C	between any terminals
Storage temperature range	T_{stg}	-45/+85	°C	
DC voltage	V_{DC}	12	V	
Source power	P_s	0	dBm	



SAW Components	R 2710
Resonator	311,063 MHz

Data Sheet

Characteristics

Reference temperature: $T_A = 25\text{ °C}$
 Terminating Source impedance: $Z_S = 50\ \Omega$
 Terminating Load impedance: $Z_L = 50\ \Omega$

		min.	typ.	max.	
Center frequency (center frequency between 3 dB points)	f_c	310,988	311,063	311,138	MHz
Minimum insertion attenuation	α_{\min}	—	8,7	10,7	dB
Phase at f_c	φ	—	158	—	° el.
Loaded quality factor	Q_L	4200	7000	—	
Unloaded quality factor	Q_U	6000	10800	—	
Ageing of f_c		—	—	±50	ppm
Equivalent circuit elements					
Motional capacitance	C_1	—	0,284	—	fF
Motional inductance	L_1	—	922	—	μH
Motional resistance	R_1	—	160	—	Ω
Input / Output capacitance	C_0	—	1,8	—	pF
Temperature coefficient of frequency ¹⁾	TC_f	—	-0,03	—	ppm/K ²
Turnover temperature	T_0	10	—	40	°C

¹⁾ Temperature dependence of f_c : $f_c(T_A) = f_c(T_0)(1 + TC_f(T_A - T_0)^2)$



SAW Components	R 2710
Resonator	311,063 MHz
Data Sheet	

Published by EPCOS AG
Surface Acoustic Wave Components Division, SAW CE AE PD
P.O. Box 80 17 09, D-81617 München

© EPCOS AG 2001. All Rights Reserved.

As far as patents or other rights of third parties are concerned, liability is only assumed for components per se, not for applications, processes and circuits implemented within components or assemblies.

The information describes the type of component and shall not be considered as assured characteristics.

Terms of delivery and rights to change design reserved.

For questions on technology, prices and delivery please contact the sales offices of EPCOS AG or the international representatives.

Due to technical requirements components may contain dangerous substances. For information on the type in question please also contact one of our sales offices.