

Excellent Integrated System Limited

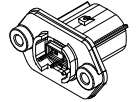
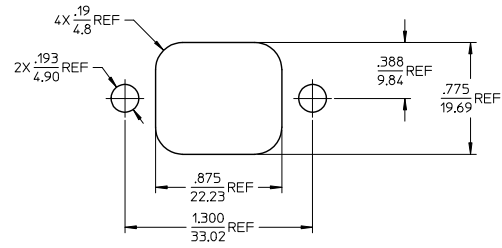
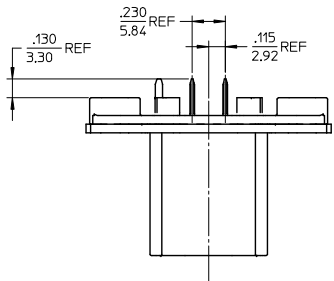
Stocking Distributor

Click to view price, real time Inventory, Delivery & Lifecycle Information:

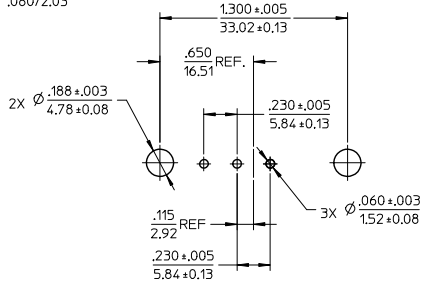
[Molex Connector Corporation](#)
[19428-0009](#)

For any questions, you can email us directly:

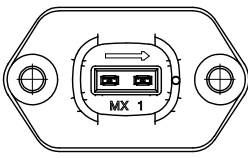
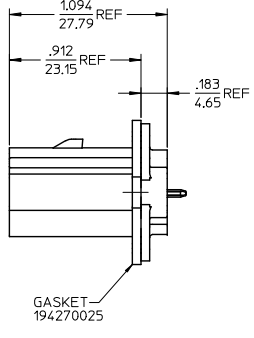
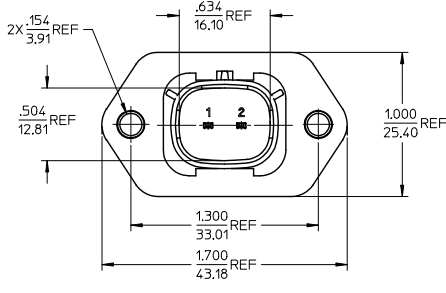
sales@integrated-circuit.com



RECOMMENDED PANEL CUTOUT - MAX PANEL THICKNESS .080/2.03



RECOMMENDED PCB LAYOUT COMPONENT SIDE
TOLERANCES ARE NON-ACCUMULATIVE



- NOTES:
- MATERIALS:
HOUSING: POLYESTER (PBT), GLASS FILLED, UL94 V-0.
COLOR: BLACK
TERMINALS: COPPER ALLOY
 - FINISHES: 1. TIN ONLY: 100µN TIN OVER 50µN NICKEL
2. TIN/GOLD: 30µN SELECT GOLD (CONTACT MATING AREA),
100µN SELECT TIN (PCB TAIL AREA) OVER 50µN NICKEL OVERALL.
 - PRODUCT SPECIFICATION: PS-19428-001.
 - PACKAGING SPECIFICATION: PK-19428-002.
 - MATES WITH: 19418 SERIES RECEPTACLE ASSEMBLIES.

PRODUCTION RELEASE EC NO: E1C2005-0215 DRAWN: JPAWL I CK 2005/06/19 CHECKED: JPAWL I CK 2005/06/14 APPROVED: RDEROSS 2005/06/14	QUALITY SYMBOLS ▽=0 ▽=0	GENERAL TOLERANCES (UNLESS SPECIFIED) <table border="1"> <tr> <th></th> <th>mm</th> <th>INCH</th> </tr> <tr> <td>4 PLACES</td> <td>± .015</td> <td>± .0005</td> </tr> <tr> <td>3 PLACES</td> <td>± .015</td> <td>± .0005</td> </tr> <tr> <td>2 PLACES</td> <td>± 0.38</td> <td>± .015</td> </tr> <tr> <td>1 PLACE</td> <td>± .015</td> <td>± .0005</td> </tr> </table> ANGULAR ± 1°		mm	INCH	4 PLACES	± .015	± .0005	3 PLACES	± .015	± .0005	2 PLACES	± 0.38	± .015	1 PLACE	± .015	± .0005	DIMENSION STYLE IN/MM DRAWN BY: BRUPERT DATE: 04/06/23 CHECKED BY: JPAWL I CK DATE: 04/06/23 APPROVED BY: RDEROSS DATE: 04/06/23	SCALE: 2:1 DESIGN UNITS: INCH THIRD ANGLE PROJECTION	MATERIAL NUMBER: 194280009 TERMINAL PLATING: TIN
				mm	INCH															
			4 PLACES	± .015	± .0005															
3 PLACES	± .015	± .0005																		
2 PLACES	± 0.38	± .015																		
1 PLACE	± .015	± .0005																		
MATERIAL NUMBER: 194280025 SELECT GOLD/TIN																				
TITLE: 2-WAY STRAIGHT HEADER ASSEMBLY, SHORT VERSION MOLEX INCORPORATED DOCUMENT NO.: SD-19428-001 SHEET NO.: 1 OF 1																				
DRAFT WHERE APPLICABLE MUST REMAIN WITHIN DIMENSIONS		SEE CHART		THIS DRAWING CONTAINS INFORMATION THAT IS PROPRIETARY TO MOLEX INCORPORATED AND SHOULD NOT BE USED WITHOUT WRITTEN PERMISSION																