



**Distributor of Molex Connector Corporation: Excellent Integrated System Limited**  
Datasheet of 0009484099 - Connector Receptacle, Bottom Entry 9 Position 0.156" (3.96mm)  
Tin Through Hole

Contact us: [sales@integrated-circuit.com](mailto:sales@integrated-circuit.com) Website: [www.integrated-circuit.com](http://www.integrated-circuit.com)

---

## **Excellent Integrated System Limited**

Stocking Distributor

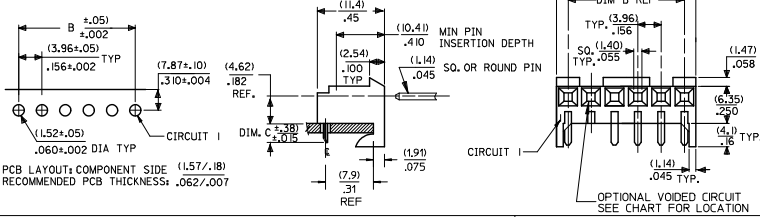
Click to view price, real time Inventory, Delivery & Lifecycle Information:

[Molex Connector Corporation](#)  
[0009484099](#)

For any questions, you can email us directly:  
[sales@integrated-circuit.com](mailto:sales@integrated-circuit.com)

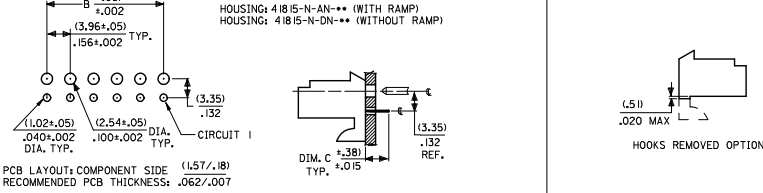
RIGHT ANGLE

HOUSING: 41815-N-AN-\*\*\* (WITH RAMP)  
 HOUSING: 41815-N-DN-\*\*\* (WITHOUT RAMP)



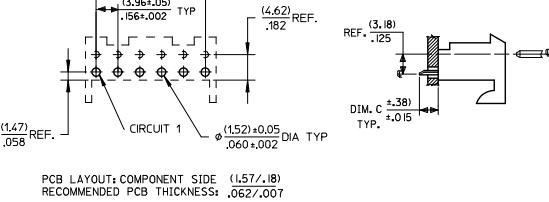
BOTTOM ENTRY

HOUSING: 41815-N-AN-\*\*\* (WITH RAMP)  
 HOUSING: 41815-N-DN-\*\*\* (WITHOUT RAMP)



TOP ENTRY

HOUSING: 41815-N-AN-\*\*\* (WITH RAMP)  
 HOUSING: 41815-N-DN-\*\*\* (WITHOUT RAMP)



DIM. B	DIM. A	NO. OF CKTS
3.96	13.02±.25	2
.156	.408±.010	2
7.92	11.79±.25	3
3.12	.464±.010	3
11.89	15.15±.25	4
.468	.620±.010	4
15.85	19.71±.25	5
.624	.776±.010	5
19.81	23.37±.25	6
.780	.932±.010	6
23.77	27.64±.30	7
.936	1.088±.012	7
27.74	31.69±.25	8
1.092	1.244±.012	8
31.70	35.56±.30	9
1.248	1.400±.012	9
35.66	39.52±.30	10
1.404	1.556±.012	10
39.62	43.48±.30	11
1.560	1.712±.012	11
43.59	47.45±.30	12
1.716	1.868±.012	12
47.55	51.41±.30	13
1.872	2.024±.012	13
51.51	55.37±.36	14
2.028	2.180±.014	14
55.47	59.33±.36	15
2.184	2.336±.014	15

- NOTES:  
 1. MATERIAL: HOUSING: POLYESTER, RATED UL 94V-0. COLOR: NATURAL (WHITE)  
 2. FINISH:  
 (197) = OVERALL REFLOWED MATTE TIN: 0.00152/0.00060 MIN OVER 0.00127/0.00050 MIN NICKEL.  
 (208) = SELECT GOLD: 0.00038/0.00015 MIN. SELECT TIN: 0.00254/0.00100 MIN. OVERALL NICKEL UNDERPLATE: 0.00127/0.00050 MIN.  
 (228) = SELECT GOLD: 0.00076/0.00030 MIN. SELECT TIN: 0.00254/0.00100 MIN. OVERALL NICKEL UNDERPLATE: 0.00127/0.00050 MIN.  
 (909) = OVERALL TIN: 0.00254/0.00100 MIN.  
 3. PRODUCT SPECIFICATION: PS-08-50  
 4. PACKAGING: SEE CHARTS  
 5. FOR TOP ENTRY AND RIGHT ANGLE ASSEMBLIES WITH LOWER INSERTION FORCE USE SINGLE BEAM CONTACT, (TERMINAL NO. 4244)  
 6. SOLDERABILITY: WHEN PARTS ARE SOLDERED AT A TEMPERATURE OF 230°C (446°F) FOR 5 SECONDS EACH SOLDERED SURFACE SHALL BE A MINIMUM OF 95% COVERED WITH A SMOOTH CONTINUOUS ADHERENT COATING. FOR ADDITIONAL INFORMATION SEE SMES-152.  
 7. PARTS ARE STACKABLE END TO END ON  $3.96/1.56$  CENTERLINE.  
 8. THIS PART CONFORMS TO CLASS B REQUIREMENTS OF COSMETIC SPEC PS-45499-002.

ADD: 41815-0687 EC NO: ICP2015-1957 DRAWN BY: PPER 2014/09/30 CHECKED BY: CHKONGTUN 2014/09/30 APPROVED BY: SHTH 2014/10/23	QUALITY SYMBOLS $\nabla=0$ $\nabla=0$ $\nabla=0$	GENERAL TOLERANCES (UNLESS SPECIFIED)		DIMENSION STYLE MM/IN		SCALE --	DESIGN UNITS INCH	THIRD ANGLE PROJECTION	
		4 PLACES $\pm$ --- $\pm$ ---	mm INCH	DRAWN BY SAMIEC	DATE 01/28/87	TITLE KK 156 HOUSING PCB 41815 SERIES			
		3 PLACES $\pm$ --- $\pm$ .010	$\pm$ .25 $\pm$ .015	CHECKED BY SAMIEC	DATE 01/28/87				
		2 PLACES $\pm$ 0.25 $\pm$ .015	$\pm$ .38 $\pm$ ---	APPROVED BY LENZ	DATE 01/28/87				
AN3		DRAFT WHERE APPLICABLE MUST REMAIN WITHIN DIMENSIONS		SIZE B		THIS DRAWING CONTAINS INFORMATION THAT IS PROPRIETARY TO MOLEX INCORPORATED AND SHOULD NOT BE USED WITHOUT WRITTEN PERMISSION			