



**Distributor of Molex Connector Corporation: Excellent Integrated System Limited**  
Datasheet of 09-48-3114 - Connector Receptacle, Bottom Entry 11 Position 0.156" (3.96mm)  
Gold Through Hole

Contact us: [sales@integrated-circuit.com](mailto:sales@integrated-circuit.com) Website: [www.integrated-circuit.com](http://www.integrated-circuit.com)

---

## **Excellent Integrated System Limited**

Stocking Distributor

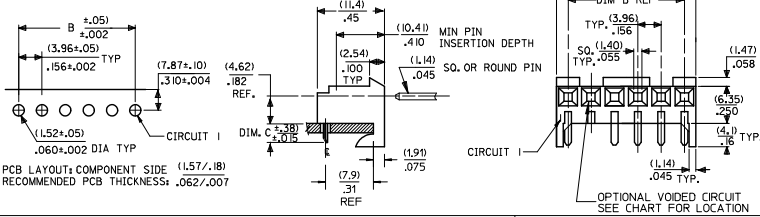
Click to view price, real time Inventory, Delivery & Lifecycle Information:

[Molex Connector Corporation](#)  
[09-48-3114](#)

For any questions, you can email us directly:  
[sales@integrated-circuit.com](mailto:sales@integrated-circuit.com)

RIGHT ANGLE

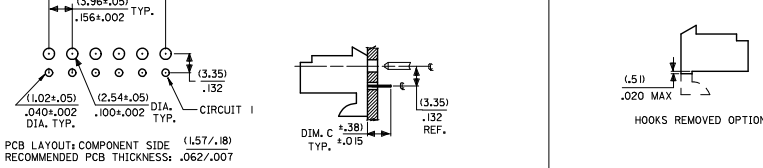
HOUSING: 41815-N-AN-\*\* (WITH RAMP)  
 HOUSING: 41815-N-DN-\*\* (WITHOUT RAMP)



DIM. B	DIM. A	NO. OF CKTS
(3.96)	(1.02+.25)	2
.156	.408+.010	2
(7.92)	(1.179+.25)	3
.312	.464+.010	3
(11.89)	(1.159+.25)	4
.468	.620+.010	4
(15.85)	(1.197+.25)	5
.624	.776+.010	5
(19.81)	(2.347+.25)	6
.780	.932+.010	6
(23.77)	(2.764+.30)	7
.936	1.088+.012	7
(27.74)	(3.169+.25)	8
1.092	1.244+.012	8
(31.70)	(3.556+.30)	9
1.248	1.400+.012	9
(35.66)	(3.952+.30)	10
1.404	1.556+.012	10
(39.62)	(4.348+.30)	11
1.560	1.712+.012	11
(43.59)	(4.745+.30)	12
1.716	1.868+.012	12
(47.55)	(5.141+.30)	13
1.872	2.024+.012	13
(51.51)	(5.537+.36)	14
2.028	2.180+.014	14
(55.47)	(5.933+.36)	15
2.184	2.336+.014	15

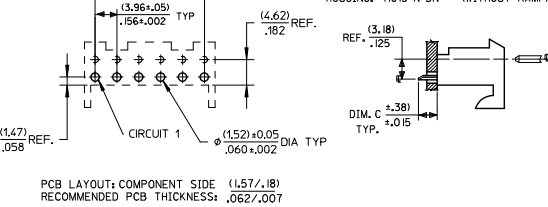
BOTTOM ENTRY

HOUSING: 41815-N-AN-\*\* (WITH RAMP)  
 HOUSING: 41815-N-DN-\*\* (WITHOUT RAMP)



TOP ENTRY

HOUSING: 41815-N-AN-\*\* (WITH RAMP)  
 HOUSING: 41815-N-DN-\*\* (WITHOUT RAMP)



- NOTES:  
 1. MATERIAL: HOUSING: POLYESTER, RATED UL 94V-0. COLOR: NATURAL (WHITE)  
 2. FINISH:  
 (197) = OVERALL REFLOWED MATTE TIN: 0.00152/.000060 MIN OVER 0.00127/.000050 MIN NICKEL.  
 (208) = SELECT GOLD: 0.00038/.000015 MIN.  
 SELECT TIN: 0.00254/.000100 MIN.  
 OVERALL NICKEL UNDERPLATE: 0.00127/.000050 MIN.  
 (228) = SELECT GOLD: 0.00076/.000030 MIN.  
 SELECT TIN: 0.00254/.000100 MIN.  
 OVERALL NICKEL UNDERPLATE: 0.00127/.000050 MIN.  
 (909) = OVERALL TIN: 0.00254/.000100 MIN.  
 3. PRODUCT SPECIFICATION: PS-08-50  
 4. PACKAGING: SEE CHARTS  
 5. FOR TOP ENTRY AND RIGHT ANGLE ASSEMBLIES WITH LOWER INSERTION FORCE USE SINGLE BEAM CONTACT, (TERMINAL NO. 4244)  
 6. SOLDERABILITY: WHEN PARTS ARE SOLDERED AT A TEMPERATURE OF 230°C (446°F) FOR 5 SECONDS EACH SOLDERED SURFACE SHALL BE A MINIMUM OF 95% COVERED WITH A SMOOTH CONTINUOUS ADHERENT COATING. FOR ADDITIONAL INFORMATION SEE SMES-152.  
 7. PARTS ARE STACKABLE END TO END ON (3.96)/.156 CENTERLINE.  
 8. THIS PART CONFORMS TO CLASS B REQUIREMENTS OF COSMETIC SPEC PS-45499-002.

ADD: 41815-0687 EC NO.: IJCP2015-1957 DRAWN BY: PER 2014/09/30 CHECKED BY: CHOKNONGTIN 2014/09/30 APPROVED BY: STH 2014/10/23 AN3 REV	QUALITY SYMBOLS	GENERAL TOLERANCES (UNLESS SPECIFIED)	DIMENSION STYLE	SCALE	DESIGN UNITS	THIRD ANGLE PROJECTION																								
	$\sqrt{ }\text{-}0$ $\sqrt{ }\text{-}0$ $\sqrt{ }\text{-}0$	<table border="1"> <tr><th colspan="2">mm</th><th colspan="2">INCH</th></tr> <tr><td>4 PLACES</td><td>± .25</td><td>± .010</td><td>± .015</td></tr> <tr><td>3 PLACES</td><td>± .38</td><td>± .015</td><td>± .020</td></tr> <tr><td>2 PLACES</td><td>± .51</td><td>± .020</td><td>± .025</td></tr> <tr><td>1 PLACE</td><td>± .64</td><td>± .025</td><td>± .030</td></tr> <tr><td>0 PLACE</td><td>± .76</td><td>± .030</td><td>± .035</td></tr> </table>	mm		INCH		4 PLACES	± .25	± .010	± .015	3 PLACES	± .38	± .015	± .020	2 PLACES	± .51	± .020	± .025	1 PLACE	± .64	± .025	± .030	0 PLACE	± .76	± .030	± .035	MM/IN	--	INCH	
	mm		INCH																											
	4 PLACES	± .25	± .010	± .015																										
	3 PLACES	± .38	± .015	± .020																										
2 PLACES	± .51	± .020	± .025																											
1 PLACE	± .64	± .025	± .030																											
0 PLACE	± .76	± .030	± .035																											
	<table border="1"> <tr><td>DRAWN BY</td><td>DATE</td><td>TITLE</td></tr> <tr><td>SAMIEC</td><td>01/28/87</td><td>KK 156 HOUSING PCB 41815 SERIES</td></tr> <tr><td>CHECKED BY</td><td>DATE</td><td></td></tr> <tr><td>SAMIEC</td><td>01/28/87</td><td></td></tr> <tr><td>APPROVED BY</td><td>DATE</td><td></td></tr> <tr><td>LENZ</td><td>01/28/87</td><td></td></tr> </table>	DRAWN BY	DATE	TITLE	SAMIEC	01/28/87	KK 156 HOUSING PCB 41815 SERIES	CHECKED BY	DATE		SAMIEC	01/28/87		APPROVED BY	DATE		LENZ	01/28/87												
DRAWN BY	DATE	TITLE																												
SAMIEC	01/28/87	KK 156 HOUSING PCB 41815 SERIES																												
CHECKED BY	DATE																													
SAMIEC	01/28/87																													
APPROVED BY	DATE																													
LENZ	01/28/87																													
	ANGULAR ±1/2° DRAFT WHERE APPLICABLE MUST REMAIN WITHIN DIMENSIONS	MATERIAL NO. SEE CHART DOCUMENT NO. SDA-41815			 SHEET NO. 1 OF *																									
		THIS DRAWING CONTAINS INFORMATION THAT IS PROPRIETARY TO MOLEX INCORPORATED AND SHOULD NOT BE USED WITHOUT WRITTEN PERMISSION																												