



Distributor of Molex Connector Corporation: Excellent Integrated System Limited
Datasheet of 09-48-3025 - Connector Receptacle 2 Position 0.156" (3.96mm) Gold Through
Hole, Right Angle

Contact us: sales@integrated-circuit.com Website: www.integrated-circuit.com

Excellent Integrated System Limited

Stocking Distributor

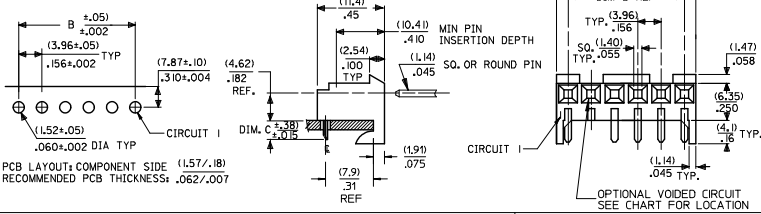
Click to view price, real time Inventory, Delivery & Lifecycle Information:

[Molex Connector Corporation](#)
[09-48-3025](#)

For any questions, you can email us directly:
sales@integrated-circuit.com

RIGHT ANGLE

HOUSING: 41815-N-AN-**-*(WITH RAMP)
 HOUSING: 41815-N-DN-**-*(WITHOUT RAMP)

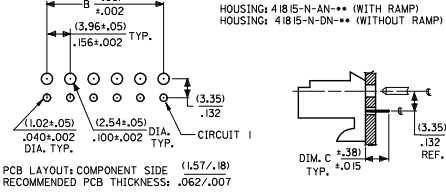


PCB LAYOUT: COMPONENT SIDE (1.57/.18)
 RECOMMENDED PCB THICKNESS: .062/.007

DIM. B	DIM. A	NO. OF CKTS
(3.96)	(1.02±.25)	2
.156	.408±.010	2
(7.92)	(1.179±.25)	3
.312	.464±.010	3
(11.89)	(1.15±.25)	4
.468	.620±.010	4
(15.85)	(1.97±.25)	5
.624	.776±.010	5
(19.81)	(2.347±.25)	6
.780	.932±.010	6
(23.77)	(2.764±.30)	7
.936	1.088±.012	7
(27.74)	(3.169±.25)	8
1.092	1.244±.012	8
(31.70)	(3.556±.30)	9
1.248	1.400±.012	9
(35.66)	(3.952±.30)	10
1.404	1.556±.012	10
(39.62)	(4.348±.30)	11
1.560	1.712±.012	11
(43.59)	(4.745±.30)	12
1.716	1.868±.012	12
(47.55)	(5.141±.30)	13
1.872	2.024±.012	13
(51.51)	(5.537±.36)	14
2.028	2.180±.014	14
(55.47)	(5.933±.36)	15
2.184	2.336±.014	15

BOTTOM ENTRY

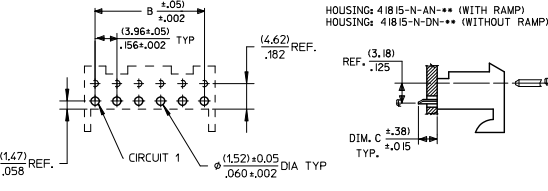
HOUSING: 41815-N-AN-**-*(WITH RAMP)
 HOUSING: 41815-N-DN-**-*(WITHOUT RAMP)



PCB LAYOUT: COMPONENT SIDE (1.57/.18)
 RECOMMENDED PCB THICKNESS: .062/.007

TOP ENTRY

HOUSING: 41815-N-AN-**-*(WITH RAMP)
 HOUSING: 41815-N-DN-**-*(WITHOUT RAMP)



PCB LAYOUT: COMPONENT SIDE (1.57/.18)
 RECOMMENDED PCB THICKNESS: .062/.007

- NOTES:
 1. MATERIAL: HOUSING: POLYESTER, RATED UL 94V-0. COLOR: NATURAL (WHITE)
 2. FINISH:
 (197) = OVERALL REFLOWED MATTE TIN: 0.00152/.000060 MIN OVER 0.00127/.000050 MIN NICKEL.
 (208) = SELECT GOLD: 0.00038/.000015 MIN. SELECT TIN: 0.00254/.000100 MIN. OVERALL NICKEL UNDERPLATE: 0.00127/.000050 MIN. SELECT TIN: 0.00254/.000100 MIN.
 (228) = SELECT GOLD: 0.00076/.000030 MIN. SELECT TIN: 0.00254/.000100 MIN. OVERALL NICKEL UNDERPLATE: 0.00127/.000050 MIN.
 (909) = OVERALL TIN: 0.00254/.000100 MIN.
 3. PRODUCT SPECIFICATION: PS-08-50
 4. PACKAGING: SEE CHARTS
 5. FOR TOP ENTRY AND RIGHT ANGLE ASSEMBLIES WITH LOWER INSERTION FORCE USE SINGLE BEAM CONTACT, (TERMINAL NO. 4244)
 6. SOLDERABILITY: WHEN PARTS ARE SOLDERED AT A TEMPERATURE OF 230°C (446°F) FOR 5 SECONDS EACH SOLDERED SURFACE SHALL BE A MINIMUM OF 95% COVERED WITH A SMOOTH CONTINUOUS ADHERENT COATING. FOR ADDITIONAL INFORMATION SEE SMES-152.
 7. PARTS ARE STACKABLE END TO END ON (3.96)/.156 CENTERLINE.
 8. THIS PART CONFORMS TO CLASS B REQUIREMENTS OF COSMETIC SPEC PS-45499-002.

QUALITY SYMBOLS	GENERAL TOLERANCES (UNLESS SPECIFIED)		DIMENSION STYLE		SCALE	DESIGN UNITS	THIRD ANGLE PROJECTION	
	mm	INCH	MM/IN	MM/IN				
∇=0	4 PLACES ±	±	DRAWN BY	DATE	TITLE	INCH	◎	
∇=0	3 PLACES ±	±.010	SAMIEC	01/28/87				KK 156 HOUSING PCB 41815 SERIES
∇=0	2 PLACES ±	±.025 ±.015	CHECKED BY	DATE				
∇=0	1 PLACE ±	±.038 ±	SAMIEC	01/28/87				
	0 PLACE ±	±	APPROVED BY	DATE	DOCUMENT NO.	SHEET NO.		
	ANGULAR ±1/2°		LENZ	01/28/87			SDA-41815	1 OF *
	DRAFT WHERE APPLICABLE MUST REMAIN WITHIN DIMENSIONS		MATERIAL NO. SEE CHART					
	SIZE B THIS DRAWING CONTAINS INFORMATION THAT IS PROPRIETARY TO MOLEX INCORPORATED AND SHOULD NOT BE USED WITHOUT WRITTEN PERMISSION							