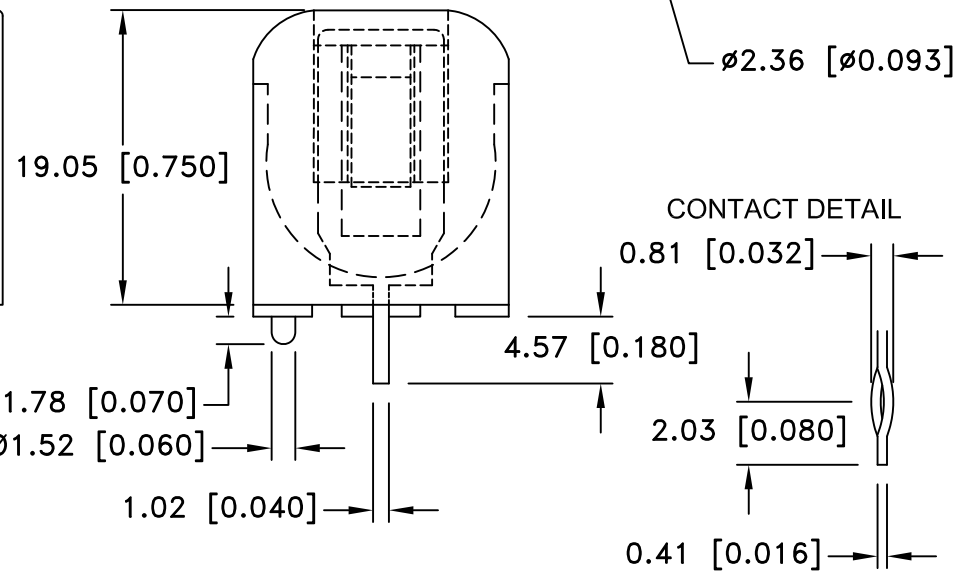
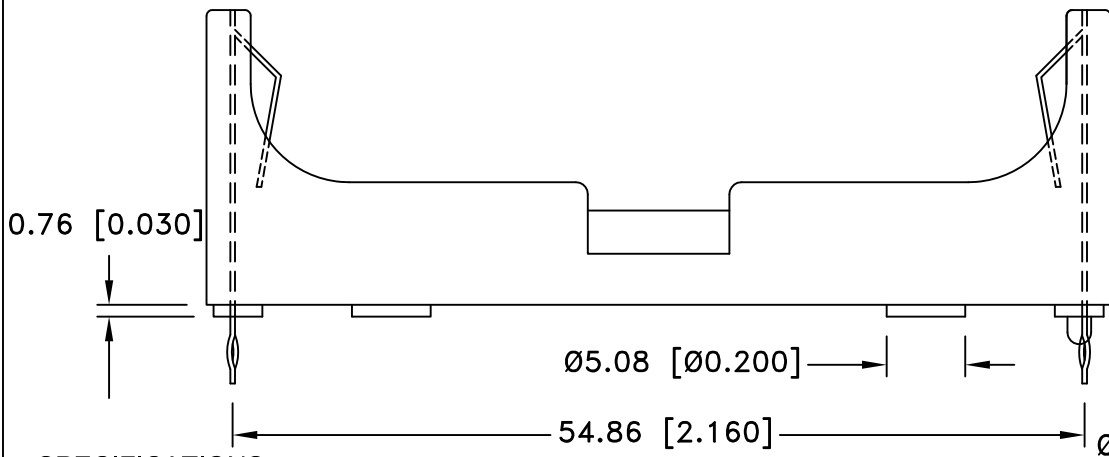
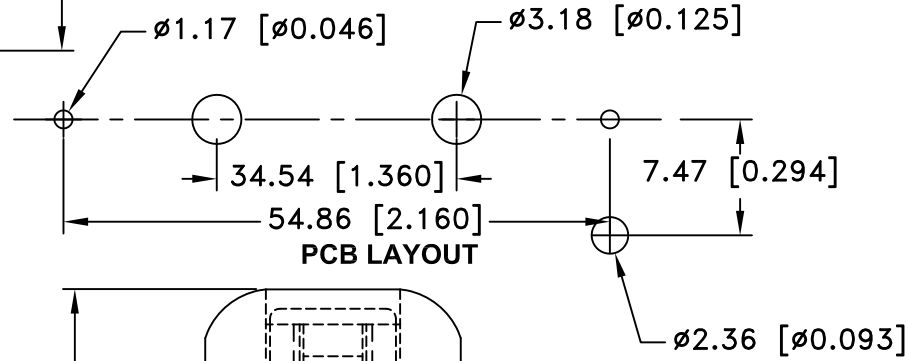


| Date     | SYM | REVISION RECORD  | AUTH | DR.  | CK. |
|----------|-----|--|------|------|-----|
| 05/03/03 | A   | ALL DIM. CHANGED TO 3 DECIMAL POINT                                      | T.B. | B.S. |     |
| 07/25/03 | B   | CHANGED MATL. SPEC. ADDED MATERIAL ON BOTH ENDS TO CLOSE IT DIM. CHANGED | T.B. | B.S. |     |
| 10/29/05 | C   | ADDED "ROHS COMPLIANT"   | T.B. | B.S. |     |
| 10/17/14 | D   | UPDATED TO ROHS 2 COMPLIANT  | T.B. | B.S. |     |




**SPECIFICATIONS:**

Holder Material: Black PBT, Flammability Rating: UL94V-0, FILE #E53829  
 Contacts: 301 Spring temper stainless steel, nickel plated overall  
 Dielectric strength: 560 Volts/mil at 25°C for 5 Sec.  
 Temperature Range: -55°C to +180°C  
 Vibration Test: 10-50-10 Hz swept in 60 seconds

X,Y,Z direction: 1 hour each direction, No dislodgement of the cell or damage, No discontinuity over 10 micro-seconds  
 Shock Test: Half sine wave acceleration 150g, 6 micro-seconds, 1 shock pulses each direction per axis, total of 6 pulses, No evidence of physical damage

NOTES: Eyelet Stimpson style #A1883 0.110" OD x 0.190" Flange  
 Flange Recess Ø0.203" x 0.090" Deep  
 Accepts Standard 2-56 Machine Screws

Accessories: BI-UM-3-4, Insulator  
 ROHS 2 COMPLIANT

|                                |   |                          |                                   |
|--------------------------------|---|--------------------------|-----------------------------------|
| Tolerance<br>(Except as noted) |  <b>Memory Protection Devices, Inc</b><br>200 Broad Hollow Road, Farmingdale, New York 11735 |                          |                                   |
|                                | decimal<br>±.5 (.020)   | Scale                    | Drawn By B.S.<br>Approved By T.B. |
| Fractional<br>± .8 (.030)      | Title<br>AA HOLDER  |                          |                                   |
| Angular<br>± 3°                | Date<br>10/17/14  | Drawing Number<br>BHAA-3 |                                   |