

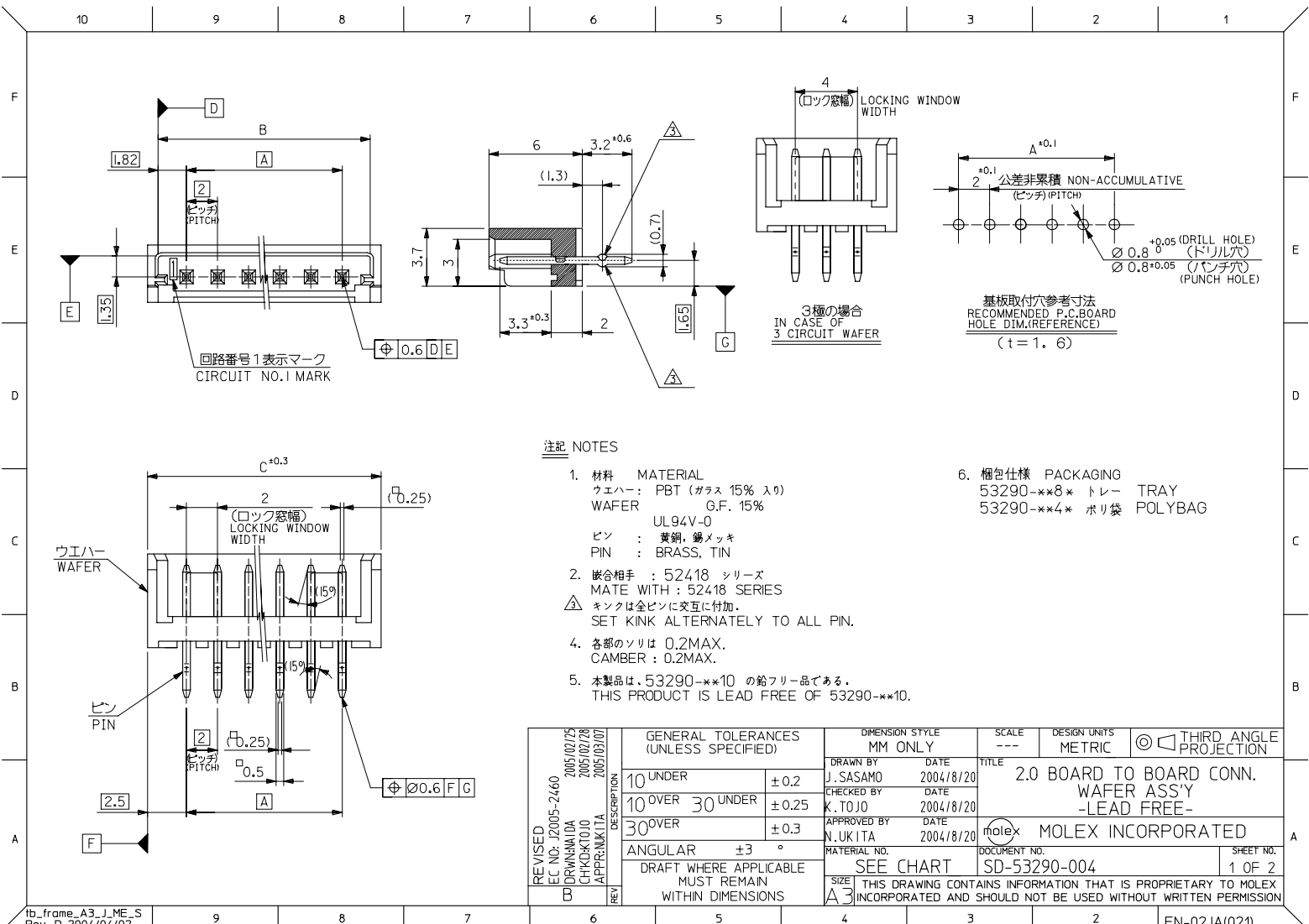
## **Excellent Integrated System Limited**

Stocking Distributor

Click to view price, real time Inventory, Delivery & Lifecycle Information:

[Molex Connector Corporation](#)  
[53290-1580](#)

For any questions, you can email us directly:  
[sales@integrated-circuit.com](mailto:sales@integrated-circuit.com)



**注記 NOTES**

- 材料 MATERIAL  
ウエハー: PBT (ガラス 15% 入り)  
WAFER O.F. 15%  
UL94V-0  
ピン: 黄銅, 錫メッキ  
PIN: BRASS, TIN
- 嵌合相手: 52418 シリーズ  
MATE WITH: 52418 SERIES  
キックは全ピンに交互に付加。  
SET KINK ALTERNATELY TO ALL PIN.
- 各部のソリは 0.2MAX.  
CAMBER: 0.2MAX.
- 本製品は、53290-\*\*10 の鉛フリー品である。  
THIS PRODUCT IS LEAD FREE OF 53290-\*\*10.

- 梱包仕様 PACKAGING  
53290-\*\*8\* トレー TRAY  
53290-\*\*4\* ポリ袋 POLYBAG

REVISED EC NO: J2005-2460 DRAWN/MADE CHKD/KTO APPR/NKITA REV	DESCRIPTION 2005/02/25 2005/02/28 2005/03/07	GENERAL TOLERANCES (UNLESS SPECIFIED)		DIMENSION STYLE	SCALE	DESIGN UNITS	THIRD ANGLE	
				MM ONLY	---	METRIC	PROJECTION	
		10 UNDER	± 0.2	DRAWN BY	DATE	TITLE		
		10 OVER 30 UNDER	± 0.25	J. SASAMO	2004/8/20	2.0 BOARD TO BOARD CONN. WAFER ASS'Y -LEAD FREE-		
30 OVER	± 0.3	CHECKED BY	DATE	Molex		MOLEX INCORPORATED		
ANGULAR	± 3 °	APPROVED BY	DATE	DOCUMENT NO.		SHEET NO.		
DRAFT WHERE APPLICABLE MUST REMAIN WITHIN DIMENSIONS		N. UKITA	2004/8/20	SEE CHART		SD-53290-004	1 OF 2	
		SIZE		THIS DRAWING CONTAINS INFORMATION THAT IS PROPRIETARY TO MOLEX INCORPORATED AND SHOULD NOT BE USED WITHOUT WRITTEN PERMISSION				
		A 3						

