

Excellent Integrated System Limited

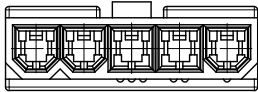
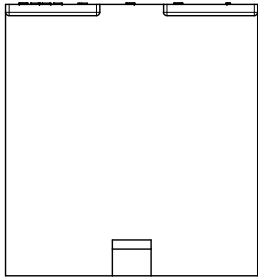
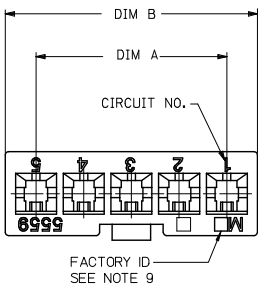
Stocking Distributor

Click to view price, real time Inventory, Delivery & Lifecycle Information:

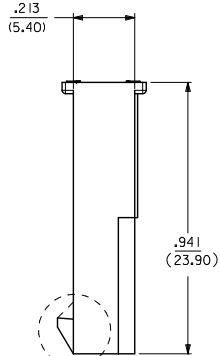
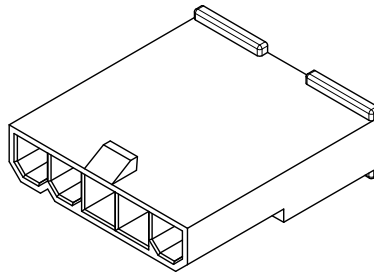
[Molex Connector Corporation](#)
[0039014047](#)

For any questions, you can email us directly:

sales@integrated-circuit.com



5 CKT WITHOUT MOUNTING EARS SHOWN



LOCK OPTION:



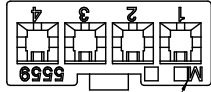
POSITIVE LOCK PASSIVE LOCK

CKT SIZE	DIM A	DIM B	DIM C	DIM D
2	.165 (4.20)	.378 (9.60)	.394 (10.00)	.591 (15.00)
4	.496 (12.60)	.709 (18.00)	.724 (18.40)	.921 (23.40)
5	.661 (16.80)	.874 (22.20)	.890 (22.60)	1.087 (27.60)
6	.827 (21.00)	1.039 (26.40)	1.055 (26.80)	1.252 (31.80)
7	.992 (25.20)	1.205 (30.60)	1.220 (31.00)	1.417 (36.00)
8	1.157 (29.40)	1.370 (34.80)	1.386 (35.20)	1.583 (40.20)
9	1.323 (33.60)	1.535 (39.00)	1.551 (39.40)	1.748 (44.40)
10	1.488 (37.80)	1.701 (43.20)	1.717 (43.60)	1.913 (48.60)
11	1.654 (42.00)	1.866 (47.40)	1.882 (47.80)	2.079 (52.80)
12	1.819 (46.20)	2.031 (51.60)	2.047 (52.00)	2.244 (57.00)

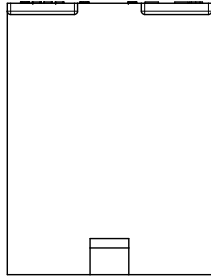
NOTES:

- MATERIAL: BLANK-NYLON 6/6, UL 94V-2, COLOR: NATURAL.
210-NYLON 6/6, UL 94V-0, COLOR: NATURAL.
400-NYLON 6/6, UL 94 V-0, COLOR: BLACK.
- FINISH: NOTE APPLICABLE
- PRODUCT SPECIFICATION: PS-5556-001
- PACKAGING SPECIFICATION: BULK PER PK-5559-003
- THIS PART MATES WITH RECEPTACLE NO. 5557.
- THIS PART IS FOR USE WITH MOLEX MALE TERMINAL NO. 5558-*
- PANEL MOUNT VERSION IS FOR USE WITH .031/.079/(0.80/2.00) THICK PANELS.
- PANEL SHOULD BE PUNCHED IN THE DIRECTION OF CONNECTOR INSERTION.
- FACTORY ID MAY BE LOCATED ON EARS.
- THIS PART CONFORMS TO CLASS B REQUIREMENTS OF COSMETIC SPECIFICATION PS-45499-002.
- PART IS NOT DESIGNED FOR CURRENT SHARING.
- PARTS ARE NOT TO BE MATED OR UNMATED WHILE CIRCUITS ARE LIVE.
- WIRES ARE TO BE DRESSED IN SUCH A MANNER TO ALLOW THE TERMINALS TO FLOAT FREELY IN THE POCKET.

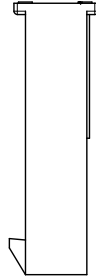
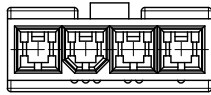
ADD 2 CKT EC NO: UCP2015-1291 DRAWING NO: 2014/11/12 CHKD: BELL APPR: SMITH 2015/02/09	QUALITY SYMBOLS ∇=0 ∇=0 ∇=0	GENERAL TOLERANCES (UNLESS SPECIFIED)		DIMENSION STYLE		SCALE	DESIGN UNITS	THIRD ANGLE PROJECTION	
				IN/MM		4:1	METRIC		
				DRAWN BY DATE		TITLE			
				CHECKED BY DATE		MINI-FIT JR. SERIES PLUG (SINGLE ROW)			
		APPROVED BY DATE		MATERIAL NO.		DOCUMENT NO.		SHEET NO.	
		ANGULAR ±1/2°		SEE CHART		SD-5559-NLP*		1 OF 3	
		DRAFT WHERE APPLICABLE MUST REMAIN WITHIN DIMENSIONS		THIS DRAWING CONTAINS INFORMATION THAT IS PROPRIETARY TO MOLEX INCORPORATED AND SHOULD NOT BE USED WITHOUT WRITTEN PERMISSION					



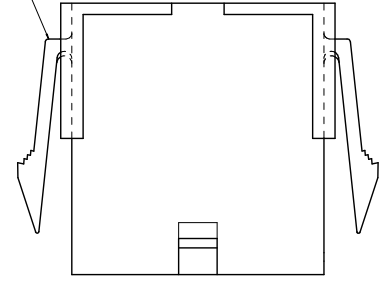
FACTORY ID
SEE NOTE 9



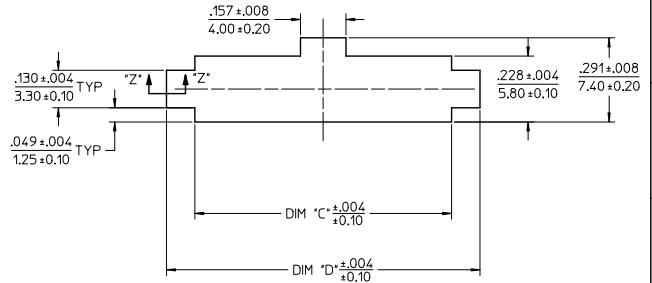
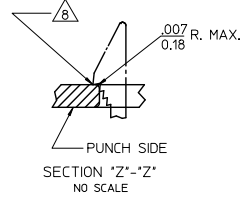
4 CKT WITHOUT
MOUNTING EARS SHOWN



SEE NOTE 9



WITH MOUNTING EARS



2 CIRCUIT



6 CIRCUIT

POLARIZATION

SEE SHEET 1 EC NO: UCP2015-1291 DRAWING/REV: 2014/11/12 CHKD: BELL APPR: SMITH 2015/02/09	QUALITY SYMBOLS 	GENERAL TOLERANCES (UNLESS SPECIFIED)		DIMENSION STYLE		SCALE	DESIGN UNITS	THIRD ANGLE PROJECTION	
		mm	INCH	IN/MM		4:1	METRIC		
		4 PLACES ±	±	DRAWN BY	DATE	TITLE			
		3 PLACES ±	±	KSS	2/19/89	MINI-FIT JR. SERIES PLUG (SINGLE ROW)			
2 PLACES ±	±	CHECKED BY	DATE						
1 PLACE ±	±	RJF	2/19/89						
0 PLACE ±	±	APPROVED BY	DATE	MATERIAL NO.		DOCUMENT NO.	SHEET NO.		
		FSMITH	2011/03/10	SEE CHART		SD-5559-NLP*	2 OF 3		
ANGULAR ±1/2° DRAFT WHERE APPLICABLE MUST REMAIN WITHIN DIMENSIONS		THIS DRAWING CONTAINS INFORMATION THAT IS PROPRIETARY TO MOLEX INCORPORATED AND SHOULD NOT BE USED WITHOUT WRITTEN PERMISSION							

TOOLED	PART NO	ENG NO	CKT SIZE	MOUNTING OPTION	LOCK OPTION	MATERIAL SEE NOTE 1	TOOLED	PART NO	ENG NO	CKT SIZE	MOUNTING OPTION	LOCK OPTION	MATERIAL SEE NOTE 1
YES	46999-0655	5559-02P2	2	W/EARS	POSITIVE	94V-2	NO	NO E.D.P.	5559-04P4	4	W/EARS	PASSIVE	94V-2
YES	46999-0656	5559-02P3	2	W/O EAR	POSITIVE	94V-2	NO	NO E.D.P.	5559-04P5	4	W/O EAR	PASSIVE	94V-2
YES	46999-0657	5559-02P2-210	2	W/EARS	POSITIVE	94V-0	NO	NO E.D.P.	5559-04P4-210	4	W/EARS	PASSIVE	94V-0
YES	46999-0658	5559-02P3-210	2	W/O EAR	POSITIVE	94V-0	NO	NO E.D.P.	5559-04P5-210	4	W/O EAR	PASSIVE	94V-0
0	39-01-4042	5559-04P2	4	W/EARS	POSITIVE	94V-2							
YES	39-01-4046	5559-04P3	4	W/O EAR	POSITIVE	94V-2							
YES	39-01-4043	5559-04P2-210	4	W/EARS	POSITIVE	94V-0	YES	50-29-1599	5559-05P4-210	5	W/EARS	PASSIVE	94V-0
YES	39-01-4047	5559-04P3-210	4	W/O EAR	POSITIVE	94V-0	NO	NO E.D.P.	5559-06P5-210	5	W/O EAR	PASSIVE	94V-0
YES	46999-0561	5559-04P3-400	4	W/O EAR	POSITIVE	94V-0	NO	NO E.D.P.	5559-05P5-400	5	W/O EAR	PASSIVE	94V-0
YES	39-01-4052	5559-05P2	5	W/EARS	POSITIVE	94V-2	NO	NO E.D.P.	5559-06P4	6	W/EARS	PASSIVE	94V-2
YES	39-01-4056	5559-05P3	5	W/O EAR	POSITIVE	94V-2	NO	NO E.D.P.	5559-06P5	6	W/O EAR	PASSIVE	94V-2
YES	39-01-4053	5559-05P2-210	5	W/EARS	POSITIVE	94V-0	NO	NO E.D.P.	5559-06P4-210	6	W/EARS	PASSIVE	94V-0
YES	39-01-4057	5559-05P3-210	5	W/O EAR	POSITIVE	94V-0	NO	NO E.D.P.	5559-06P5-210	6	W/O EAR	PASSIVE	94V-0
YES	50-30-4446	5559-05P3-400	5	W/O EAR	POSITIVE	94V-0	NO	NO E.D.P.	5559-07P4	7	W/EARS	PASSIVE	94V-2
YES	39-01-4062	5559-06P2	6	W/EARS	POSITIVE	94V-2	NO	NO E.D.P.	5559-07P5	7	W/O EAR	PASSIVE	94V-2
YES	39-01-4066	5559-06P3	6	W/O EAR	POSITIVE	94V-2	NO	NO E.D.P.	5559-07P4-210	7	W/EARS	PASSIVE	94V-0
YES	39-01-4063	5559-06P2-210	6	W/EARS	POSITIVE	94V-0	NO	NO E.D.P.	5559-07P5-210	7	W/O EAR	PASSIVE	94V-0
YES	39-01-4067	5559-06P3-210	6	W/O EAR	POSITIVE	94V-0	NO	NO E.D.P.	5559-08P4	8	W/EARS	PASSIVE	94V-2
NO	39-01-4072	5559-07P2	7	W/EARS	POSITIVE	94V-2	NO	NO E.D.P.	5559-08P5	8	W/O EAR	PASSIVE	94V-2
NO	39-01-4076	5559-07P3	7	W/O EAR	POSITIVE	94V-2	NO	NO E.D.P.	5559-08P4-210	8	W/EARS	PASSIVE	94V-0
NO	39-01-4073	5559-07P2-210	7	W/EARS	POSITIVE	94V-0	NO	NO E.D.P.	5559-08P5-210	8	W/O EAR	PASSIVE	94V-0
NO	39-01-4077	5559-07P3-210	7	W/O EAR	POSITIVE	94V-0	NO	NO E.D.P.	5559-09P4	9	W/EARS	PASSIVE	94V-2
NO	39-01-4082	5559-08P2	8	W/EARS	POSITIVE	94V-2	NO	NO E.D.P.	5559-09P5	9	W/O EAR	PASSIVE	94V-2
NO	39-01-4086	5559-08P3	8	W/O EAR	POSITIVE	94V-2	NO	NO E.D.P.	5559-09P4-210	9	W/EARS	PASSIVE	94V-0
NO	39-01-4083	5559-08P2-210	8	W/EARS	POSITIVE	94V-0	NO	NO E.D.P.	5559-09P5-210	9	W/O EAR	PASSIVE	94V-0
NO	39-01-4087	5559-08P3-210	8	W/O EAR	POSITIVE	94V-0	NO	NO E.D.P.	5559-10P4	10	W/EARS	PASSIVE	94V-2
NO	39-01-4092	5559-09P2	9	W/EARS	POSITIVE	94V-2	NO	NO E.D.P.	5559-10P5	10	W/O EAR	PASSIVE	94V-2
NO	39-01-4096	5559-09P3	9	W/O EAR	POSITIVE	94V-2	NO	NO E.D.P.	5559-10P4-210	10	W/EARS	PASSIVE	94V-0
NO	39-01-4093	5559-09P2-210	9	W/EARS	POSITIVE	94V-0	NO	NO E.D.P.	5559-10P5-210	10	W/O EAR	PASSIVE	94V-0
NO	39-01-4097	5559-09P3-210	9	W/O EAR	POSITIVE	94V-0	NO	NO E.D.P.	5559-11P4	11	W/EARS	PASSIVE	94V-2
NO	39-01-4102	5559-10P2	10	W/EARS	POSITIVE	94V-2	NO	NO E.D.P.	5559-11P5	11	W/O EAR	PASSIVE	94V-2
NO	39-01-4106	5559-10P3	10	W/O EAR	POSITIVE	94V-2	NO	NO E.D.P.	5559-11P4-210	11	W/EARS	PASSIVE	94V-0
NO	39-01-4103	5559-10P2-210	10	W/EARS	POSITIVE	94V-0	NO	NO E.D.P.	5559-11P5-210	11	W/O EAR	PASSIVE	94V-0
NO	39-01-4107	5559-10P3-210	10	W/O EAR	POSITIVE	94V-0	NO	NO E.D.P.	5559-12P4	12	W/EARS	PASSIVE	94V-2
NO	39-01-4112	5559-11P2	11	W/EARS	POSITIVE	94V-2	NO	NO E.D.P.	5559-12P5	12	W/O EAR	PASSIVE	94V-2
NO	39-01-4116	5559-11P3	11	W/O EAR	POSITIVE	94V-2	NO	NO E.D.P.	5559-12P4-210	12	W/EARS	PASSIVE	94V-0
NO	39-01-4113	5559-11P2-210	11	W/EARS	POSITIVE	94V-0	NO	NO E.D.P.	5559-12P5-210	12	W/O EAR	PASSIVE	94V-0
NO	39-01-4117	5559-11P3-210	11	W/O EAR	POSITIVE	94V-0	NO	NO E.D.P.					
NO	39-01-4122	5559-12P2	12	W/EARS	POSITIVE	94V-2							
NO	39-01-4126	5559-12P3	12	W/O EAR	POSITIVE	94V-2							
NO	39-01-4123	5559-12P2-210	12	W/EARS	POSITIVE	94V-0							
NO	39-01-4127	5559-12P3-210	12	W/O EAR	POSITIVE	94V-0							

0 - OBSOLETE

LEGEND

5559-***P***

BASE NO

CIRCUIT SIZE (04-12)

PLUG

MATERIAL OPTION: SEE NOTE 1

MOUNTING AND LOCK OPTION:
 2=WITH EARS, POSITIVE LOCK
 3=WITHOUT EARS, POSITIVE LOCK
 4=WITH EARS, PASSIVE LOCK
 5=WITHOUT EARS, PASSIVE LOCK

QUALITY SYMBOLS

GENERAL TOLERANCES (UNLESS SPECIFIED)

4 PLACES	±---	±---
3 PLACES	±---	±.010
2 PLACES	±0.25	±.015
1 PLACE	±0.38	±---
0 PLACE	±	±

ANGULAR ±1/2°

DRAFT WHERE APPLICABLE MUST REMAIN WITHIN DIMENSIONS

DIMENSION STYLE IN/MM

SCALE 1:1

DESIGN UNITS METRIC

THIRD ANGLE PROJECTION

MINI-FIT JR. SERIES PLUG (SINGLE ROW)

molex

SD-5559-NLP*

THIS DRAWING CONTAINS INFORMATION THAT IS PROPRIETARY TO MOLEX INCORPORATED AND SHOULD NOT BE USED WITHOUT WRITTEN PERMISSION