

Excellent Integrated System Limited

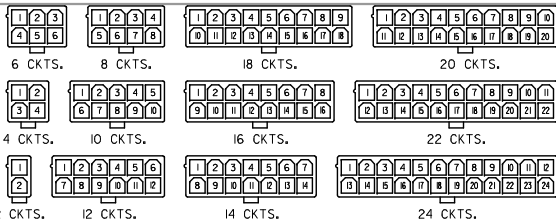
Stocking Distributor

Click to view price, real time Inventory, Delivery & Lifecycle Information:

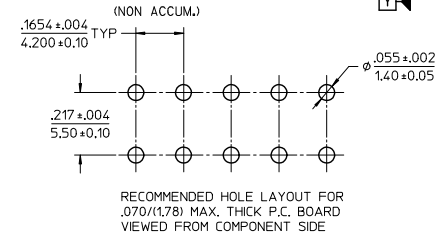
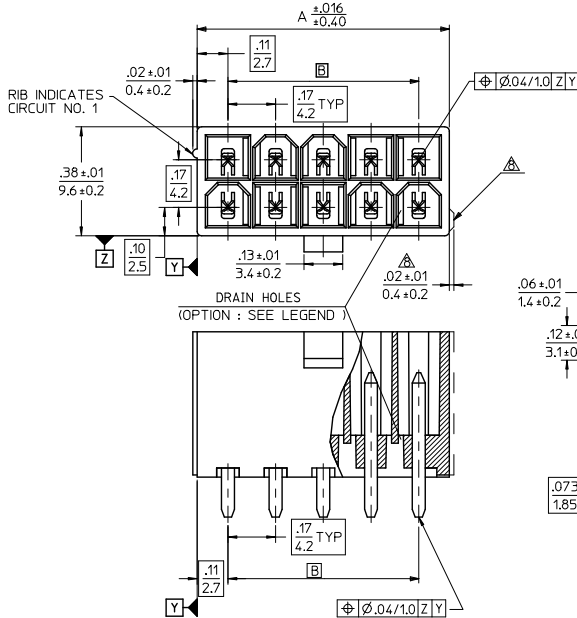
[Molex Connector Corporation](#)
[0039288100](#)

For any questions, you can email us directly:
sales@integrated-circuit.com

| CIRCUIT SIZE | DIM. 'A' | DIM. 'B' |
|--------------|----------------|----------------|
| 2 | .21 (5.4) | — |
| 4 | .38 (9.6) | .17 (4.2) |
| 6 | .54 (13.8) | .33 (8.4) |
| 8 | .71 (18.0) | .50 (12.6) |
| 10 | .87 (22.2) | .66 (16.8) |
| 12 | 1.04 (26.4) | .83 (21.0) |
| 14 | 1.20 (30.6) | .99 (25.2) |
| 16 | 1.37 (34.8) | 1.16 (29.4) |
| 18 | 1.54 (39.0) | 1.32 (33.6) |
| 20 | 1.70 (43.2) | 1.49 (37.8) |
| 22 | 1.87 (47.4) | 1.65 (42.0) |
| 24 | 2.03 (51.6) | 1.82 (46.2) |

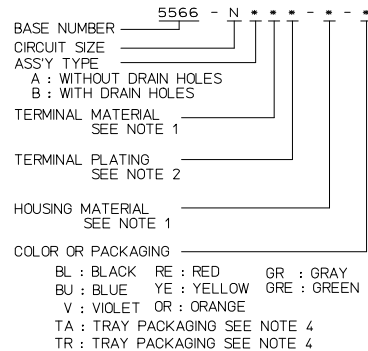


CIRCUIT SIZE LAYOUT



- NOTES:
- MATERIALS:
 - HOUSING:
 - *BLANK*=NYLON 6/6, UL94V-2, COLOR: NATURAL
 - *210*=NYLON 6/6, UL94V-0, COLOR: NATURAL
 - *400*=NYLON 6/6, UL94V-0, COLOR: BLACK
 - TERMINALS:
 - *BLANK* = BRASS
 - *PB* = PHOSPHOR BRONZE
 - TERMINAL PLATING:
 - *BLANK* = BRIGHT TIN 0.00035/(0.00090) MIN. OVER COPPER .00020/(0.00050) MIN. (BRASS)
 - TIN .00035/(0.00090) MIN. REFLOW TREATMENT OR BRIGHT TIN .00035/(0.00090) MIN. (PHOSPHOR BRONZE)
 - *S* = .000100/(0.00254) MIN. BRIGHT TIN OVER .000050/(0.00127) MIN NICKEL
 - *GS2* = .000015/(0.00038) MIN. SELECT GOLD AND .000100/(0.00254) MIN. SELECT MATTE TIN OVER .000050/(0.00127) MIN. NICKEL OVERALL
 - *GS* = .000030/(0.00076) MIN. SELECT GOLD AND .000100/(0.00254) MIN. SELECT MATTE TIN OVER .000050/(0.00127) MIN. NICKEL OVERALL
 - PRODUCT SPECIFICATION: PS-5566-001
 - PACKAGING: *BLANK* = BULK PACKED, *TA* = TRAY PACK PER PK-5566-001, *TR* = TRAY PACK PER PK-5566
 - PART MATES WITH MINI-FIT JR. RECEPTACLE NO. 5557.
 - PART IS NOT DESIGNED FOR CURRENT SHARING.
 - PARTS ARE NOT DESIGNED TO BE MATED OR UN-MATED WHILE CIRCUITS ARE LIVE.
 - ANTI-SHINGLING RIB MAY OR MAY NOT APPEAR ON HOUSINGS.
 - PART CONFORMS TO CLASS 'B' REQUIREMENTS OF COSMETIC SPECIFICATION PS-45499-002.

LEGEND



| | | | | | | | |
|---|--------------------------------------|---------------------------------------|-----------------|--------------------------------------|--------------|---|--|
| ADD PINS EC NO: UCP2014-212 DRAWING NO: 2013/11/13 CHKD: JELL APPR: SMITH | QUALITY SYMBOLS ▽=0 ▽=0 ▽=0 | GENERAL TOLERANCES (UNLESS SPECIFIED) | DIMENSION STYLE | | SCALE | DESIGN UNITS | THIRD ANGLE PROJECTION |
| | | | mm | INCH | 4:1 | METRIC | ☉ |
| REV L7 | DESCRIPTION | 4 PLACES ± --- | 3 PLACES ± --- | 2 PLACES ± 13 | 1 PLACE ± 25 | DRAWN BY H. HIRAMOTO DATE '89/04/03 | |
| | | ANGULAR ± 3° | ± --- | ± 0.05 | ± 0.10 | DATE '94/04/20 | TITLE MINI FIT JR VERTICAL HEADER ASSEMBLIES WITHOUT PEGS |
| DRAFT WHERE APPLICABLE MUST REMAIN WITHIN DIMENSIONS | | MATERIAL NO. SEE TABLE | | APPROVED BY F. SMITH DATE 2012/05/04 | | MOLEX INCORPORATED | |
| | | DOCUMENT NO. SD-5566-002 | | SHEET NO. 1 OF 5 | | THIS DRAWING CONTAINS INFORMATION THAT IS PROPRIETARY TO MOLEX INCORPORATED AND SHOULD NOT BE USED WITHOUT WRITTEN PERMISSION | |

| | | | | | | | | | | | | |
|---------------|----------------|----------------|-----------------|---------------|----------------|--------------|---------------|-------------|--------------|---------|----------|-----------|
| 13 | 12 | 11 | 10 | 9 | 8 | 7 | 6 | 5 | 4 | 3 | 2 | 1 |
| 39-29-5247 | 5566-24APB-210 | 39-30-9245 | 5566-24AGS2-210 | 39-29-6248 | 5566-24AGS-210 | 39-30-6242 | 5566-24AS-210 | 39-28-8240 | 5566-24A-210 | 24 | | |
| ↑ -5227 | ↑ -22APB-210 | ↑ -9225 | ↑ -22AGS2-210 | ↑ -6228 | ↑ -22AGS-210 | ↑ -6222 | ↑ -22AS-210 | ↑ -8220 | ↑ -22A-210 | 22 | | |
| ↑ -5207 | ↑ -20APB-210 | ↑ -9205 | ↑ -20AGS2-210 | ↑ -6208 | ↑ -20AGS-210 | ↑ -6202 | ↑ -20AS-210 | ↑ -8200 | ↑ -20A-210 | 20 | | |
| ↑ -5187 | ↑ -18APB-210 | ↑ -9185 | ↑ -18AGS2-210 | ↑ -6188 | ↑ -18AGS-210 | ↑ -6182 | ↑ -18AS-210 | ↑ -8180 | ↑ -18A-210 | 18 | | |
| ↑ -5167 | ↑ -16APB-210 | ↑ -9165 | ↑ -16AGS2-210 | ↑ -6168 | ↑ -16AGS-210 | ↑ -6162 | ↑ -16AS-210 | ↑ -8160 | ↑ -16A-210 | 16 | | |
| ↑ -5147 | ↑ -14APB-210 | ↑ -9145 | ↑ -14AGS2-210 | ↑ -6148 | ↑ -14AGS-210 | ↑ -6142 | ↑ -14AS-210 | ↑ -8140 | ↑ -14A-210 | 14 | | |
| ↑ -5127 | ↑ -12APB-210 | ↑ -9125 | ↑ -12AGS2-210 | ↑ -6128 | ↑ -12AGS-210 | ↑ -6122 | ↑ -12AS-210 | ↑ -8120 | ↑ -12A-210 | 12 | | |
| ↑ -5107 | ↑ -10APB-210 | ↑ -9105 | ↑ -10AGS2-210 | ↑ -6108 | ↑ -10AGS-210 | ↑ -6102 | ↑ -10AS-210 | ↑ -8100 | ↑ -10A-210 | 10 | | |
| ↑ -5087 | ↑ -08APB-210 | ↑ -9085 | ↑ -08AGS2-210 | ↑ -6088 | ↑ -08AGS-210 | ↑ -6082 | ↑ -08AS-210 | ↑ -8080 | ↑ -08A-210 | 8 | | |
| ↑ -5067 | ↑ -06APB-210 | ↑ -9065 | ↑ -06AGS2-210 | ↑ -6068 | ↑ -06AGS-210 | ↑ -6062 | ↑ -06AS-210 | ↑ -8060 | ↑ -06A-210 | 6 | | |
| ↓ -5047 | ↓ -04APB-210 | ↓ -9045 | ↓ -04AGS2-210 | ↓ -6048 | ↓ -04AGS-210 | ↓ -6042 | ↓ -04AS-210 | ↓ -8040 | ↓ -04A-210 | 4 | | |
| 39-29-5027 | 5566-02APB-210 | 39-30-9025 | 5566-02AGS2-210 | 39-29-6028 | 5566-02AGS-210 | 39-30-6022 | 5566-02AS-210 | 39-28-8020 | 5566-02A-210 | 2 | | |
| EDP NO. | ENG. NO. | EDP NO. | ENG. NO. | EDP NO. | ENG. NO. | EDP NO. | ENG. NO. | EDP NO. | ENG. NO. | EDP NO. | ENG. NO. | CKT. SIZE |
| 5566-NAPB-210 | | 5566-NAGS2-210 | | 5566-NAGS-210 | | 5566-NAS-210 | | 5566-NA-210 | | | | |
| 39-29-5246 | 5566-24APB | 39-30-9244 | 5566-24AGS2 | 39-29-0243 | 5566-24AGS | 39-30-6241 | 5566-24AS | 39-28-1243 | 5566-24A | 24 | | |
| ↑ -5226 | ↑ -22APB | ↑ -9224 | ↑ -22AGS2 | ↑ -0223 | ↑ -22AGS | ↑ -6221 | ↑ -22AS | ↑ -1223 | ↑ -22A | 22 | | |
| ↑ -5206 | ↑ -20APB | ↑ -9204 | ↑ -20AGS2 | ↑ -0203 | ↑ -20AGS | ↑ -6201 | ↑ -20AS | ↑ -1203 | ↑ -20A | 20 | | |
| ↑ -5186 | ↑ -18APB | ↑ -9184 | ↑ -18AGS2 | ↑ -0183 | ↑ -18AGS | ↑ -6181 | ↑ -18AS | ↑ -1183 | ↑ -18A | 18 | | |
| ↑ -5166 | ↑ -16APB | ↑ -9164 | ↑ -16AGS2 | ↑ -0163 | ↑ -16AGS | ↑ -6161 | ↑ -16AS | ↑ -1163 | ↑ -16A | 16 | | |
| ↑ -5146 | ↑ -14APB | ↑ -9144 | ↑ -14AGS2 | ↑ -0143 | ↑ -14AGS | ↑ -6141 | ↑ -14AS | ↑ -1143 | ↑ -14A | 14 | | |
| ↑ -5126 | ↑ -12APB | ↑ -9124 | ↑ -12AGS2 | ↑ -0123 | ↑ -12AGS | ↑ -6121 | ↑ -12AS | ↑ -1123 | ↑ -12A | 12 | | |
| ↑ -5106 | ↑ -10APB | ↑ -9104 | ↑ -10AGS2 | ↑ -0103 | ↑ -10AGS | ↑ -6101 | ↑ -10AS | ↑ -1103 | ↑ -10A | 10 | | |
| ↑ -5086 | ↑ -08APB | ↑ -9084 | ↑ -08AGS2 | ↑ -0083 | ↑ -08AGS | ↑ -6081 | ↑ -08AS | ↑ -1083 | ↑ -08A | 8 | | |
| ↑ -5066 | ↑ -06APB | ↑ -9064 | ↑ -06AGS2 | ↑ -0063 | ↑ -06AGS | ↑ -6061 | ↑ -06AS | ↑ -1063 | ↑ -06A | 6 | | |
| ↓ -5046 | ↓ -04APB | ↓ -9044 | ↓ -04AGS2 | ↓ -0043 | ↓ -04AGS | ↓ -6041 | ↓ -04AS | ↓ -1043 | ↓ -04A | 4 | | |
| 39-29-5026 | 5566-02APB | 39-30-9024 | 5566-02AGS2 | 39-29-0023 | 5566-02AGS | 39-30-6021 | 5566-02AS | 39-28-1023 | 5566-02A | 2 | | |
| EDP NO. | ENG. NO. | EDP NO. | ENG. NO. | EDP NO. | ENG. NO. | EDP NO. | ENG. NO. | EDP NO. | ENG. NO. | EDP NO. | ENG. NO. | CKT. SIZE |
| 5566-NAPB | | 5566-NAGS2 | | 5566-NAGS | | 5566-NAS | | 5566-NA | | | | |

PARTS WITH OUT DRAIN HOLES

| | | | | | | | | | |
|---|---------------------|---------------------------------------|------------|---|-----------|--|--------------|------------------------|--|
| SEE SHEET 1 EC NO: UCP2014-212 DRAWING NO: 2013/11/13 CHKD: BELL APPR: SMITH DATE: 2013/11/21 | QUALITY SYMBOLS | GENERAL TOLERANCES (UNLESS SPECIFIED) | | DIMENSION STYLE | | SCALE | DESIGN UNITS | THIRD ANGLE PROJECTION | |
| | | mm | INCH | IN/MM | | 1:1 | METRIC | | |
| | | 4 PLACES ± --- ± --- | | DRAWN BY | DATE | TITLE MINI FIT JR VERTICAL HEADER ASSEMBLIES WITHOUT PEGS | | | |
| | | 3 PLACES ± --- ± .005 | | H.HIRAMOTO | '89/04/03 | | | | |
| 2 PLACES ± .13 ± .010 | | CHECKED BY | DATE | MOLEX INCORPORATED | | | | | |
| 1 PLACE ± .25 ± --- | | M. FUKUSHIMA | '94/04/20 | | | | | | |
| ANGULAR ± 3° | | APPROVED BY | DATE | MATERIAL NO. DOCUMENT NO. SHEET NO. SEE TABLE SD-5566-002 2 OF 5 | | | | | |
| DRAFT WHERE APPLICABLE MUST REMAIN WITHIN DIMENSIONS | | F. SMITH | 2012/05/04 | | | | | | |
| THIS DRAWING CONTAINS INFORMATION THAT IS PROPRIETARY TO MOLEX INCORPORATED AND SHOULD NOT BE USED WITHOUT WRITTEN PERMISSION | | | | | | | | | |

[TRAY PACKED PART NUMBERS]

| | | | | | | | | | |
|---------------------------|------------------|-------------------|-------------------|-----------------|----------------|-----------------|------------|-------------|-----------|
| PARTS WITHOUT DRAIN HOLES | | | | | 39-53-9249 | 5566-24A-210-TA | 39-53-9248 | 5566-24A-TA | 24 |
| | | | | | | -22A-210-TA | -9228 | -22A-TA | 22 |
| | | | | | | -20A-210-TA | -9208 | -20A-TA | 20 |
| | | | 39-34-1180 | 5566-18A-210-TR | | -18A-210-TA | -9188 | -18A-TA | 18 |
| | | | | | | -16A-210-TA | -9168 | -16A-TA | 16 |
| | | | | | | -14A-210-TA | -9148 | -14A-TA | 14 |
| | | | | | | -12A-210-TA | -9128 | -12A-TA | 12 |
| | | | | | | -10A-210-TA | -9108 | -10A-TA | 10 |
| | | | | | | -08A-210-TA | -9088 | -08A-TA | 8 |
| | | 46999-0630 | 5566-06AGS2-BL-TA | | | -06A-210-TA | -9068 | -06A-TA | 6 |
| | 46999-0629 | 5566-04AGS2-BL-TA | | | -04A-210-TA | -9048 | -04A-TA | 4 | |
| | EDP NO. | ENG. NO. | EDP NO. | ENG. NO. | EDP NO. | ENG. NO. | EDP NO. | ENG. NO. | CKT. SIZE |
| | 5566-NAGS2-BL-TA | | 5566-NA-210-TR | | 5566-NA-210-TA | | 5566-NA-TA | | |

| | | | | | | | | | |
|---|----|-------------|----------------------|---------------------------------------|-------------------------------------|--|--------------|------------------------|--|
| SEE SHEET 1 EC NO: UCP204-212 DRAWING NO: 2013/11/13 CHKD: BELL APPR: SMITH | L7 | DESCRIPTION | QUALITY SYMBOLS | GENERAL TOLERANCES (UNLESS SPECIFIED) | DIMENSION STYLE | SCALE | DESIGN UNITS | THIRD ANGLE PROJECTION | |
| | | | ▽=0 | mm INCH | IN/MM | 1:1 | METRIC | ☉ | |
| | | | ▽=0 | 4 PLACES ± --- ± --- | DRAWN BY DATE | TITLE MINI FIT JR VERTICAL HEADER ASSEMBLIES WITHOUT PEGS | | | |
| | | | ▽=0 | 3 PLACES ± --- ± .005 | H.HIRAMOTO '89/04/03 | | | | |
| | | | 2 PLACES ± 13 ± .010 | CHECKED BY DATE | MOLEX INCORPORATED | | | | |
| | | | 1 PLACE ± 25 ± --- | M. FUKUSHIMA '94/04/20 | | | | | |
| | | | ANGULAR ± 3 ° | APPROVED BY DATE | MATERIAL NO. DOCUMENT NO. SHEET NO. | | | | |
| | | | | F. SMITH 2012/05/04 | | | | | |
| DRAFT WHERE APPLICABLE MUST REMAIN WITHIN DIMENSIONS | | | | SEE TABLE | SD-5566-002 | | 5 OF 5 | | |
| THIS DRAWING CONTAINS INFORMATION THAT IS PROPRIETARY TO MOLEX INCORPORATED AND SHOULD NOT BE USED WITHOUT WRITTEN PERMISSION | | | | | | | | | |