

Excellent Integrated System Limited

Stocking Distributor

Click to view price, real time Inventory, Delivery & Lifecycle Information:

[CEL \(California Eastern Laboratories\)](#)
[UPC3217GV-EVAL](#)

For any questions, you can email us directly:

sales@integrated-circuit.com



5 V AGC AMPLIFIER + VIDEO AMPLIFIER

UPC3217GV UPC3218GV

FEATURES

- **ON-CHIP LOW DISTORTION AMPLIFIER:**
IIP3 = -4 dBm at minimum gain
- **WIDE AGC DYNAMIC RANGE:**
GCR = 53 dB TYP
- **ON-CHIP VIDEO AMPLIFIER:**
VOUT = 1.25 VP-P at single-ended output
- **SUPPLY VOLTAGE:**
VCC = 5 V
- **PACKAGED IN 8 PIN SSOP SUITABLE FOR SURFACE MOUNTING**

DESCRIPTION

NEC's UPC3217GV and UPC3218GV are Silicon Monolithic ICs designed for use as AGC amplifiers for digital CATV, cable modems and IP telephony systems. These ICs consist of a two stage gain control amplifier and a fixed video gain amplifier. The devices provide a differential input and differential output for noise performance, which eliminates shielding requirements.

The package is 8-pin SSOP (Shrink Small Outline Package) suitable for surface mount.

These ICs are manufactured using NEC's 10 GHz fr NESAT™ II AL silicon bipolar process. This process uses silicon nitride passivation film. This material can protect chip surface from external pollution and prevent corrosion/migration. Thus, these ICs have excellent performance, uniformity and reliability.

NEC's stringent quality assurance and test procedures ensure the highest reliability and performance.

ELECTRICAL CHARACTERISTICS

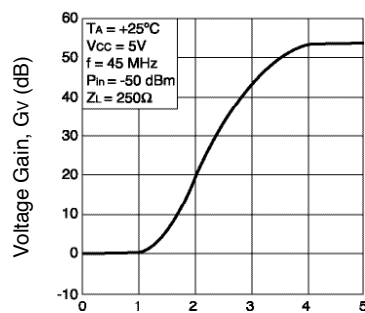
(TA = 25°C, VCC = 5 V, ZS = 1 K Ω, ZL = 240 Ω, fIN = 45 MHz, Unless otherwise specified)

PART NUMBER PACKAGE OUTLINE		UPC3217GV S08				UPC3218GV S08		
SYMBOLS	PARAMETERS AND CONDITIONS	UNITS	MIN	TYP	MAX	MIN	TYP	MAX
DC Characteristics								
ICC	Circuit Current (no input signal)	mA	15	23	34	15	23	34
RF Characteristics								
BW	Frequency Bandwidth, VAGC* = 4.5 V ¹	MHz		100			100	
GMAX	Maximum Gain, VAGC* = 4.5 V	dB	50	53	56	60	63	66
GMIN	Minimum Gain, VAGC* = 0.5 V	dB	-4.5	0	3.5	4.5	10	13.5
GCR	Gain Control Range, VAGC* = 0.5 to 4.5 V	dB	46.5	53		46.5	53	
NFAGC	Noise Figure, VAGC* = 4.5 V at MAX Gain	dB		6.5	8.0		3.5	4.5
VOUT	Output Voltage, Single Ended Output	VP-P		1.25			1.25	
IM3	Third Order Intermodulation Distortion, fIN1 = 44 MHz, fIN2 = 45 MHz, VIN = 30 dBmV per tone ²	dBc		55			55	

Note:

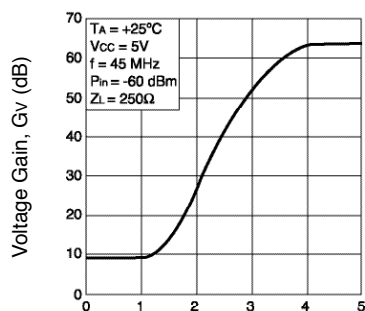
1. -3dB with respect to 10 MHz gain
2. VAGC is adjusted to establish VOUT = 1.25 VP-P per tone

VOLTAGE GAIN vs.
AUTOMATIC GAIN CONTROL VOLTAGE*



UPC3217GV

Automatic Gain Control Voltage, VAGC* (V)



UPC3218GV

Automatic Gain Control Voltage, VAGC* (V)

APPLICATIONS

- Digital CATV
- Cable modem receivers
- IP Telephony Receivers

California Eastern Laboratories

* VAGC shown as applied in the evaluation circuit (see page 5) through a resistive bridge (voltage divider).
Actual voltage range on the pin of the IC is 0 to 3 V.

UPC3217GV, UPC3218GV

ABSOLUTE MAXIMUM RATINGS¹

(T_A = 25°C, unless otherwise specified)

SYMBOLS	PARAMETERS	UNITS	RATINGS
V _{CC}	Supply Voltage	V	6.0
P _D	Power Dissipation ² , T _A = 85°C	mW	250
T _{OP1}	Operating Ambient Temp.	°C	-40 to +85
T _{STG}	Storage Temperature	°C	-50 to +150

Notes:

1. Operation in excess of any one of these parameters may result

in permanent damage.

2. Mounted on a 50 x 50 x 1.6 mm epoxy glass PWB, with copper patterning on both sides.

RECOMMENDED OPERATING CONDITIONS

SYMBOL	PARAMETER	UNITS	MIN	TYP	MAX
V _{CC}	Supply Voltage	V	4.5	5.0	5.5
T _A	Operating Ambient Temp. ¹	°C	-40	+25	+85
V _{AGC} ²	Gain Control Voltage Range	V	0	—	3.0
V _{IN}	Video Input Signal Range	dBmV	8		30

Note:

1. V_{CC} = 4.5 to 5.5 V

2. AGC range at pin 4 of the IC

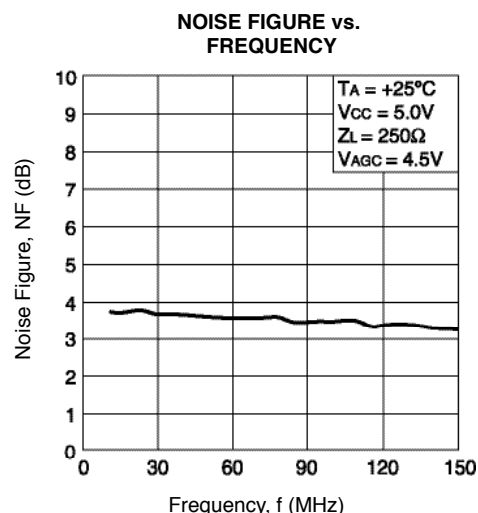
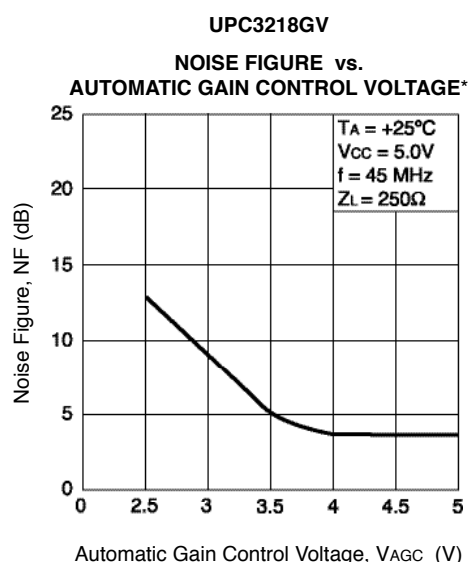
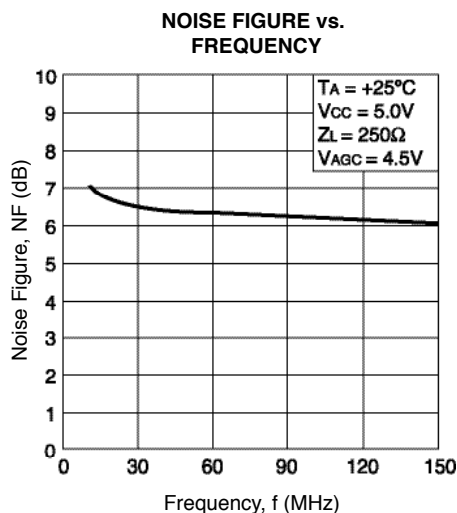
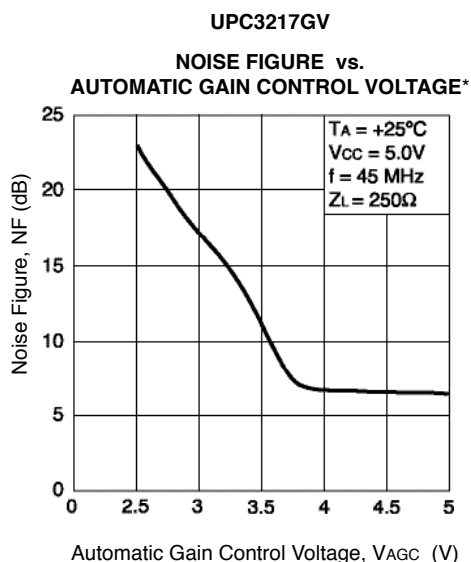
ORDERING INFORMATION

PART NUMBER	QUANTITY
UPC3217GV-E1-A	1 kp/Reel
UPC3218GV-E1-A	1 kp/Reel

Note:

Embossed tape 8 mm wide. Pin 1 indicates pull-out direction of tape.

TYPICAL PERFORMANCE CURVES (T_A = 25°C, unless otherwise specified)



* V_{AGC} shown as applied in the evaluation circuit (see page 5) through a resistive bridge (voltage divider).

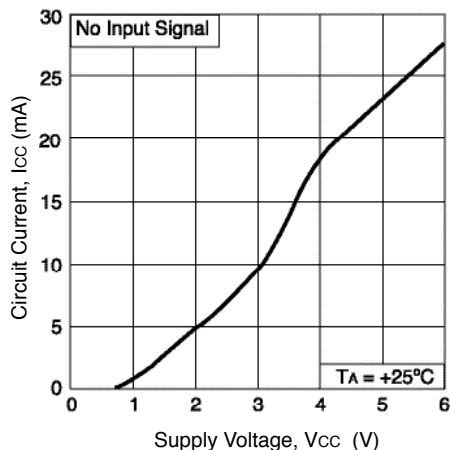
Actual voltage range on the pin of the IC is 0 to 3 V.

UPC3217GV, UPC3218GV

TYPICAL PERFORMANCE CURVES ($T_A = 25^\circ\text{C}$, unless otherwise specified)

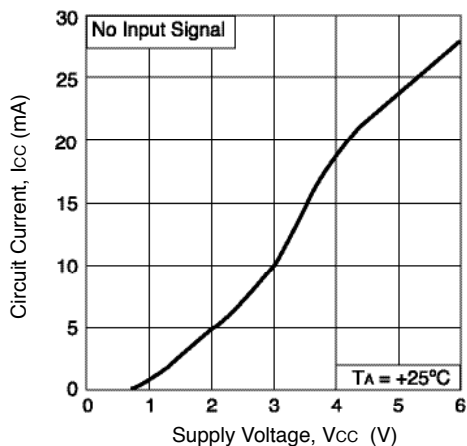
UPC3217GV

CIRCUIT CURRENT vs.
SUPPLY VOLTAGE

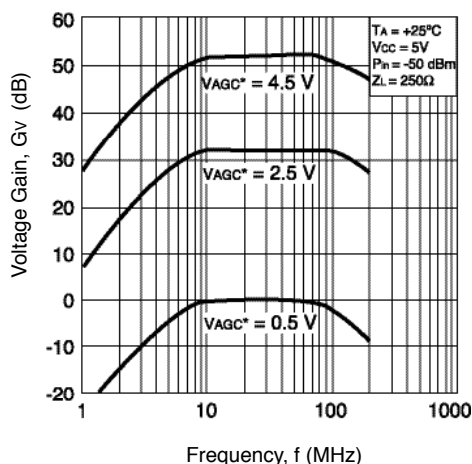


UPC3218GV

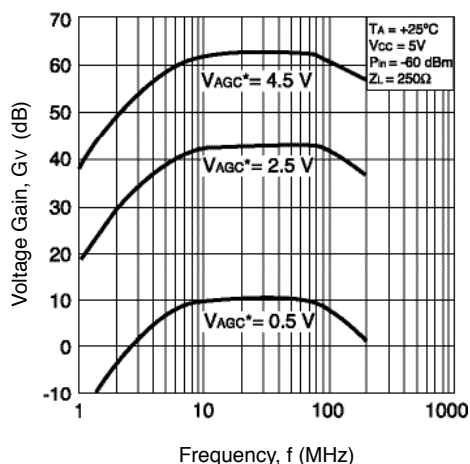
CIRCUIT CURRENT vs.
SUPPLY VOLTAGE



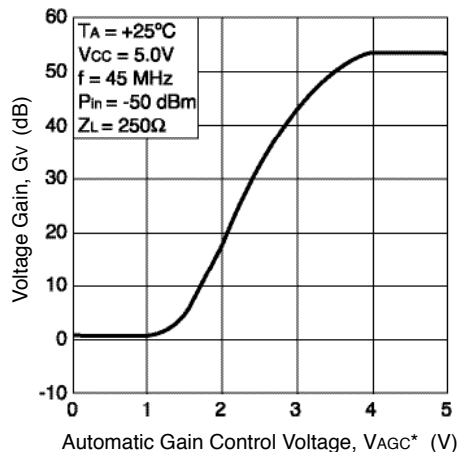
VOLTAGE GAIN vs.
FREQUENCY



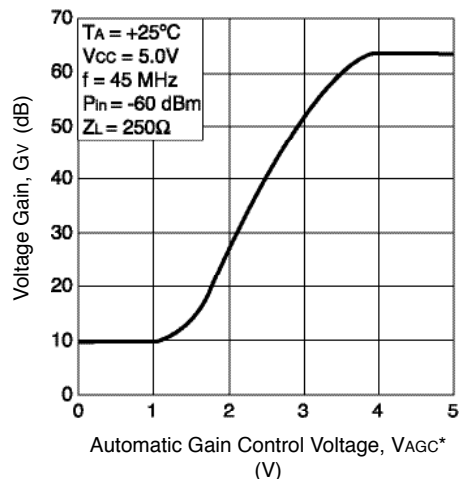
VOLTAGE GAIN vs.
FREQUENCY



VOLTAGE GAIN vs.
AUTOMATIC GAIN CONTROL VOLTAGE*



VOLTAGE GAIN vs.
AUTOMATIC GAIN CONTROL VOLTAGE*

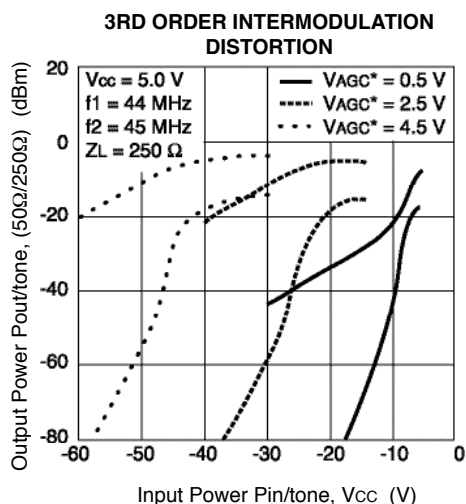


* V_{AGC} shown as applied in the evaluation circuit (see page 5) through a resistive bridge (voltage divider).
Actual voltage range on the pin of the IC is 0 to 3 V.

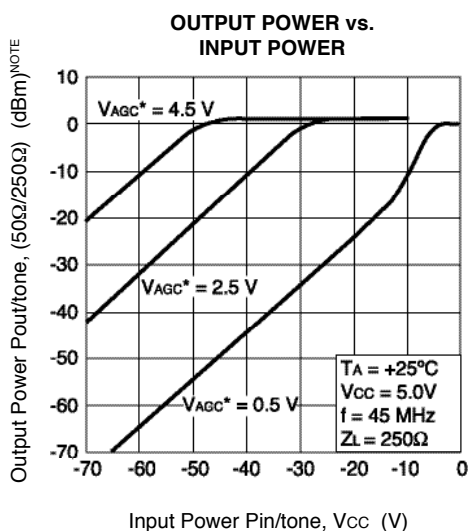
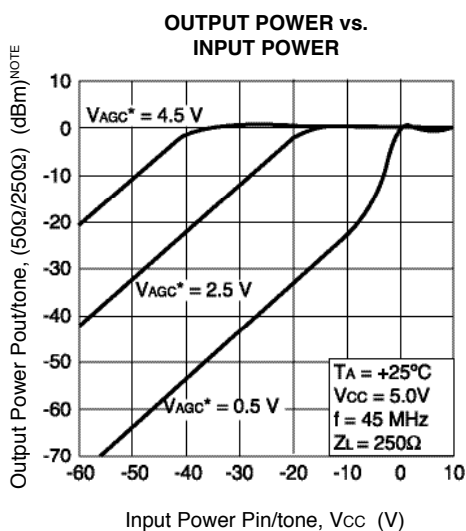
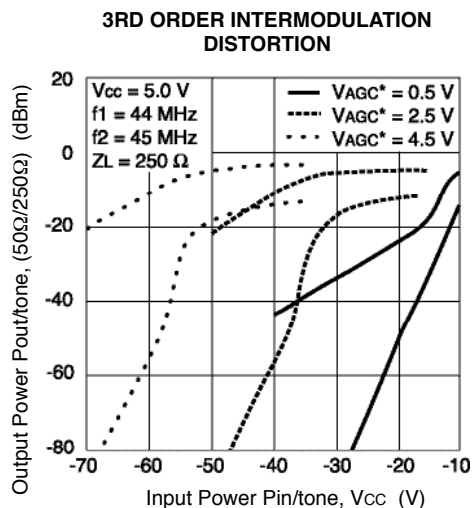
UPC3217GV, UPC3218GV

TYPICAL PERFORMANCE CURVES, cont. (TA = 25°C, unless otherwise specified)

UPC3217GV



UPC3218GV



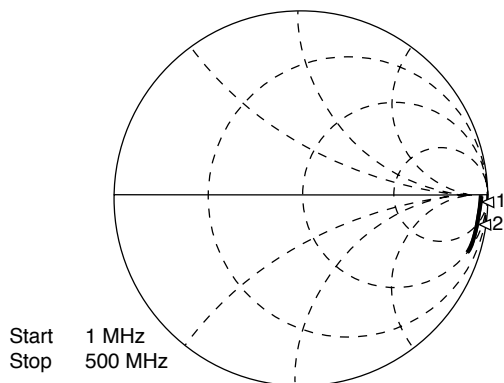
NOTE: Measurement value with spectrum analyzer.

* VAGC shown as applied in the evaluation circuit (see page 5) through a resistive bridge (voltage divider).
Actual voltage range on the pin of the IC is 0 to 3 V.

UPC3217GV, UPC3218GV

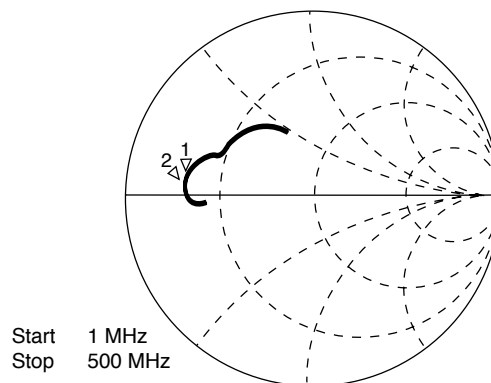
TYPICAL SCATTERING PARAMETERS

S11-FREQUENCY



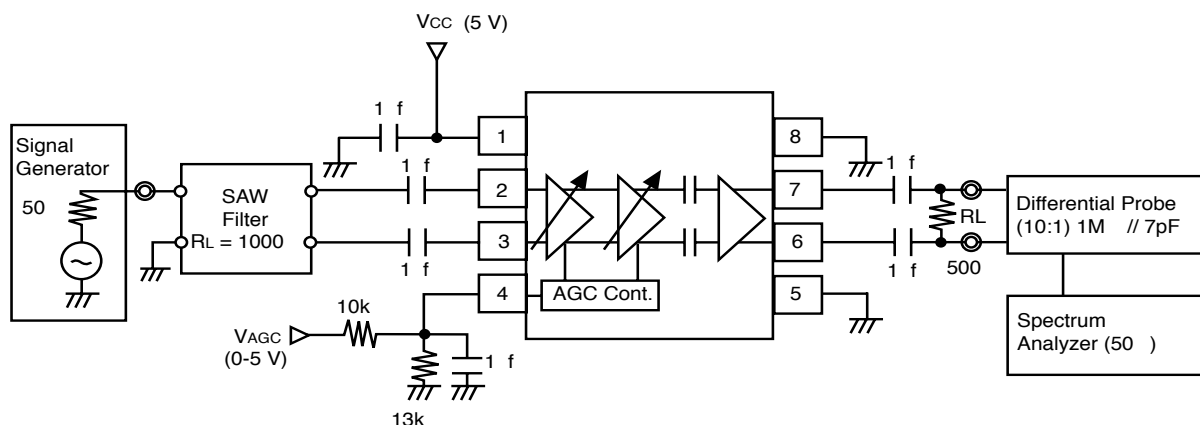
Marker 1	45 MHz
UPC3217GV	1.339k-j 1.556 k Ω
Marker 2	45 MHz
UPC3218GV	1.024k-j 1.124 k Ω

S22-FREQUENCY

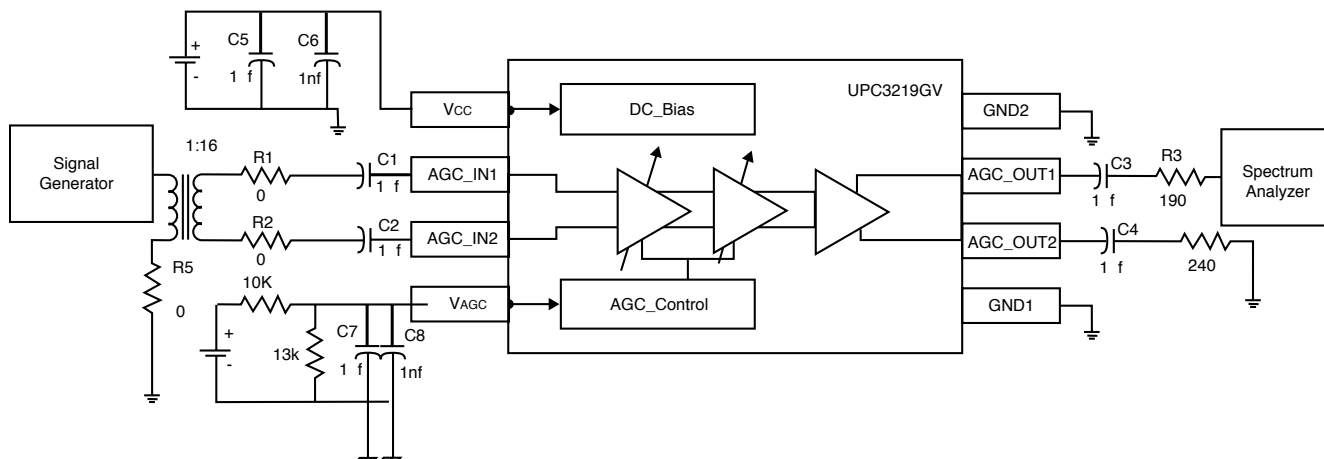


Marker 1	45 MHz
UPC3217GV	9.511 + j 3.869 Ω
Marker 2	45 MHz
UPC3218GV	9.493 + j 4.317 Ω

SYSTEM APPLICATION EXAMPLE

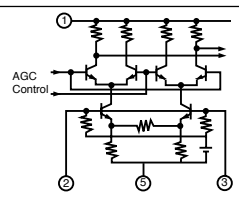
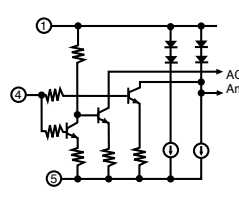
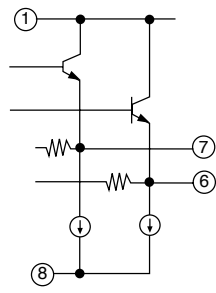


EVALUATION BOARD SCHEMATIC AND TEST



UPC3217GV, UPC3218GV

PIN EXPLANATIONS (UPC3217GV, UPC3218GV common)

Pin No.	Name	Applied Voltage (v)	Pin Voltage (v) ¹	Description	Internal Equivalent Circuit
1	V _{CC}	4.5 to 5.5		Power supply pin. This pin should be externally equipped with bypass capacitor to minimize ground impedance.	
2	INPUT1		1.45	Signal input pins of AGC amplifier.	
3	INPUT2		1.45		
4	V _{AGC}	0 to 3.0 V _{CC}		Gain control pin. This pin's bias govern the AGC output level. Minimum Gain at V _{AGC} = 0.5 V Maximum Gain at V _{AGC} = 4.5 V Recommended to use a 0 to 5 V AGC range for the system and divide this voltage through a resistive bridge (see evaluation board). This helps make the AGC slope less steep.	
5	GND 2	0		Ground pin. This pin should be connected to system ground with minimum inductance. Ground pattern on the board should be formed as wide as possible.	
6	OUTPUT2		2.2	Signal output pins of video amplifier	
7	OUTPUT1		2.2		
8	GND 1	0		Ground pin. This pin should be connected to system ground with minimum inductance. Ground pattern on the board should be formed as wide as possible. All ground pins must be connected together with wide ground pattern to decrease impedance difference.	

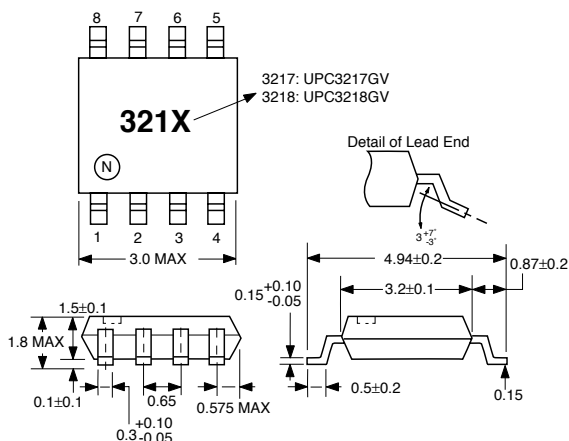
Note:

1. Pin is measured at V_{CC} = 5 V

UPC3217GV, UPC3218GV

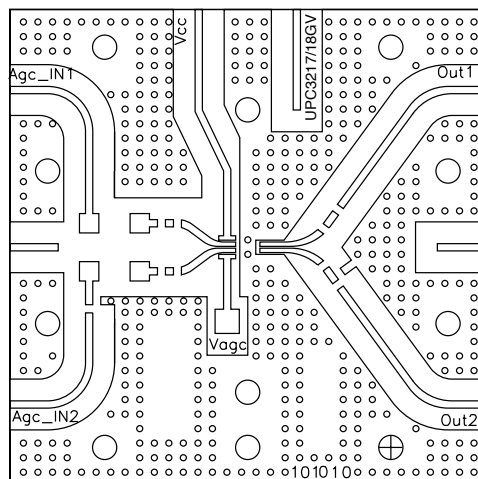
OUTLINE DIMENSIONS (Units in mm)

PACKAGE OUTLINE S08



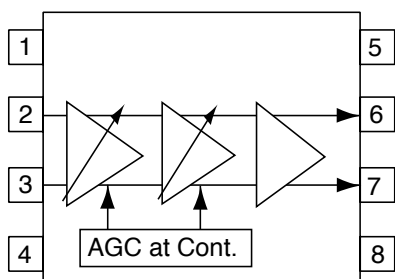
All dimensions are typical unless specified otherwise.

EVALUATION BOARD

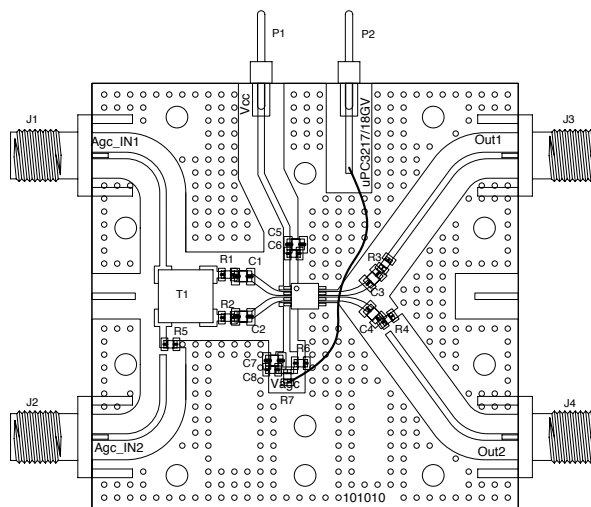


EVALUATION BOARD ASSEMBLY

INTERNAL BLOCK DIAGRAM



T1	Transformer 4:1 Coilcraft
R7	0603 10K OHM RES ROHM
R6	0603 13K OHM RES ROHM
R4	0603 240 OHM RES ROHM
R3	0603 191 OHM RES ROHM
R1,R2,R5	0603 0 OHM RES ROHM
C6, C8	0603 1000pF CAP ROHM
C1-C5, C7	0805 1uF CAP ROHM
U1	IC NEC, UPC3217/18GV IC NEC



Life Support Applications

These NEC products are not intended for use in life support devices, appliances, or systems where the malfunction of these products can reasonably be expected to result in personal injury. The customers of CEL using or selling these products for use in such applications do so at their own risk and agree to fully indemnify CEL for all damages resulting from such improper use or sale.

CEL California Eastern Laboratories, Your source for NEC RF, Microwave, Optoelectronic, and Fiber Optic Semiconductor Devices.

4590 Patrick Henry Drive • Santa Clara, CA 95054-1817 • (408) 919-2500 • FAX (408) 988-0279 • www.cel.com

DATA SUBJECT TO CHANGE WITHOUT NOTICE

05/14/2008

NEC

A Business Partner of NEC Electronics Corporation.



4590 Patrick Henry Drive
 Santa Clara, CA 95054-1817
 Telephone: (408) 919-2500
 Facsimile: (408) 988-0279

Subject: Compliance with EU Directives

CEL certifies, to its knowledge, that semiconductor and laser products detailed below are compliant with the requirements of European Union (EU) Directive 2002/95/EC Restriction on Use of Hazardous Substances in electrical and electronic equipment (RoHS) and the requirements of EU Directive 2003/11/EC Restriction on Penta and Octa BDE.

CEL Pb-free products have the same base part number with a suffix added. The suffix –A indicates that the device is Pb-free. The –AZ suffix is used to designate devices containing Pb which are exempted from the requirement of RoHS directive (*). In all cases the devices have Pb-free terminals. All devices with these suffixes meet the requirements of the RoHS directive.

This status is based on CEL's understanding of the EU Directives and knowledge of the materials that go into its products as of the date of disclosure of this information.

Restricted Substance per RoHS	Concentration Limit per RoHS (values are not yet fixed)	Concentration contained in CEL devices	
		-A	-AZ
Lead (Pb)	< 1000 PPM	Not Detected	(*)
Mercury	< 1000 PPM	Not Detected	
Cadmium	< 100 PPM	Not Detected	
Hexavalent Chromium	< 1000 PPM	Not Detected	
PBB	< 1000 PPM	Not Detected	
PBDE	< 1000 PPM	Not Detected	

If you should have any additional questions regarding our devices and compliance to environmental standards, please do not hesitate to contact your local representative.

Important Information and Disclaimer: Information provided by CEL on its website or in other communications concerning the substance content of its products represents knowledge and belief as of the date that it is provided. CEL bases its knowledge and belief on information provided by third parties and makes no representation or warranty as to the accuracy of such information. Efforts are underway to better integrate information from third parties. CEL has taken and continues to take reasonable steps to provide representative and accurate information but may not have conducted destructive testing or chemical analysis on incoming materials and chemicals. CEL and CEL suppliers consider certain information to be proprietary, and thus CAS numbers and other limited information may not be available for release.

In no event shall CEL's liability arising out of such information exceed the total purchase price of the CEL part(s) at issue sold by CEL to customer on an annual basis.

See CEL Terms and Conditions for additional clarification of warranties and liability.