

## Excellent Integrated System Limited

Stocking Distributor

Click to view price, real time Inventory, Delivery & Lifecycle Information:

[Fairchild Semiconductor](#)  
[74VHC4066M](#)

For any questions, you can email us directly:

[sales@integrated-circuit.com](mailto:sales@integrated-circuit.com)



April 1994  
Revised February 2005

## 74VHC4066 Quad Analog Switch

### General Description

These devices are digitally controlled analog switches utilizing advanced silicon-gate CMOS technology. These switches have low "on" resistance and low "off" leakages. They are bidirectional switches, thus any analog input may be used as an output and visa-versa. Also the 4066 switches contain linearization circuitry which lowers the "on" resistance and increases switch linearity. The 4066 devices allow control of up to 12V (peak) analog signals with digital control signals of the same range. Each switch has its own control input which disables each switch when low. All analog inputs and outputs and digital inputs are protected from electrostatic damage by diodes to  $V_{CC}$  and ground.

### Features

- Typical switch enable time: 15 ns
- Wide analog input voltage range: 0–12V
- Low "on" resistance: 30 typ. ('4066)
- Low quiescent current: 80  $\mu$ A maximum (74VHC)
- Matched switch characteristics
- Individual switch controls
- Pin and function compatible with the 74HC4066

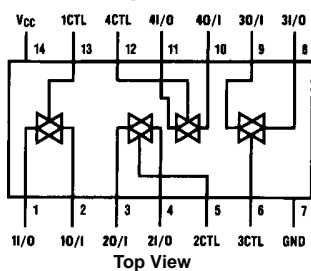
### Ordering Code:

Order Number	Package Number	Package Description
74VHC4066M	M14A	14-Lead Small Outline Integrated Circuit (SOIC), JEDEC MS-012, 0.150" Narrow
74VHC4066MX_NL (Note 1)	M14A	Pb-Free 14-Lead Small Outline Integrated Circuit (SOIC), JEDEC MS-012, 0.150" Narrow
74VHC4066MTC	MTC14	14-Lead Thin Shrink Small Outline Package (TSSOP), JEDEC MO-153, 4.4mm Wide
74VHC4066MTCX_NL (Note 1)	MTC14	Pb-Free 14-Lead Thin Shrink Small Outline Package (TSSOP), JEDEC MO-153, 4.4mm Wide
74VHC4066N	N14A	14-Lead Plastic Dual-In-Line Package (PDIP), JEDEC MS-001, 0.300" Wide

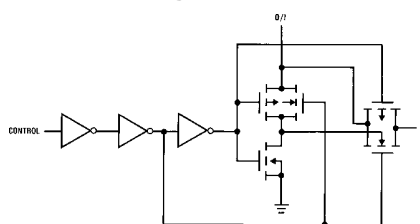
Surface mount packages are also available on Tape and Reel. Specify by appending the suffix letter "X" to the ordering code.

**Note 1:** "\_NL" indicates Pb-Free package (per JEDEC S-STD-020B). Device available in Tape and Reel only.

### Connection Diagram



### Schematic Diagram



### Truth Table

Input	Switch
CTL	I/O–O/I
L	"OFF"
H	"ON"

74VHC4066

Absolute Maximum Ratings (Note 2)		Recommended Operating Conditions		
Supply Voltage ( $V_{CC}$ )	-0.5 to +15V	Min	Max	Units
DC Control Input Voltage ( $V_{IN}$ )	-1.5 to $V_{CC} + 1.5V$	2	12	V
DC Switch I/O Voltage ( $V_{IO}$ )	$V_{EE} - 0.5$ to $V_{CC} + 0.5V$	0	$V_{CC}$	V
Clamp Diode Current ( $I_{IK}, I_{OK}$ )	$\pm 20$ mA	( $V_{IN}, V_{OUT}$ )		
DC Output Current, per pin ( $I_{OUT}$ )	$\pm 25$ mA	Operating Temperature Range ( $T_A$ )		
DC $V_{CC}$ or GND Current, per pin ( $I_{CC}$ )	$\pm 50$ mA	-40	+85	$^{\circ}C$
Storage Temperature Range ( $T_{STG}$ )	-65 $^{\circ}C$ to +150 $^{\circ}C$	Input Rise or Fall Times ( $t_r, t_f$ )		
Power Dissipation ( $P_D$ ) (Note 4)	600 mW	$V_{CC} = 2.0V$		
S.O. Package only	500 mW	$V_{CC} = 4.5V$		
Lead Temperature ( $T_L$ )	260 $^{\circ}C$	$V_{CC} = 9.0V$		
(Soldering 10 seconds)		<p><b>Note 2:</b> Absolute Maximum Ratings are those values beyond which damage to the device may occur.</p> <p><b>Note 3:</b> Unless otherwise specified all voltages are referenced to ground.</p> <p><b>Note 4:</b> Power Dissipation temperature derating — plastic "N" package: — 12 mW/<math>^{\circ}C</math> from 65<math>^{\circ}C</math> to 85<math>^{\circ}C</math>.</p>		

DC Electrical Characteristics (Note 5)								
Symbol	Parameter	Conditions	$V_{CC}$	$T_A = 25^{\circ}C$		$T_A = -40$ to $85^{\circ}C$		Units
				Typ	Guaranteed Limits			
$V_{IH}$	Minimum HIGH Level Input Voltage		2.0V		1.5	1.5	V	
			4.5V		3.15	3.15	V	
			9.0V		6.3	5.3	V	
			12.0V		8.4	8.4	V	
$V_{IL}$	Maximum LOW Level Input Voltage		2.0V		0.5	0.5	V	
			4.5V		1.35	1.35	V	
			9.0V		2.7	2.7	V	
			12.0V		3.6	3.6	V	
$R_{ON}$	Maximum "ON" Resistance See (Note 6)	$V_{CTL} = V_{IH}, I_S = 2.0$ mA $V_{IS} = V_{CC}$ to GND (Figure 1)	4.5V	100	170	200	$\Omega$	
			9.0V	50	85	105	$\Omega$	
			12.0V	30	70	85	$\Omega$	
			2.0V	120	180	215	$\Omega$	
		$V_{CTL} = V_{IH}, I_S = 2.0$ mA $V_{IS} = V_{CC}$ or GND (Figure 1)	4.5V	50	80	100	$\Omega$	
			9.0V	35	60	75	$\Omega$	
			12.0V	20	40	60	$\Omega$	
			$R_{ON}$	Maximum "ON" Resistance Matching	$V_{CTL} = V_{IH}$ $V_{IS} = V_{CC}$ to GND	4.5V	10	15
9.0V	5	10				15	$\Omega$	
12.0V	5	10				15	$\Omega$	
$I_{IN}$	Maximum Control Input Current	$V_{IN} = V_{CC}$ or GND $V_{CC} = 2 - 6V$			$\pm 0.05$	$\pm 0.5$	$\mu A$	
$I_{IZ}$	Maximum Switch "OFF" Leakage Current	$V_{OS} = V_{CC}$ or GND $V_{IS} = GND$ or $V_{CC}$ $V_{CTL} = V_{IL}$ (Figure 2)	6.0V	10	$\pm 60$	$\pm 600$	nA	
			9.0V	15	$\pm 80$	$\pm 800$	nA	
			12.0V	20	$\pm 100$	$\pm 1000$	nA	
$I_{IZ}$	Maximum Switch "ON" Leakage Current	$V_{IS} = V_{CC}$ to GND $V_{CTL} = V_{IH}$ $V_{OS} = OPEN$ (Figure 3)	6.0V	10	$\pm 40$	$\pm 150$	nA	
			9.0V	15	$\pm 50$	$\pm 200$	nA	
			12.0V	20	$\pm 60$	$\pm 300$	nA	
$I_{CC}$	Maximum Quiescent Supply Current	$V_{IN} = V_{CC}$ or GND $I_{OUT} = 0 \mu A$	6.0V		1.0	10	$\mu A$	
			9.0V		2.0	20	$\mu A$	
			12.0V		4.0	40	$\mu A$	

**Note 5:** For a power supply of 5V  $\pm$  10% the worst case on resistance ( $R_{ON}$ ) occurs for VHC at 4.5V. Thus the 4.5V values should be used when designing with this supply. Worst case  $V_{IH}$  and  $V_{IL}$  occur at  $V_{CC} = 5.5V$  and 4.5V respectively. (The  $V_{IH}$  value at 5.5V is 3.85V.) The worst case leakage current occurs for CMOS at the higher voltage and so the 5.5V values should be used.

**Note 6:** At supply voltages ( $V_{CC} - GND$ ) approaching 2V the analog switch on resistance becomes extremely non-linear. Therefore it is recommended that these devices be used to transmit digital only when using these supply voltages.

AC Electrical Characteristics							
V <sub>CC</sub> = 2.0V–6.0V V <sub>EE</sub> = 0V–12V, C <sub>L</sub> = 50 pF (unless otherwise specified)							
Symbol	Parameter	Conditions	V <sub>CC</sub>	T <sub>A</sub> = 25°C		T <sub>A</sub> = -40 to 85°C	Units
				Typ	Guaranteed Limits		
t <sub>PHL</sub> , t <sub>PLH</sub>	Maximum Propagation Delay Switch In to Out		3.3V	25	30	20	ns
			4.5V	5	10	13	ns
			9.0V	4	8	10	ns
			12.0V	3	7	11	ns
t <sub>PZL</sub> , t <sub>PZH</sub>	Maximum Switch Turn "ON" Delay	R <sub>L</sub> = 1 kΩ	3.3V	30	58	73	ns
			4.5V	12	20	25	ns
			9.0V	6	12	15	ns
			12.0V	5	10	13	ns
t <sub>PHZ</sub> , t <sub>PLZ</sub>	Maximum Switch Turn "OFF" Delay	R <sub>L</sub> = 1 kΩ	3.3V	60	100	125	ns
			4.5V	25	36	45	ns
			9.0V	20	32	40	ns
			12.0V	15	30	38	ns
	Minimum Frequency Response (Figure 7)	R <sub>L</sub> = 600Ω V <sub>IS</sub> = 2 V <sub>PP</sub> at (V <sub>CC</sub> /2) (Note 7)(Note 8)	4.5V	40			MHz
			9.0V	100			MHz
	Crosstalk Between any Two Switches (Figure 8)	R <sub>L</sub> = 600Ω, F = 1 MHz (Note 8)(Note 9)	4.5V	-52			dB
			9.0V	-50			dB
	Peak Control to Switch Feedthrough Noise (Figure 9)	R <sub>L</sub> = 600Ω, F = 1 MHz C <sub>L</sub> = 50 pF	4.5V	100			mV
			9.0V	250			mV
	Switch OFF Signal Feedthrough Isolation (Figure 10)	R <sub>L</sub> = 600Ω, F = 1 MHz V <sub>(CT)</sub> V <sub>IL</sub> (Note 8)(Note 9)	4.5V	-42			dB
			9.0V	-44			dB
THD	Total Harmonic Distortion (Figure 11)	R <sub>L</sub> = 10 kΩ, C <sub>L</sub> = 50 pF, F = 1 kHz V <sub>IS</sub> = 4 V <sub>PP</sub> V <sub>IS</sub> = 8 V <sub>PP</sub>	4.5V	.013			%
			9.0V	.008			%
C <sub>IN</sub>	Maximum Control Input Capacitance			5	10	10	pF
C <sub>IN</sub>	Maximum Switch Input Capacitance			20			pF
C <sub>IN</sub>	Maximum Feedthrough Capacitance	V <sub>CTL</sub> = GND		0.5			pF
C <sub>PD</sub>	Power Dissipation Capacitance			15			pF

**Note 7:** Adjust 0 dBm for F = 1 kHz (Null R<sub>L</sub>/R<sub>ON</sub> Attenuation).

**Note 8:** V<sub>IS</sub> is centered at V<sub>CC</sub>/2.

**Note 9:** Adjust input for 0 dBm.

74VHC4066

**AC Test Circuits and Switching Time Waveforms**

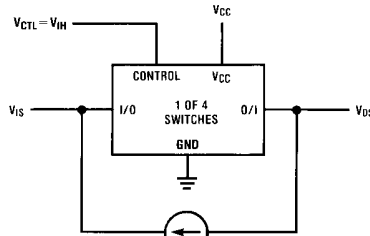


FIGURE 1. "ON" Resistance

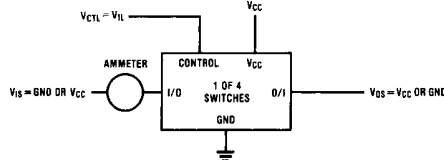


FIGURE 2. "OFF" Channel Leakage Current

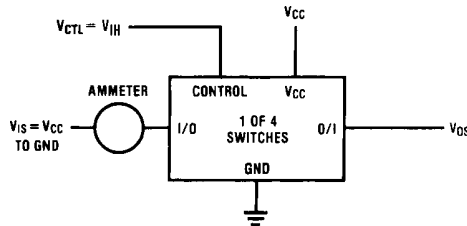


FIGURE 3. "ON" Channel Leakage Current

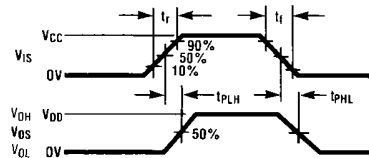
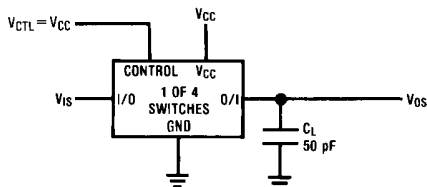


FIGURE 4.  $t_{PHL}$ ,  $t_{PLH}$  Propagation Delay Time Signal Input to Signal Output

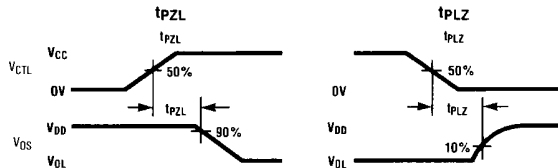
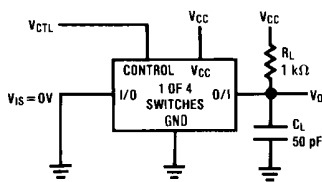


FIGURE 5.  $t_{PZL}$ ,  $t_{PLZ}$  Propagation Delay Time Control to Signal Output

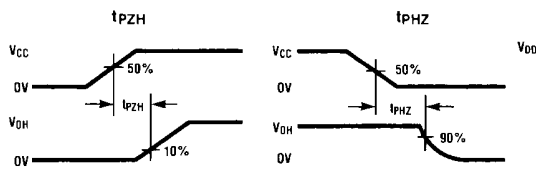
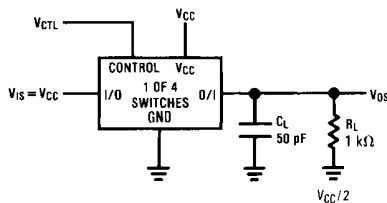


FIGURE 6.  $t_{PZH}$ ,  $t_{PHZ}$  Propagation Delay Time Control to Signal Output

**AC Test Circuits and Switching Time Waveforms (Continued)**

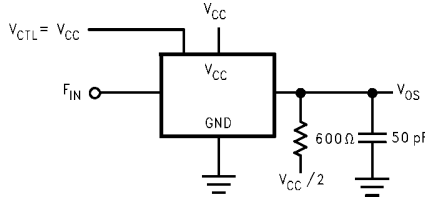


FIGURE 7. Frequency Response

**Crosstalk and Distortion Test Circuits**

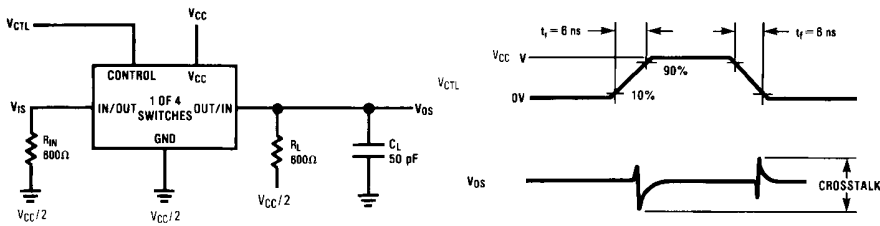


FIGURE 8. Crosstalk: Control Input to Signal Output

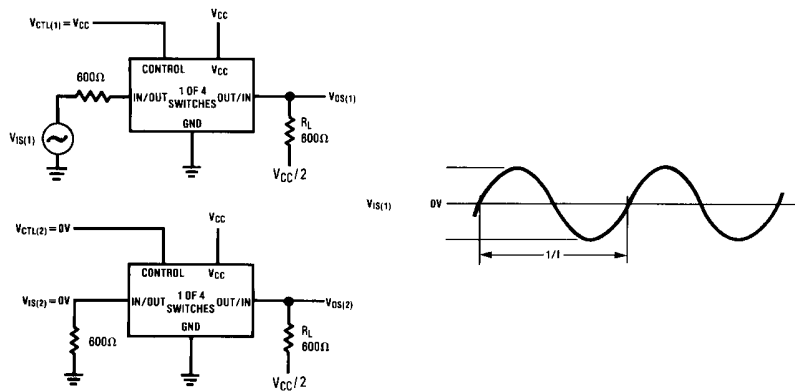
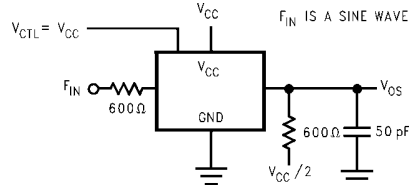


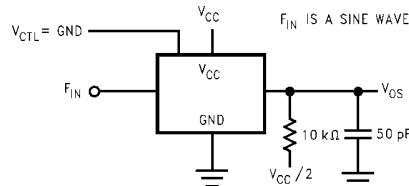
FIGURE 9. Crosstalk Between Any Two Switches

74VHC4066

**Crosstalk and Distortion Test Circuits (Continued)**

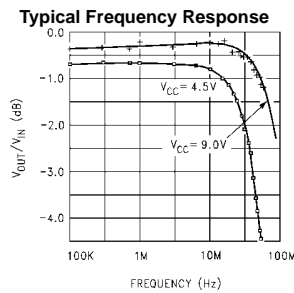
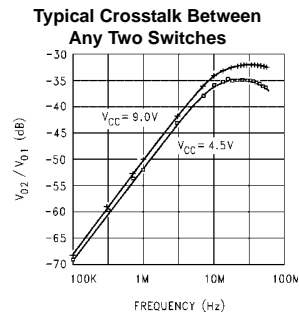
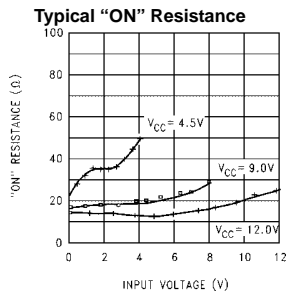


**FIGURE 10. Switch OFF Signal Feedthrough Isolation**



**FIGURE 11. Sinewave Distortion**

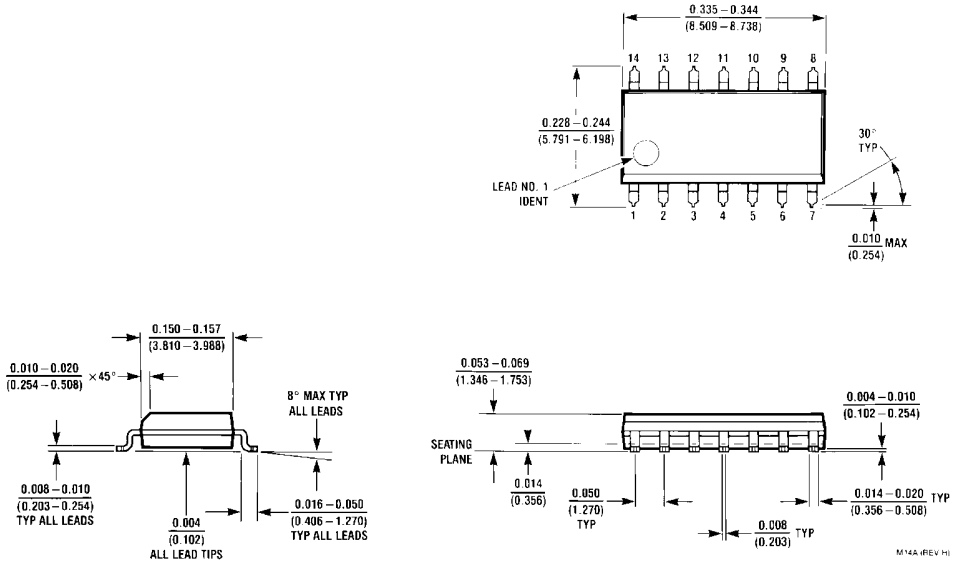
**Typical Performance Characteristics**



**Special Considerations**

In certain applications the external load-resistor current may include both  $V_{CC}$  and signal line components. To avoid drawing  $V_{CC}$  current when switch current flows into the analog switch input pins, the voltage drop across the switch must not exceed 0.6V (calculated from the ON Resistance).

**Physical Dimensions** inches (millimeters) unless otherwise noted



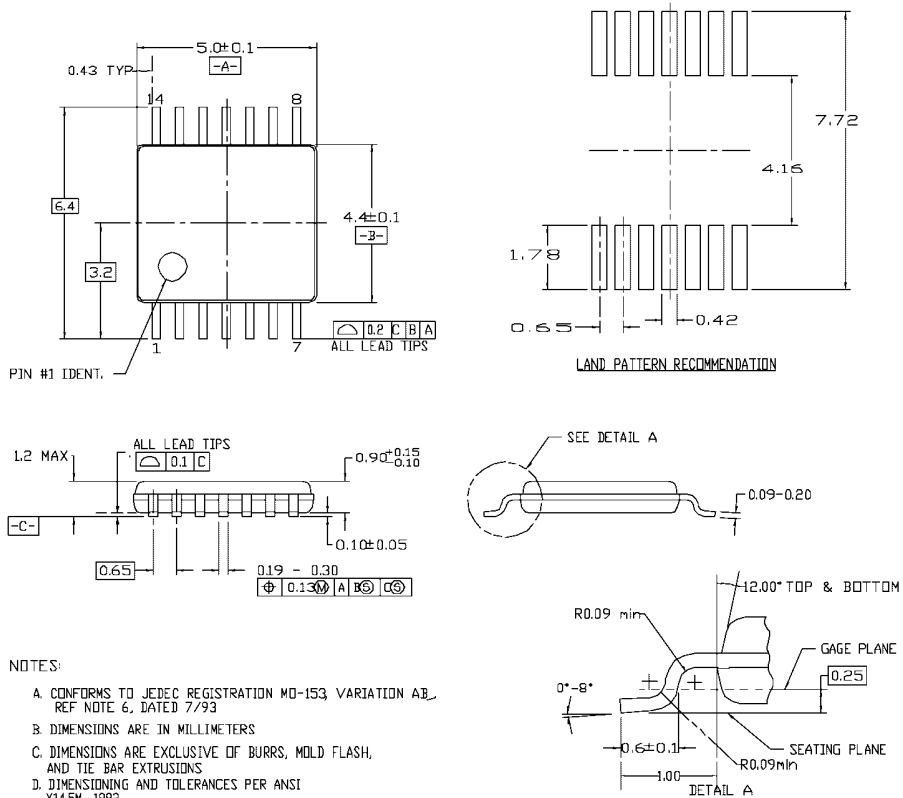
14-Lead Small Outline Integrated Circuit (SOIC), JEDEC MS-012, 0.150" Narrow  
 Package Number M14A

M14A (REV HI)



74VHC4066

**Physical Dimensions** inches (millimeters) unless otherwise noted (Continued)

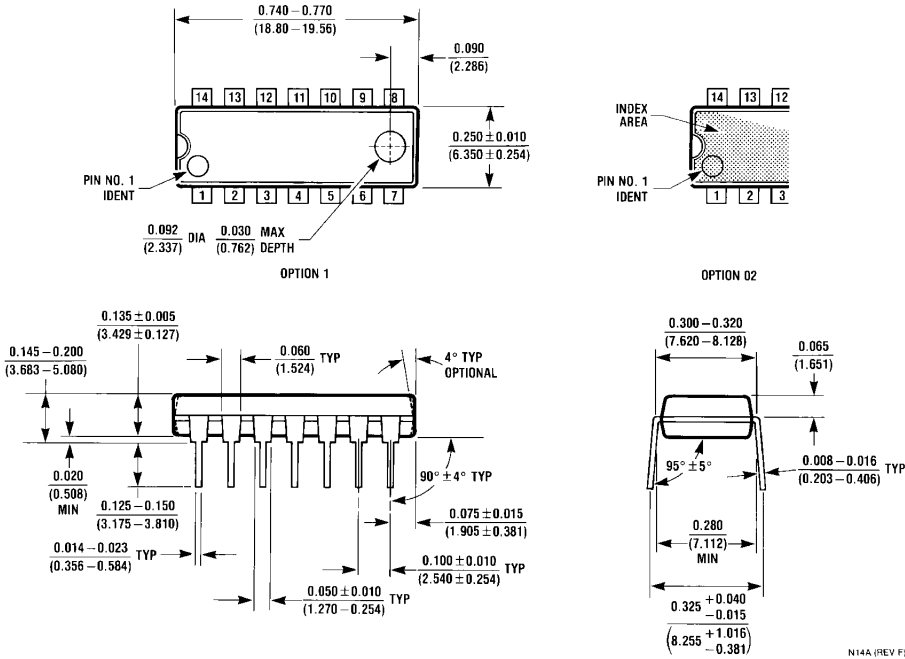


- NOTES:
- A. CONFORMS TO JEDEC REGISTRATION MO-153, VARIATION AB, REF NOTE 6, DATED 7/93
  - B. DIMENSIONS ARE IN MILLIMETERS
  - C. DIMENSIONS ARE EXCLUSIVE OF BURRS, MOLD FLASH, AND TIE BAR EXTRUSIONS
  - D. DIMENSIONING AND TOLERANCES PER ANSI Y14.5M, 1982

MTC14revD

**14-Lead Thin Shrink Small Outline Package (TSSOP), JEDEC MO-153, 4.4mm Wide Package Number MTC14**

**Physical Dimensions** inches (millimeters) unless otherwise noted (Continued)



Fairchild does not assume any responsibility for use of any circuitry described, no circuit patent licenses are implied and Fairchild reserves the right at any time without notice to change said circuitry and specifications.

**LIFE SUPPORT POLICY**

FAIRCHILD'S PRODUCTS ARE NOT AUTHORIZED FOR USE AS CRITICAL COMPONENTS IN LIFE SUPPORT DEVICES OR SYSTEMS WITHOUT THE EXPRESS WRITTEN APPROVAL OF THE PRESIDENT OF FAIRCHILD SEMICONDUCTOR CORPORATION. As used herein:

1. Life support devices or systems are devices or systems which, (a) are intended for surgical implant into the body, or (b) support or sustain life, and (c) whose failure to perform when properly used in accordance with instructions for use provided in the labeling, can be reasonably expected to result in a significant injury to the user.
2. A critical component in any component of a life support device or system whose failure to perform can be reasonably expected to cause the failure of the life support device or system, or to affect its safety or effectiveness.

[www.fairchildsemi.com](http://www.fairchildsemi.com)