

Excellent Integrated System Limited

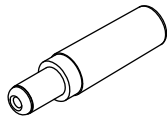
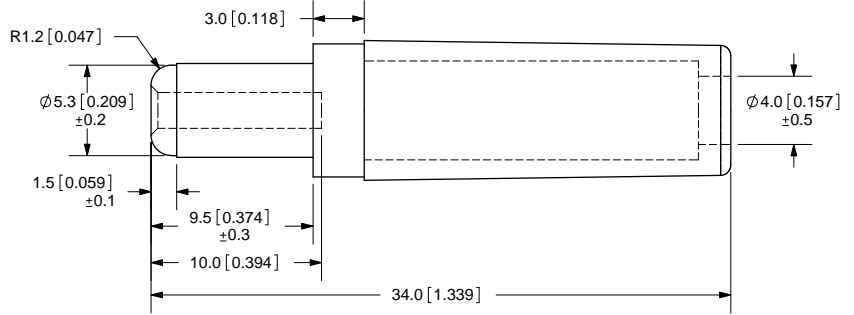
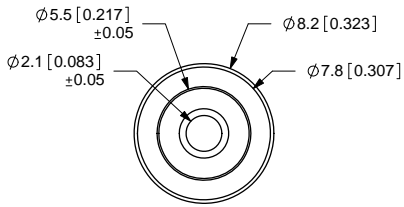
Stocking Distributor

Click to view price, real time Inventory, Delivery & Lifecycle Information:

[CUI Inc.](#)
[PP3-002A](#)

For any questions, you can email us directly:
sales@integrated-circuit.com

REV.	DESCRIPTION	DATE
A	NEW DRAWING	3/10/2006
B	Added tolerances	8/17/2006
C	Rating change	3/23/2007



SCALE 1:1

SPECIFICATIONS:
 RATING: 24V DC @ 5A
 OPERATING TEMP: 0° ~ +40°C

TOLERANCE:
 ±0.2mm UNLESS OTHERWISE
 SPECIFIED



20050 SW 112th Ave.
 Tualatin, OR 97062
 Phone: 503-612-2300
 800-275-4899
 Fax: 503-612-2383
 Website: www.cui.com

	MATERIAL	PLATING
BARREL	Brass	Nickel
INSULATOR	POM	Black Color
HOUSING	ABS	

TITLE: DC PLUG	REV: C
PART NO. PP3-002A	UNITS: MM [INCHES]
DRAWN BY: ZRJ	APPROVED BY:
	SCALE: 3:1

PC FILE NAME:
 PP3-002A

COPYRIGHT 2009 BY CUI INC.